

THIS MAP IS FOR THE PURPOSE OF AD VALOREM TAXATION ONLY.

Sec.16,17 & Fractional Sec.18,19,20,21, T.11N.,R.1E., S.B.B.&M.

Silver Valley Unified 0518 - 03

Par. 1 Tax Rate Area 109031



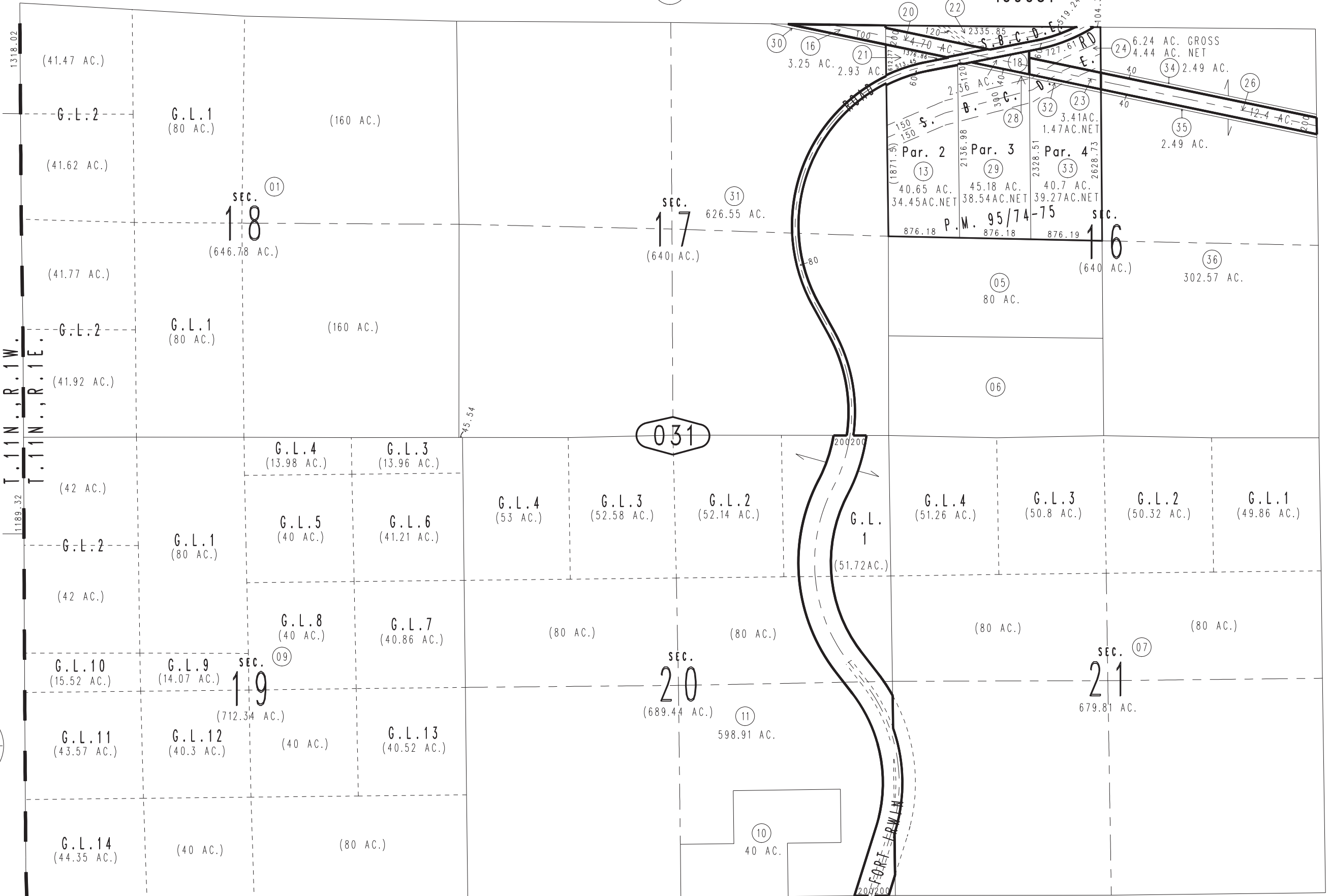
0423
03

0423
04

REVISED
04/08/09 GL
11/22/11 GW

June 2005

Parcel Map No. 8627, P.M. 95/74-75



1"=1200'

05

02

04

031

01

Par. 1
8.31 AC.

Par. 2
40.65 AC.
34.45 AC. NET

Par. 3
45.18 AC.
38.54 AC. NET

Par. 4
40.7 AC.
39.27 AC. NET

6.24 AC. GROSS
4.44 AC. NET

2.49 AC.

05
80 AC.

06
302.57 AC.

G.L. 4
(51.26 AC.)

G.L. 3
(50.8 AC.)

G.L. 2
(50.32 AC.)

G.L. 1
(49.86 AC.)

(80 AC.)

(80 AC.)

SEC. 20
(689.44 AC.)

011
598.91 AC.

SEC. 07
679.81 AC.

010
40 AC.

1318.02

T.11N., R.1W.
T.11N., R.1E.

1189.32

741.84

(41.47 AC.)

(41.62 AC.)

(41.77 AC.)

(41.92 AC.)

(42 AC.)

(42 AC.)

G.L. 10
(15.52 AC.)

G.L. 11
(43.57 AC.)

G.L. 14
(44.35 AC.)

G.L. 1
(80 AC.)

G.L. 1
(80 AC.)

G.L. 1
(80 AC.)

G.L. 9
(14.07 AC.)

G.L. 12
(40.3 AC.)

(40 AC.)

SEC. 18
(646.78 AC.)

SEC. 09
(712.34 AC.)

G.L. 4
(13.98 AC.)

G.L. 3
(13.96 AC.)

G.L. 5
(40 AC.)

G.L. 6
(41.21 AC.)

G.L. 8
(40 AC.)

G.L. 7
(40.86 AC.)

(40 AC.)

G.L. 13
(40.52 AC.)

(80 AC.)

SEC. 17
(640 AC.)

G.L. 4
(53 AC.)

G.L. 3
(52.58 AC.)

G.L. 2
(52.14 AC.)

(80 AC.)

(80 AC.)

(689.44 AC.)

598.91 AC.

3.25 AC.

2.93 AC.

4.70 AC.

2.36 AC.

3.41 AC.

1.47 AC. NET

40.65 AC.

45.18 AC.

34.45 AC. NET

38.54 AC. NET

876.18

876.18

876.19

876.19

876.18

876.18

876.19

876.19

876.18

876.18

876.19

876.19

876.18

876.18

876.19

876.19

876.18

876.18

876.19

876.19

876.18

876.18

876.19

876.19

876.18

876.18

876.19

876.19

876.18

876.18

876.19

876.19

876.18

876.18

876.19

876.19

876.18

876.18

876.19

876.19

876.18

876.18

876.19

876.19

876.18

876.18

876.19

876.19

120

2335.85

104.37

150

150

150

150

150

150

150

150

150

150

150

150

150

150

150

150

150

150

150

150

150

150

150

150

150

150

150

150

150

150

150

150

150

150

150

150

150

150

150

150

150

150

150

150

150

150

150

150

150

150

150

150

150

150

150

150

120

120

120

120

120

120

120

120

120

120

120

120

120

120

120

120

120

120

120

120

120

120

120

120

120

120

120

120

120

120

120

120

120

120

120

120

120

120

120

120

120

120

120

120

120

120

120

120

120

120

120

120

120

120

120

120

120

120

120

120

120

120

120

120

120

120

120

120

120

120

120

120

120

120

120

120

120

120

120

120

120

120

120

120

120

120

120

120

120

120

120

120

120

120

120

120

120

120

120

120

120

120

120

120

120

120

120

120

120

120

120

120

120

120

120

120

120

120

120

120

120

120

120