

THIS MAP IS FOR THE PURPOSE OF AD VALOREM TAXATION ONLY.



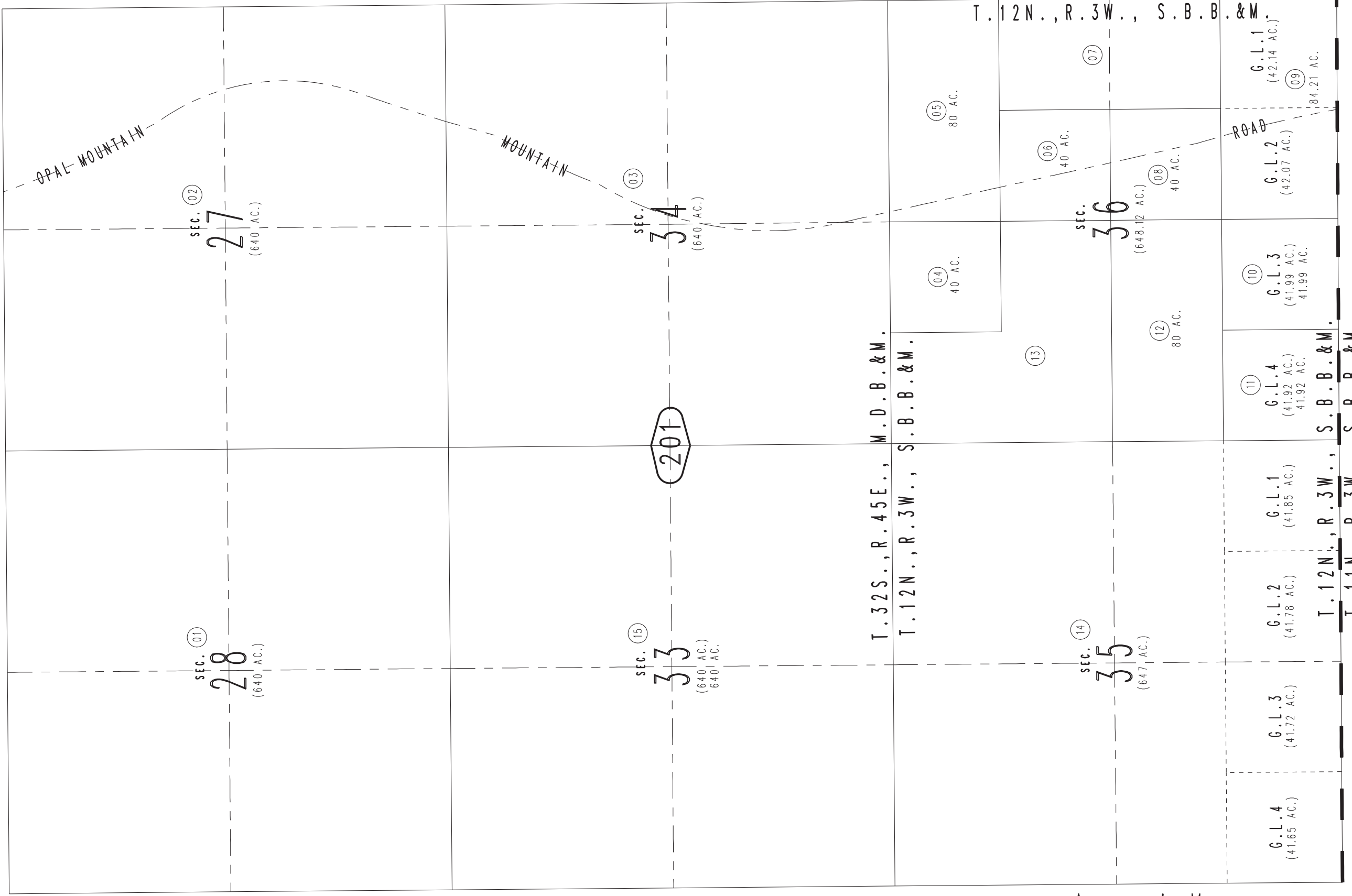
Sec.27,28,33,34, T.32S.,R.45E., M.D.B.&M.  
Fractional Sec.35,36, T.12N.,R.3W., S.B.B.&M.

Barstow Unified  
Tax Rate Area  
56014

0500-20



18



T.12N.,R.2W., S.B.B.&M.  
T.12N.,R.3W., S.B.B.&M.

T.32S.,R.45E., M.D.B.&M.  
T.12N.,R.3W., S.B.B.&M.

G.L.1  
(42.14 AC.)

G.L.2  
(42.07 AC.)

G.L.3  
(41.99 AC.)

G.L.4  
(41.92 AC.)

G.L.1  
(41.85 AC.)

G.L.2  
(41.78 AC.)

G.L.3  
(41.72 AC.)

G.L.4  
(41.65 AC.)

T.12N.,R.3W., S.B.B.&M.  
T.11N.,R.3W., S.B.B.&M.

201

0489  
15

22

21