

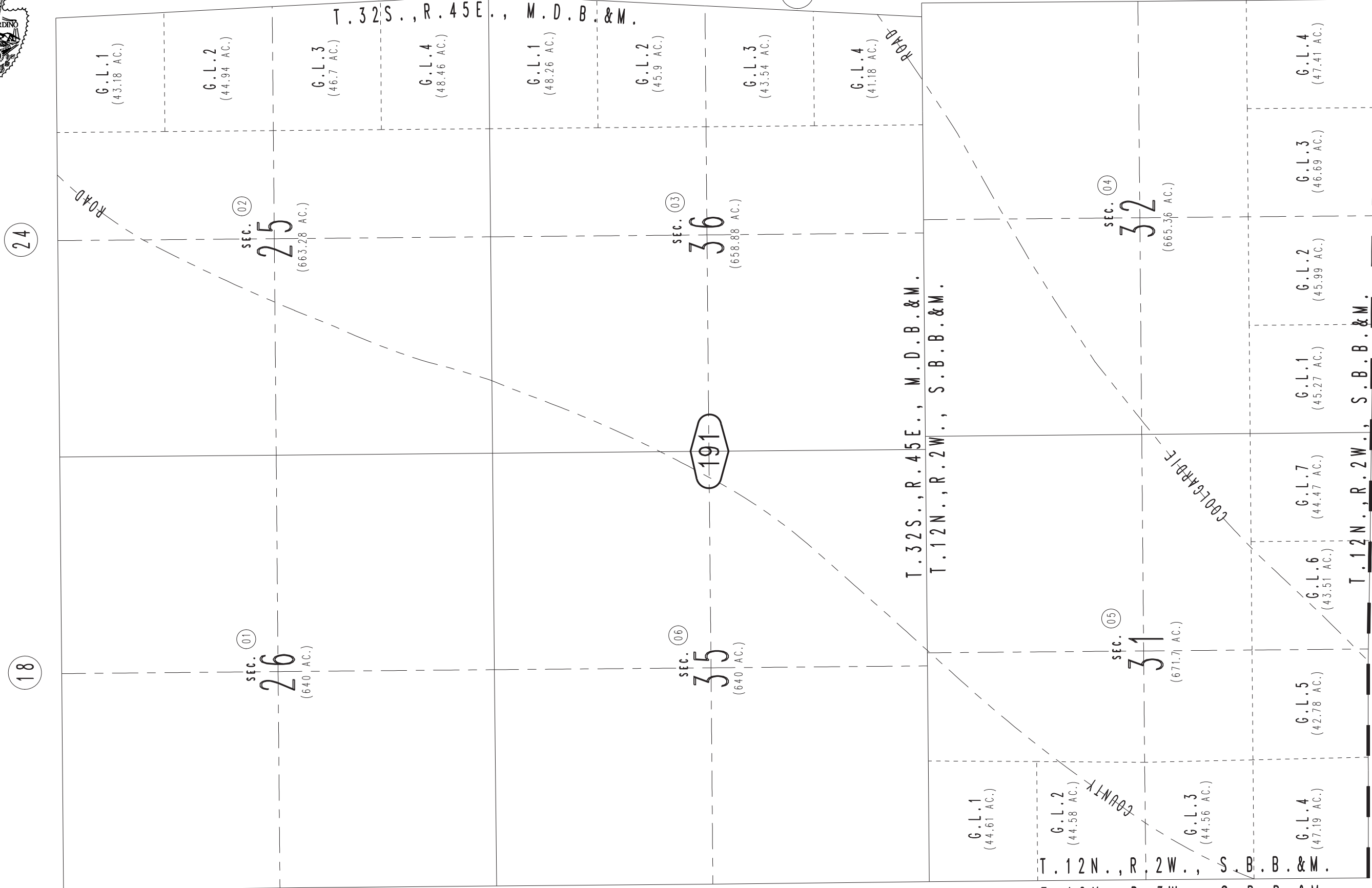
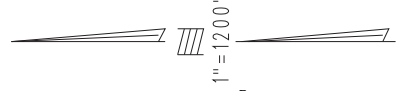
THIS MAP IS FOR THE PURPOSE  
OF AD VALOREM TAXATION ONLY.



Fractional Sec.25,36, & Sec.26,35, T.32S.,R.45E., M.D.B.&M.  
Fractional Sec.31,32, T.12N.,R.2W., S.B.B.&M.  
T.32S.,R.46E., M.D.B.&M.  
T.32S.,R.45E., M.D.B.&M.

Barstow Unified  
Tax Rate Area  
56014

0500-19



24

18

SEC. 02

25

(663.28 AC.)

SEC. 01

26

(640 AC.)

SEC. 03

36

(658.88 AC.)

SEC. 06

35

(640 AC.)

191

14

SEC. 04

32

(665.36 AC.)

SEC. 05

31

(671.71 AC.)

G.L.1  
(43.18 AC.)

G.L.2  
(44.94 AC.)

G.L.3  
(46.7 AC.)

G.L.4  
(48.46 AC.)

G.L.1  
(48.26 AC.)

G.L.2  
(45.9 AC.)

G.L.3  
(43.54 AC.)

G.L.4  
(41.18 AC.)

G.L.1  
(44.61 AC.)

G.L.2  
(44.58 AC.)

G.L.3  
(44.56 AC.)

G.L.4  
(47.19 AC.)

G.L.5  
(42.78 AC.)

G.L.6  
(43.51 AC.)

G.L.7  
(44.47 AC.)

G.L.1  
(45.27 AC.)

G.L.2  
(45.99 AC.)

G.L.3  
(46.69 AC.)

G.L.4  
(47.41 AC.)

T.12N., R.2W., S.B.B.&M.  
T.11N., R.2W., S.B.B.&M.

T.32S., R.45E., M.D.B.&M.  
T.12N., R.2W., S.B.B.&M.

T.12N., R.3W., S.B.B.&M.

0489  
02