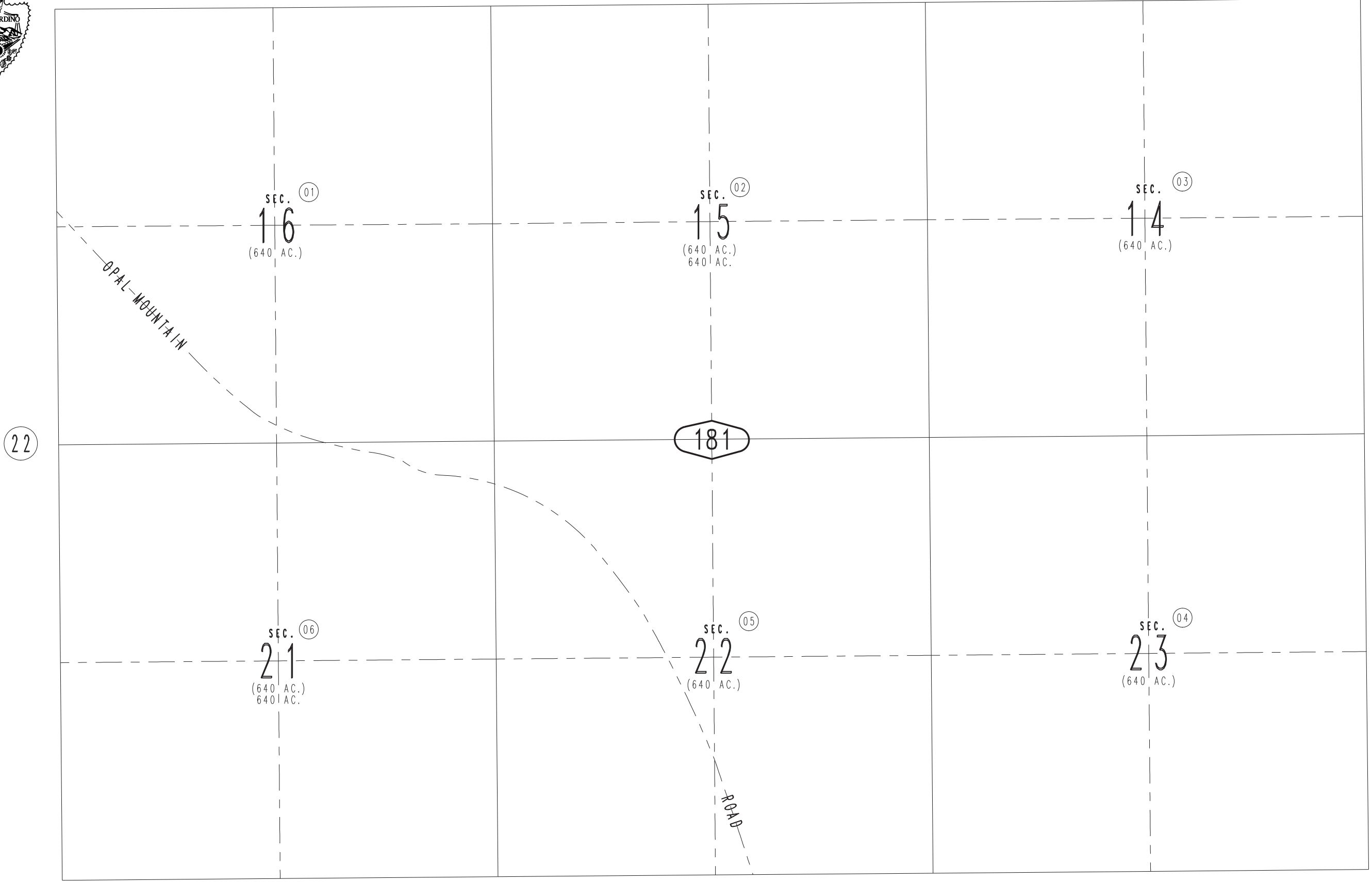
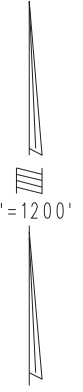


THIS MAP IS FOR THE PURPOSE
OF AD VALOREM TAXATION ONLY.

Sec.14,15,16,21,22,23, T.32S.,R.45E., M.D.B.&M.

Barstow Unified
Tax Rate Area
56014

0500-18



22

24

20

19

Assessor's Map
Book 0500 Page 18
San Bernardino County

REVISED