

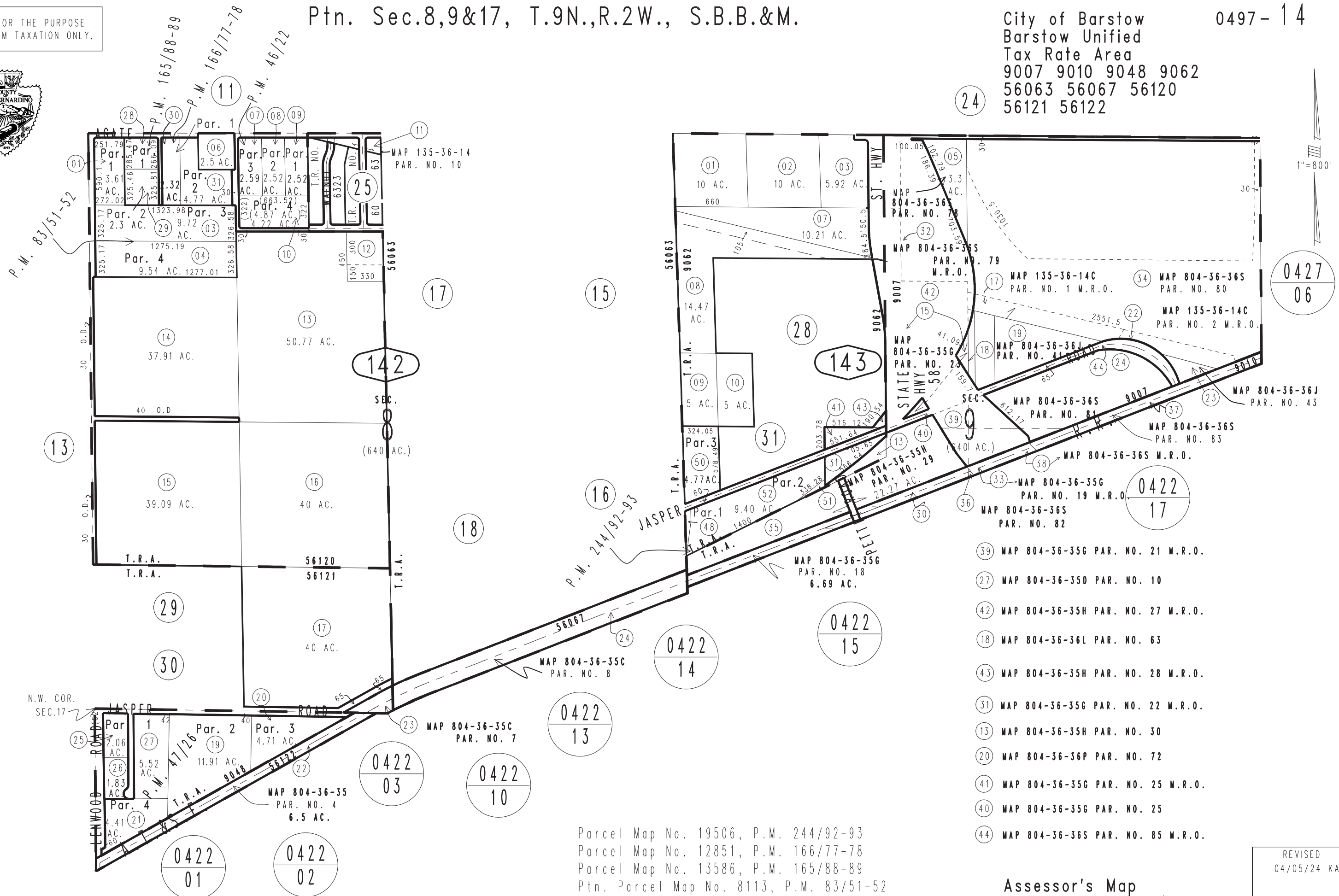
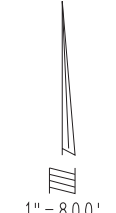
THIS MAP IS FOR THE PURPOSE OF AD VALOREM TAXATION ONLY.



Ptn. Sec.8,9&17, T.9N.,R.2W., S.B.B.&M.

City of Barstow
Barstow Unified
Tax Rate Area
9007 9010 9048 9062
56063 56067 56120
56121 56122

0497-14



0427
06

0422
17

0422
15

0422
14

0422
13

0422
10

0422
03

0422
01

0422
02

- 39 MAP 804-36-35G PAR. NO. 21 M.R.O.
- 27 MAP 804-36-35D PAR. NO. 10
- 42 MAP 804-36-35H PAR. NO. 27 M.R.O.
- 18 MAP 804-36-36L PAR. NO. 63
- 43 MAP 804-36-35H PAR. NO. 28 M.R.O.
- 31 MAP 804-36-35G PAR. NO. 22 M.R.O.
- 13 MAP 804-36-35H PAR. NO. 30
- 20 MAP 804-36-36P PAR. NO. 72
- 41 MAP 804-36-35G PAR. NO. 25 M.R.O.
- 40 MAP 804-36-35G PAR. NO. 25
- 44 MAP 804-36-36S PAR. NO. 85 M.R.O.

Parcel Map No. 19506, P.M. 244/92-93
 Parcel Map No. 12851, P.M. 166/77-78
 Parcel Map No. 13586, P.M. 165/88-89
 Ptn. Parcel Map No. 8113, P.M. 83/51-52
 Parcel Map No. 4889, P.M. 47/26
 Parcel Map No. 4888, P.M. 46/22

Assessor's Map
 Book 0497 Page 14
 San Bernardino County

REVISED
 04/05/24 KA