

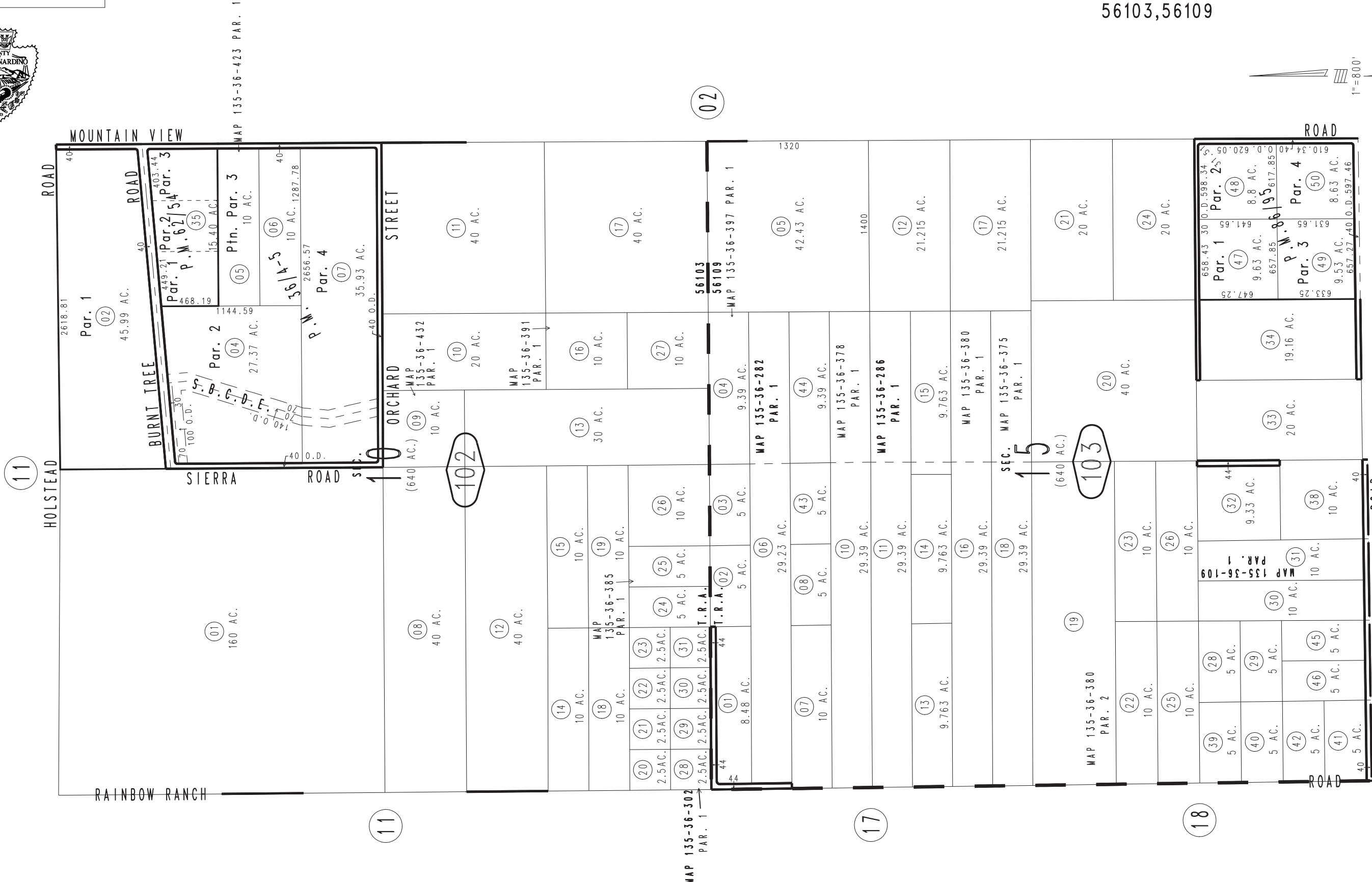
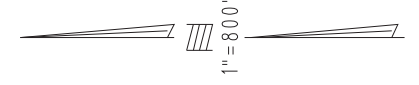
THIS MAP IS FOR THE PURPOSE OF AD VALOREM TAXATION ONLY.



Sec.10&15, T.10N.,R.3W., S.B.B.&M.

Barstow Unified Tax Rate Area 56103,56109

0495-10



June 2005

Parcel Map No. 8392, P.M. 86/95  
Parcel Map No. 6383, P.M. 62/54  
Ptn. Parcel Map No. 3780, P.M. 36/4-5

Assessor's Map  
Book 0495 Page 10  
San Bernardino County

REVISED  
01/08/19 GW  
12/05/19 GW