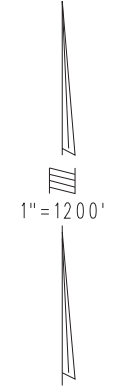


THIS MAP IS FOR THE PURPOSE
OF AD VALOREM TAXATION ONLY.

Sec.13,14,15,22,23,24, T.9N.,R.5W., S.B.B.&M.

Barstow Unified
Tax Rate Area
56053

0493-02



08

SEC. 15
(640 AC.)

SEC. 14
(640 AC.)

022

23

SEC. 22
(640 AC.)

SEC. 23
(640 AC.)

SEC. 24
(640 AC.)

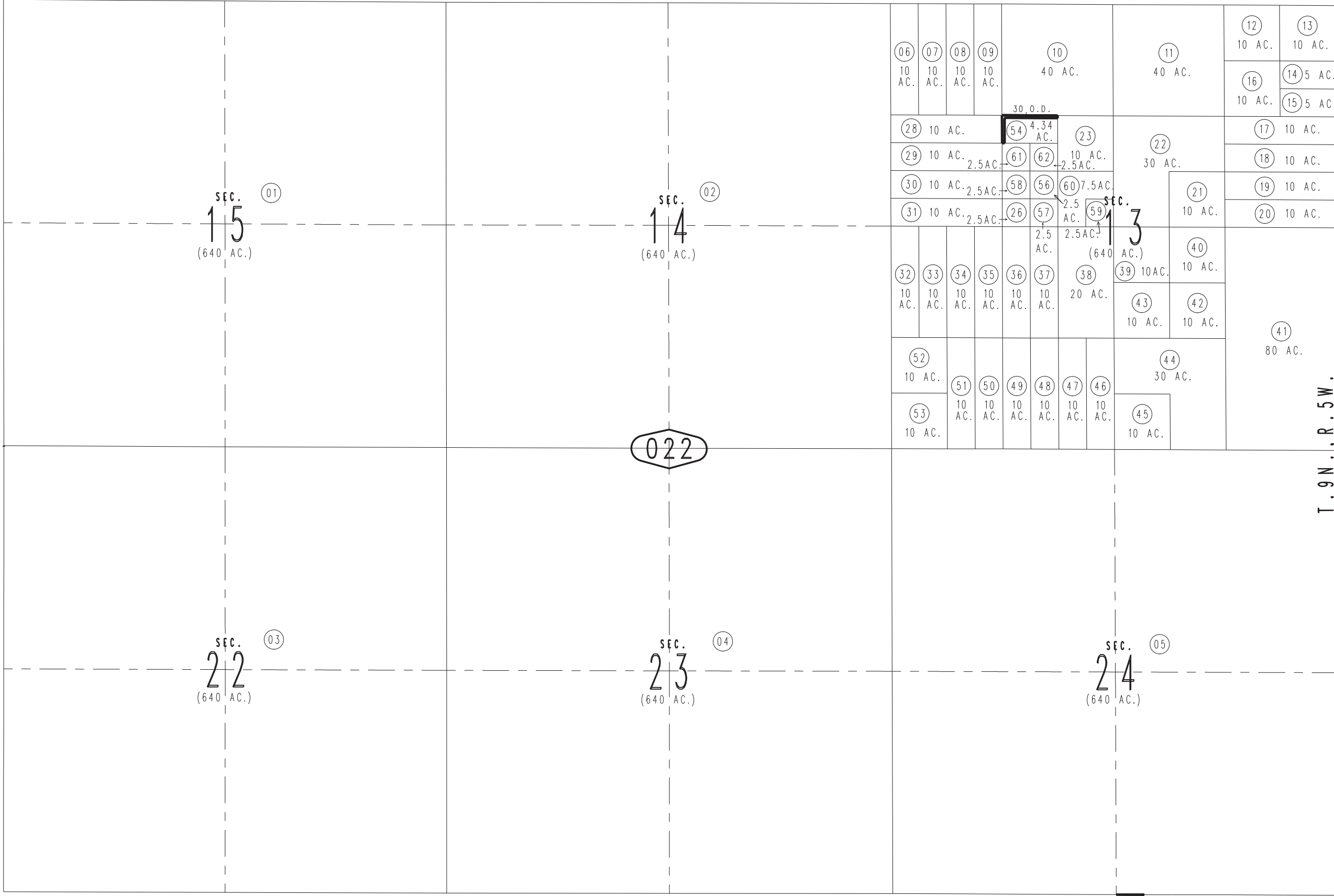
04

18

Assessor's Map
Book 0493 Page 02
San Bernardino County

0420
01

REVISED
01/25/11 RM-MC



01

02

04

01

03

05

06
10 AC.

07
10 AC.

08
10 AC.

09
10 AC.

10
40 AC.

11
40 AC.

12
10 AC.

13
10 AC.

16
10 AC.

14 5 AC.
15 5 AC.

17
10 AC.

18
10 AC.

19
10 AC.

20
10 AC.

28 10 AC.

54 4.34 AC.

23

22
30 AC.

29 10 AC.

61 2.5 AC.

62 2.5 AC.

30 10 AC.

58 2.5 AC.

56 60 7.5 AC.

21
10 AC.

31 10 AC.

26 2.5 AC.

57 2.5 AC.

59 2.5 AC.

32 10 AC.

33 10 AC.

34 10 AC.

35 10 AC.

36 10 AC.

37 10 AC.

41
80 AC.

52 10 AC.

44 30 AC.

53 10 AC.

51 10 AC.

50 10 AC.

49 10 AC.

48 10 AC.

47 10 AC.

40 10 AC.

39 10 AC.

43 10 AC.

42 10 AC.

45 10 AC.

T.9N., R.5W.
T.9N., R.4W.

30 D.D.

SEC. 13