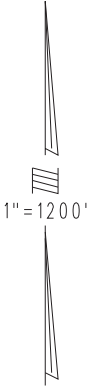
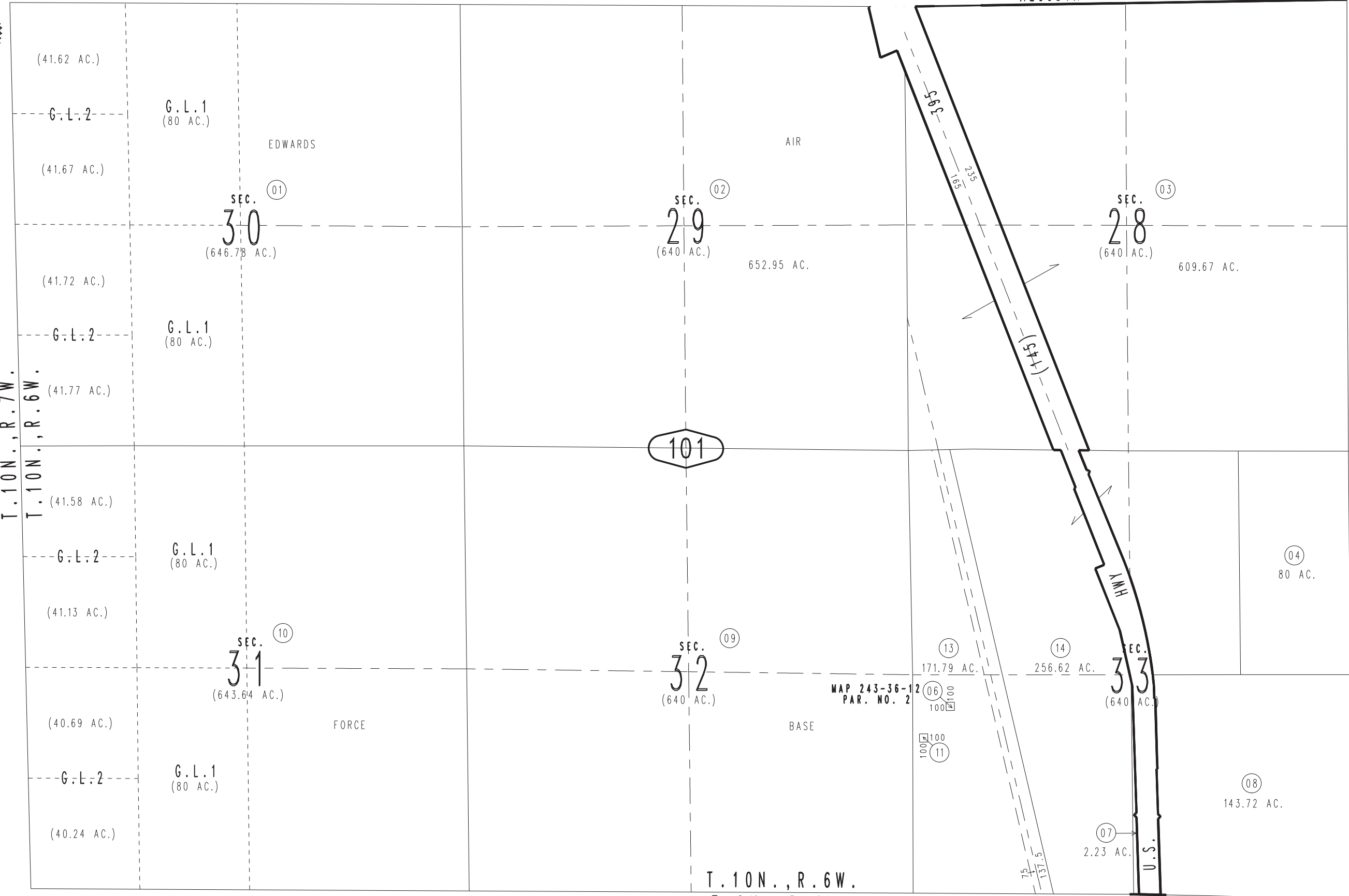


THIS MAP IS FOR THE PURPOSE OF AD VALOREM TAXATION ONLY.

Fractional Sec.30&31 & Sec.28,29,32&33, T.10N.,R.6W., S.B.B.&M.

Muroc Unified Tax Rate Area 47 93000

0492-10



T.10N., R.7W.  
T.10N., R.6W.

T.10N., R.6W.  
T.9N., R.6W.

MAP 243-36-12  
PAR. NO. 2

Assessor's Map  
Book 0492 Page 10  
San Bernardino County

REVISED  
03/30/15 RM  
07/21/16 KC