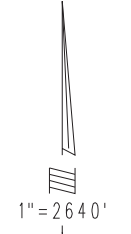
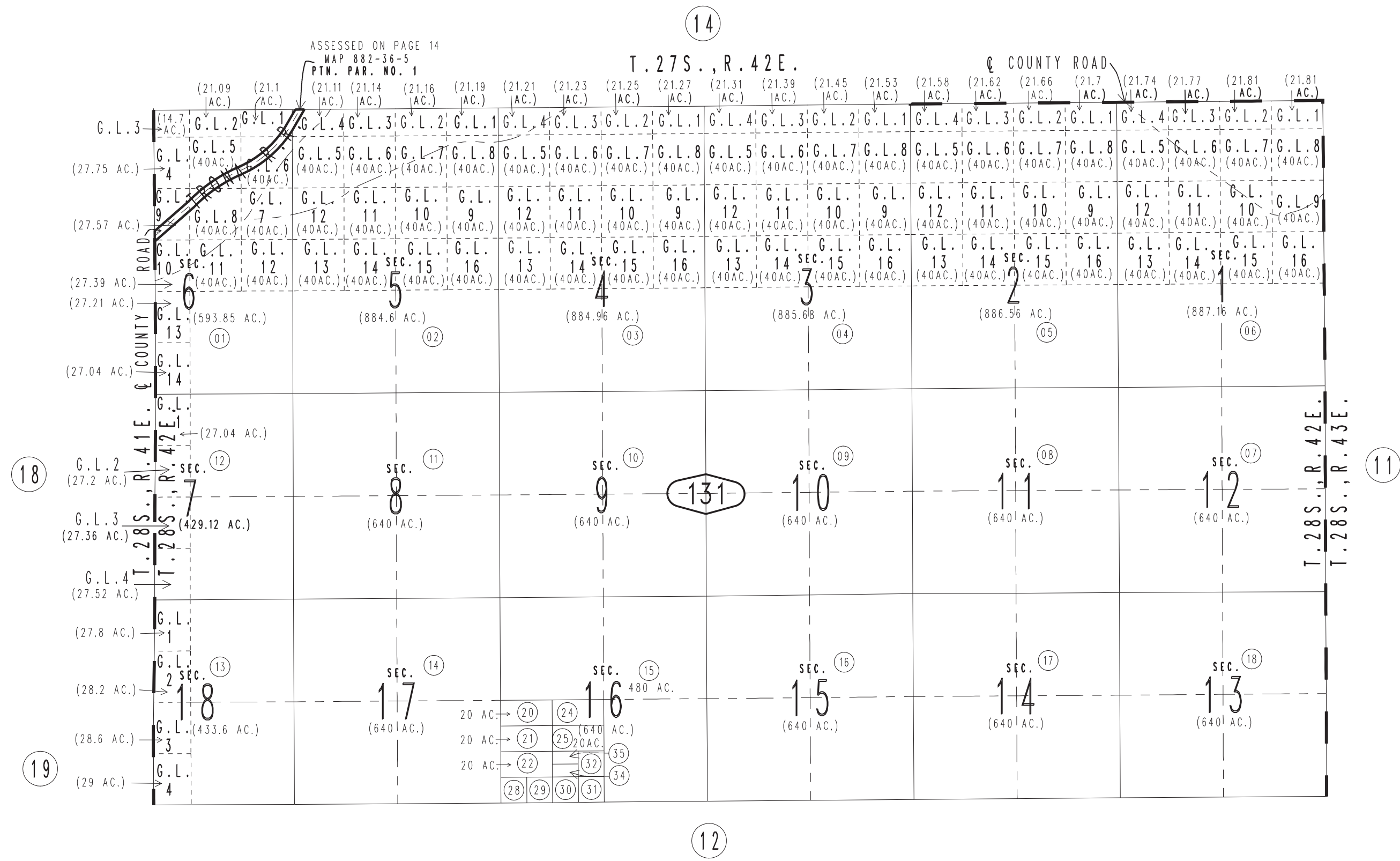


THIS MAP IS FOR THE PURPOSE OF AD VALOREM TAXATION ONLY.

Fractional Sec.1,2,3,4,5,6,7,18 & Sec.8to17, T.28S.,R.42E., M.D.B.&M. Trona Joint Unified Tax Rate Area 111005 0483-13



May 2005

Assessor's Map Book 0483 Page 13 San Bernardino County

REVISED