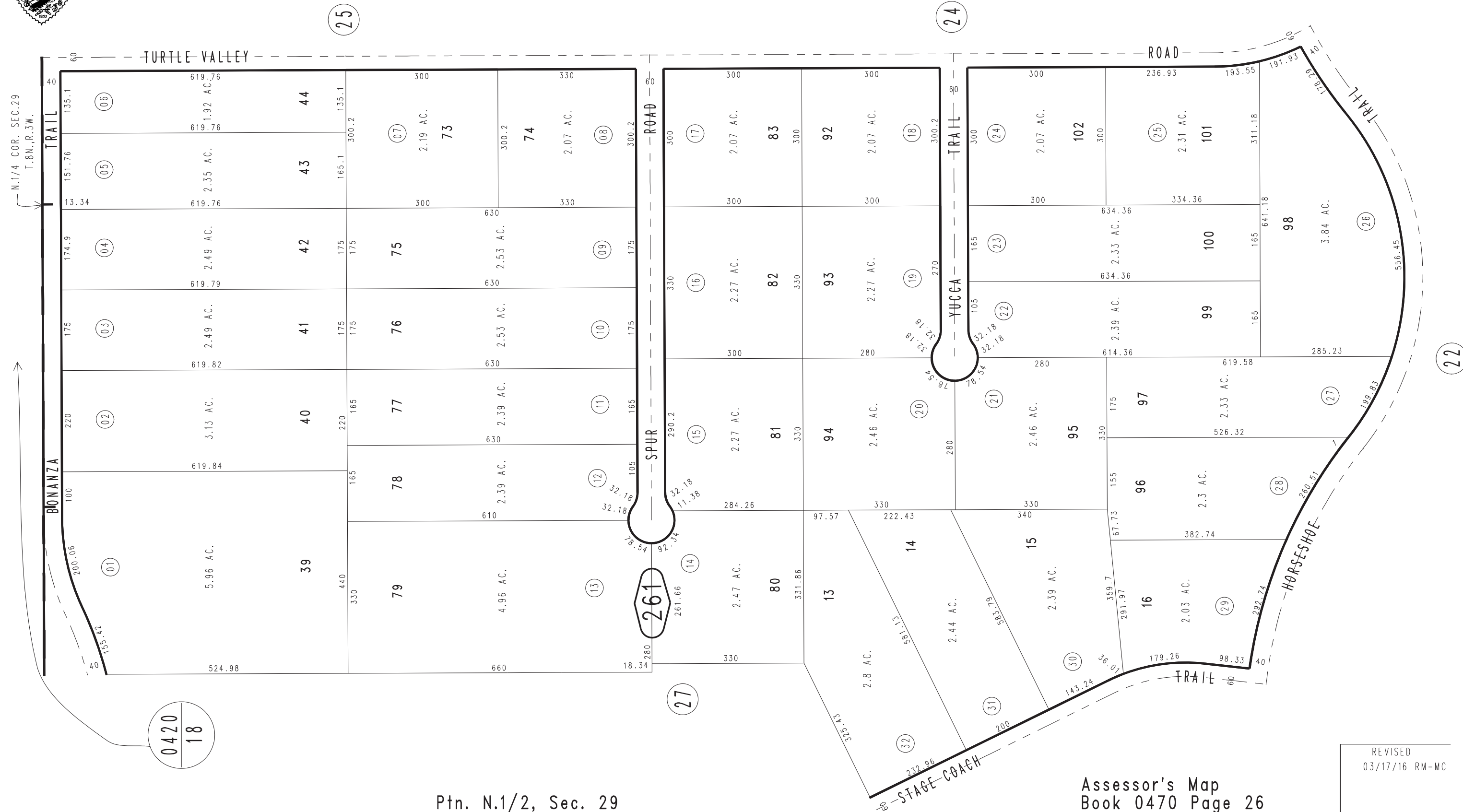


THIS MAP IS FOR THE PURPOSE
OF AD VALOREM TAXATION ONLY.

Ptn. Tract No. 5508, M.B. 72/63-67

Oro Grande
Tax Rate Area
99003

0470-26



February 2004

Ptn. N.1/2, Sec. 29
T.8N., R.3W.

Assessor's Map
Book 0470 Page 26
San Bernardino County

REVISED
03/17/16 RM-MC