

THIS MAP IS FOR THE PURPOSE OF AD VALOREM TAXATION ONLY.

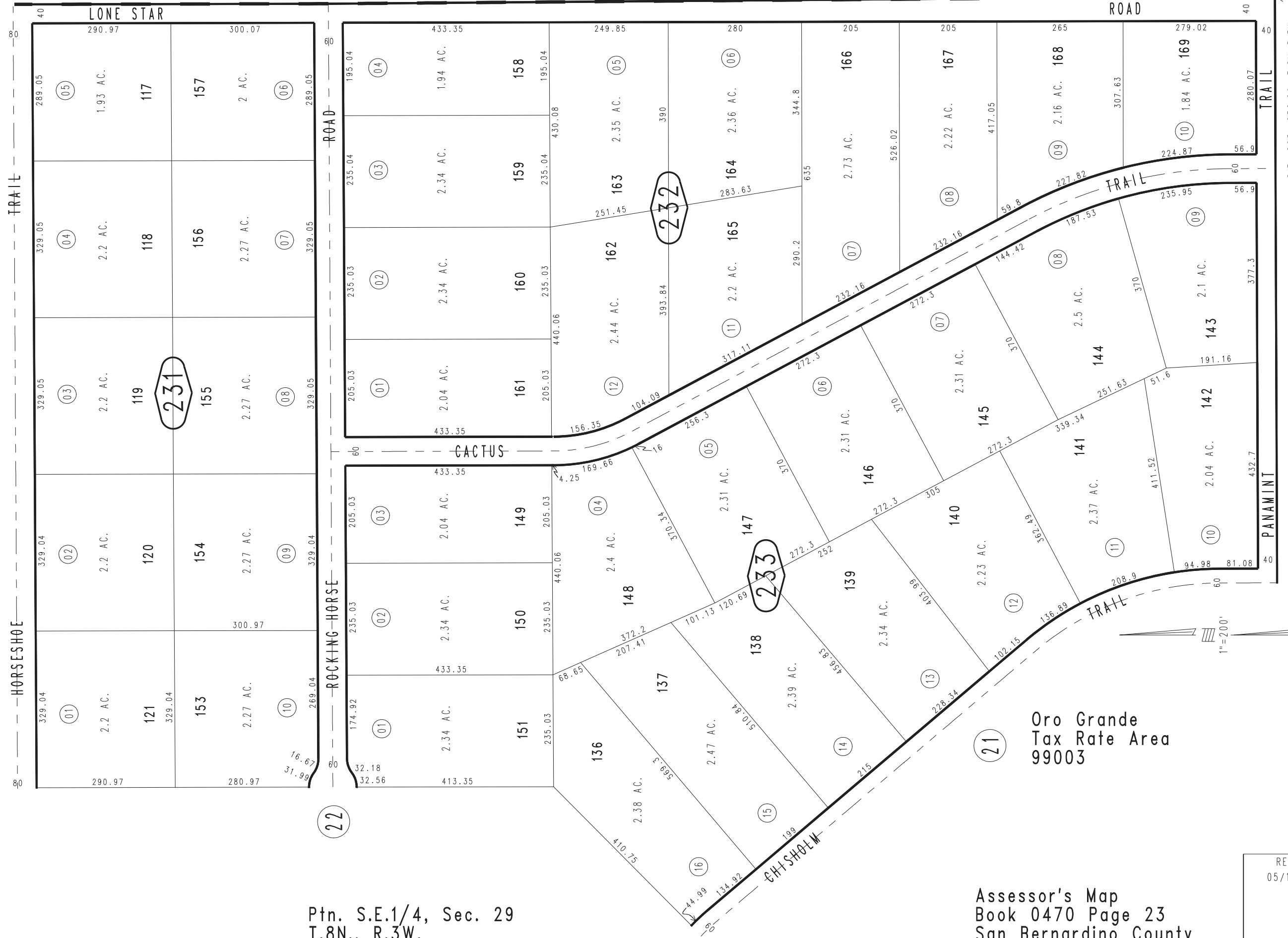
Ptn. Tract No. 5508, M.B. 72/63-67

0420
19



24

15



Ptn. S.E.1/4, Sec. 29
T.8N., R.3W.

Oro Grande
Tax Rate Area
99003

Assessor's Map
Book 0470 Page 23
San Bernardino County

REVISED
05/14/09 KC