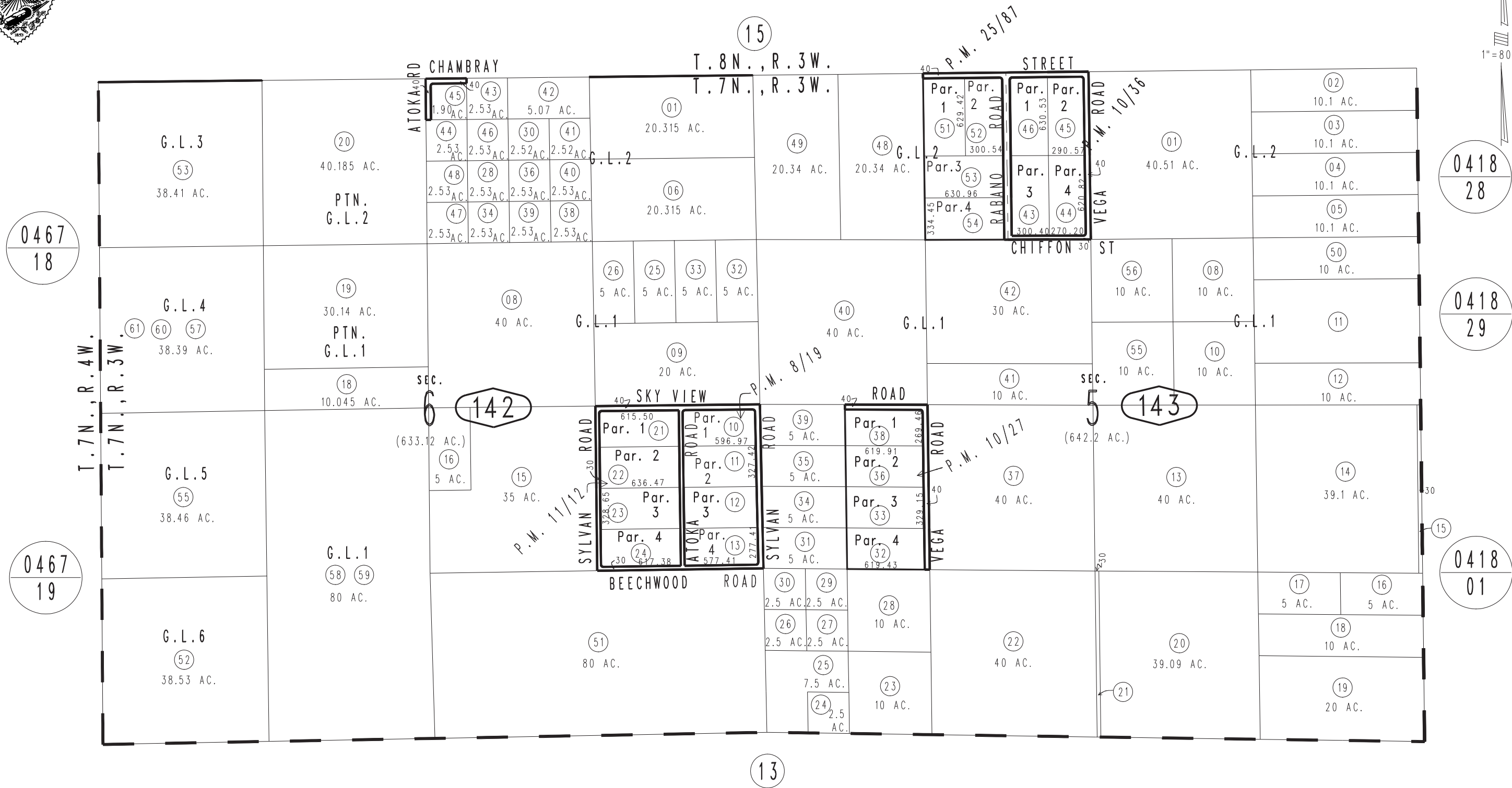


THIS MAP IS FOR THE PURPOSE OF AD VALOREM TAXATION ONLY.

Fractional Sec.5&6, T.7N.,R.3W., S.B.B.&M.

Oro Grande Tax Rate Area 99003

0470-14



Parcel Map No. 2908, P.M. 25/87
Parcel Map No. 881, P.M. 11/12
Parcel Map No. 1220, P.M. 10/36
Parcel Map No. 1219, P.M. 10/27
Parcel Map No. 868, P.M. 8/19

February 2004

Assessor's Map Book 0470 Page 14 San Bernardino County

REVISED 03/17/16 RM-MC