

THIS MAP IS FOR THE PURPOSE  
OF AD VALOREM TAXATION ONLY.

Sec.14 & 15, T.7N.,R.4W., S.B.B.&M.

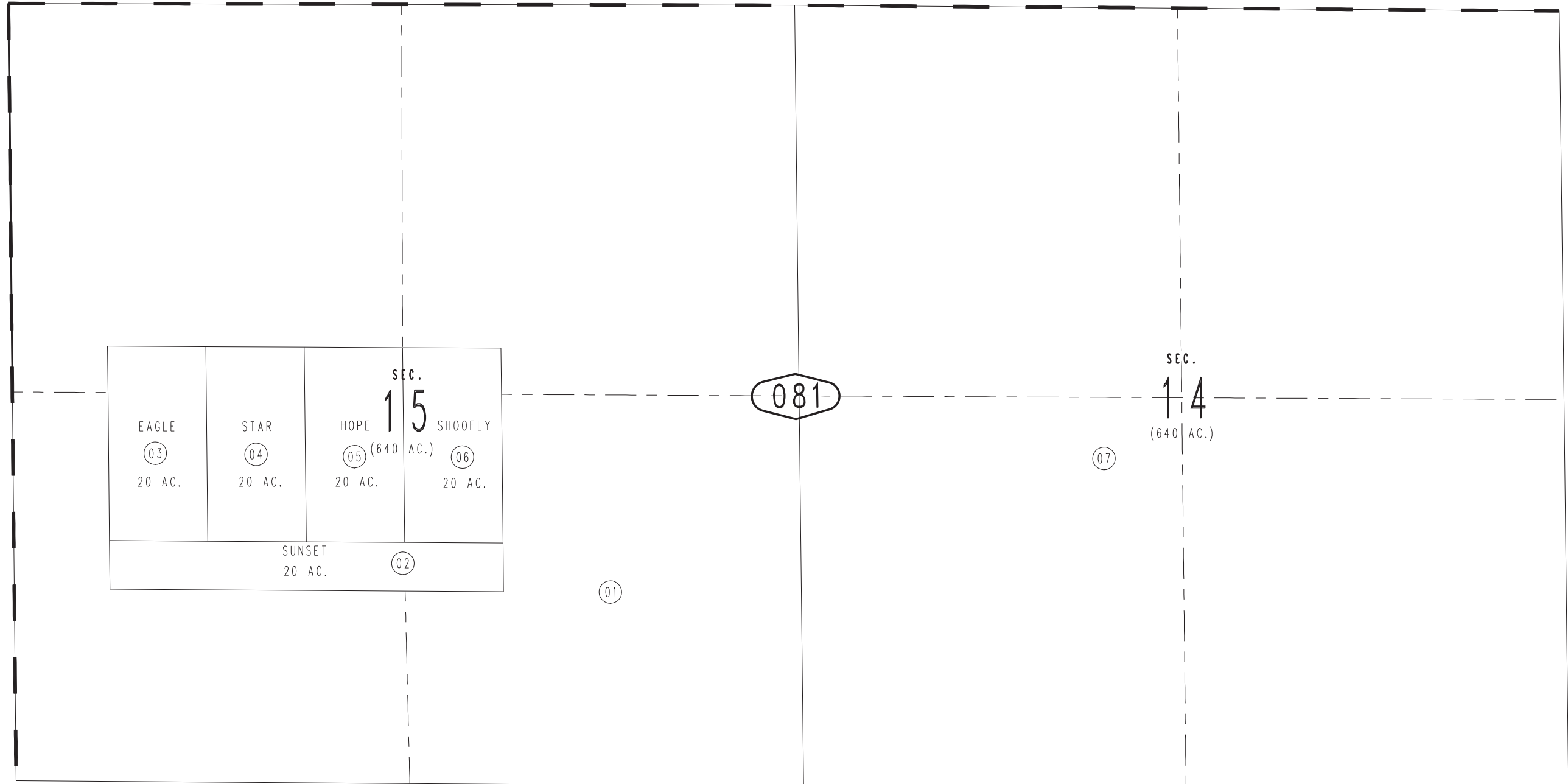
Oro Grande  
Tax Rate Area  
99003

0470-08



0467  
16

0467  
20



06

SEC. 15 (640 AC.)

EAGLE 03 20 AC.	STAR 04 20 AC.	HOPE 05 20 AC.	SHOOFLY 06 20 AC.
SUNSET 20 AC.			02

081

SEC. 14  
(640 AC.)

10

01

07

09