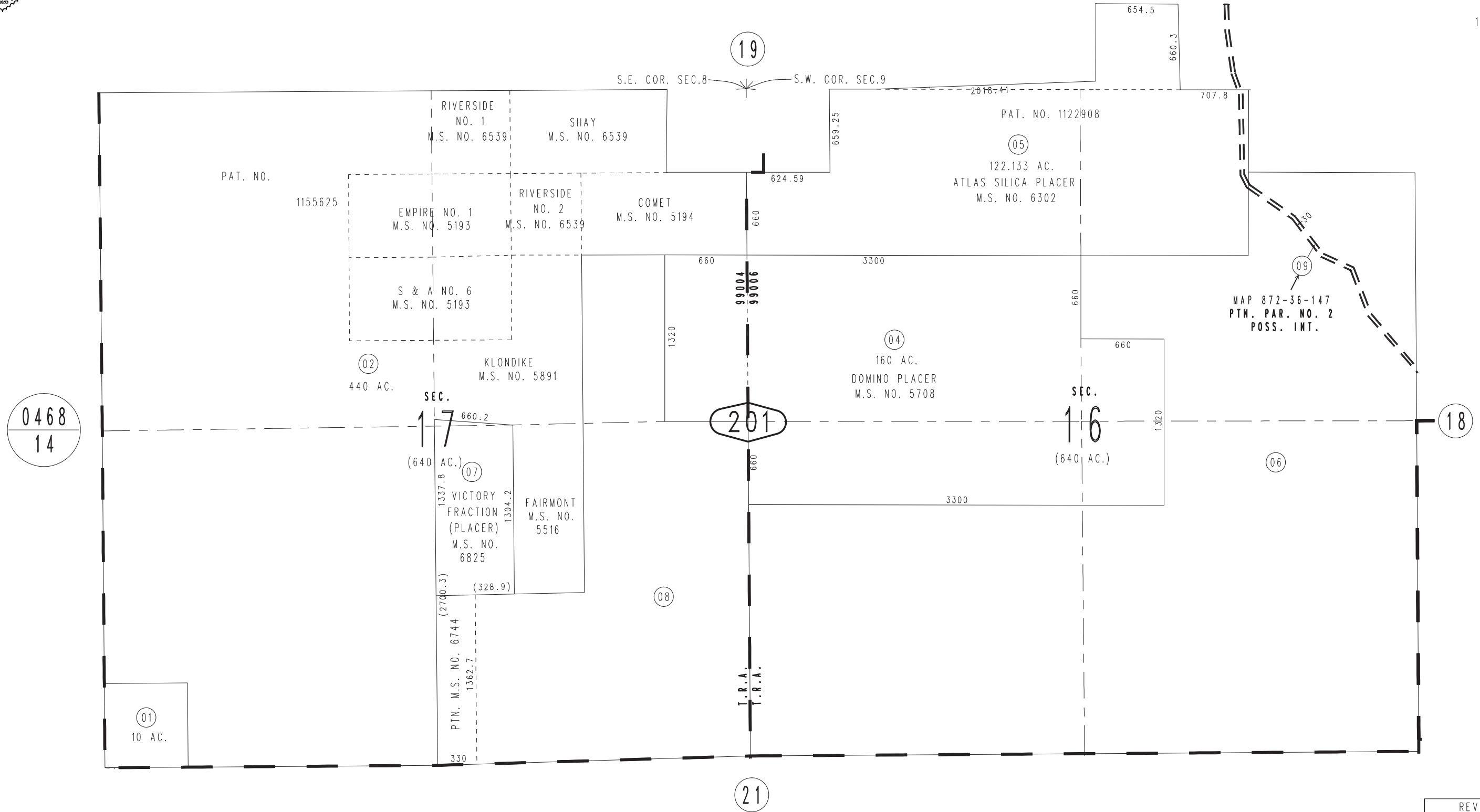


THIS MAP IS FOR THE PURPOSE OF AD VALOREM TAXATION ONLY.

Ptn. Sec.9,16&17, T.6N.,R.4W., S.B.B.&M.

Oro Grande
Tax Rate Area
99004 99006

0469-20



MAP 872-36-147
PTN. PAR. NO. 2
POSS. INT.

REVISED
10/30/15 KC-MC

Assessor's Map
Book 0469 Page 20
San Bernardino County