

THIS MAP IS FOR THE PURPOSE
OF AD VALOREM TAXATION ONLY.

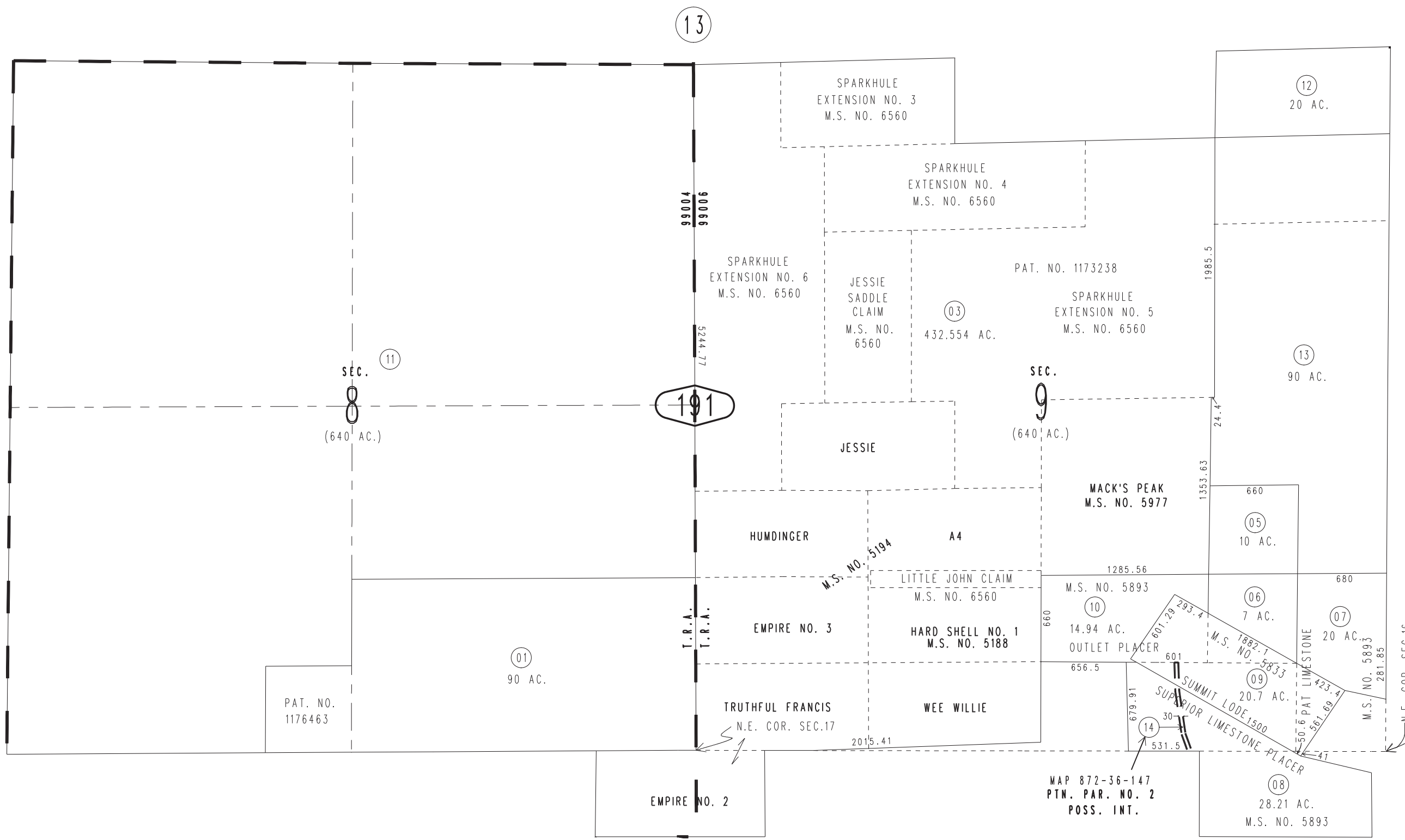
Sec.8 & Ptn. Sec.9,15,16&17, T.6N.,R.4W., S.B.B.&M.

Oro Grande
Tax Rate Area
99004 99006

0469-19



0468
13



17

20

REVISED
10/30/15 KC-MC

Assessor's Map
Book 0469 Page 19
San Bernardino County