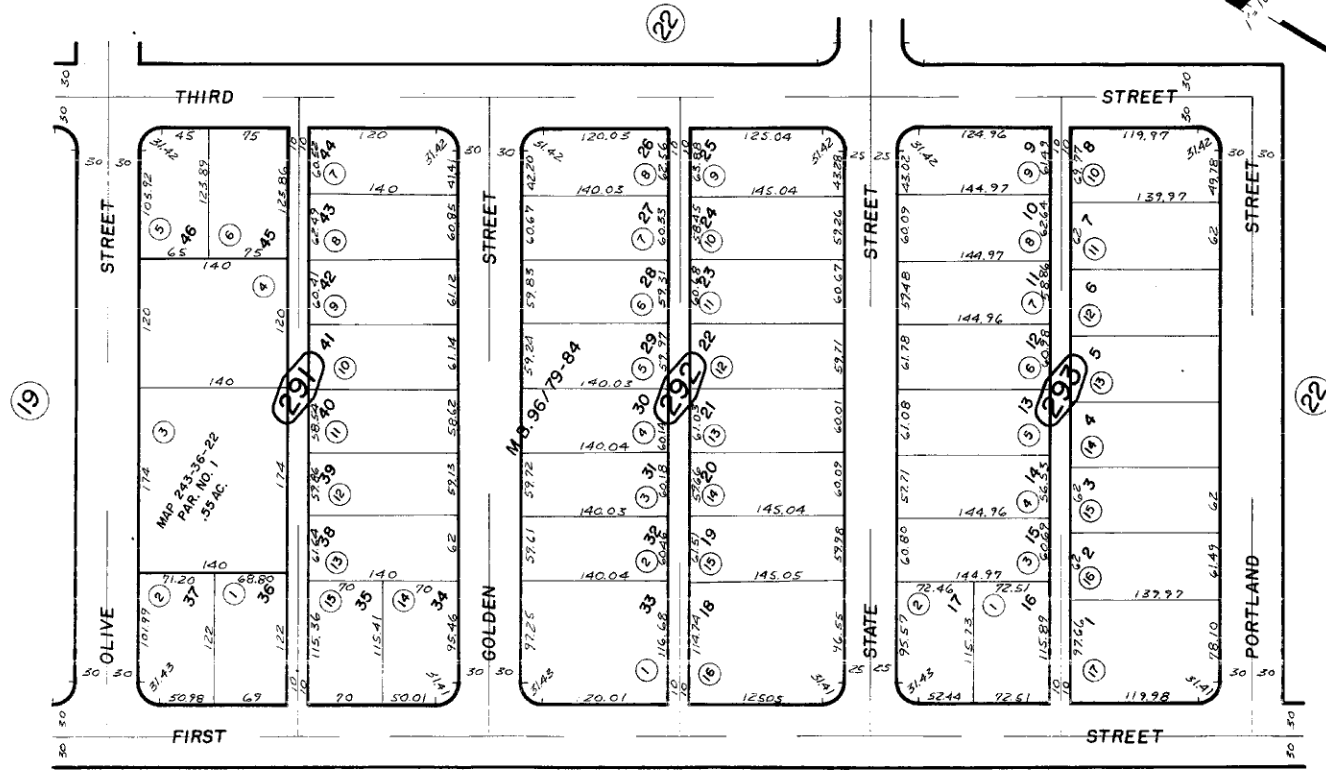




Por. N1/2 Fract. Sec. 19, T.6N., R.4W., S.B.B.&M.

Oro Grande
Tax Rate Area
99008

468-29



Por. Tract No. 7681, M.B. 96/79-84

BLB
Aug. 1966

Assessor's Map
Book 468, Page 29
San Bernardino County

REVISED
8/2/66
2-6-68