

THIS MAP IS FOR THE PURPOSE
OF AD VALOREM TAXATION ONLY.

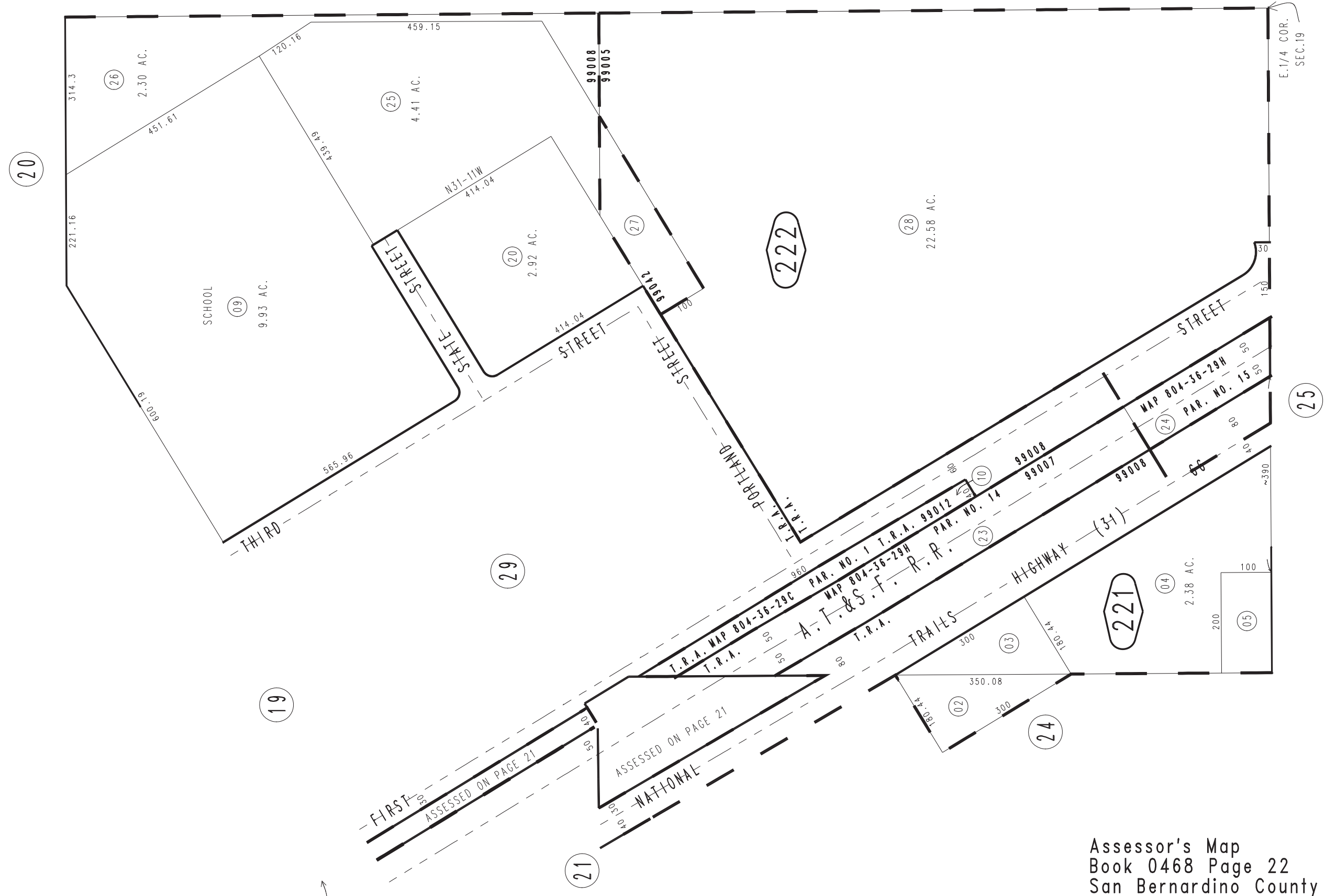
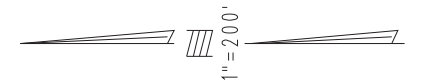
Ptn. N.1/2 Fract. Sec.19, T.6N.,R.4W., S.B.B.&M.

Oro Grande
Tax Rate Area
99005,99007,99008
99012,99042

0468-22



0469
21



May 2004

Assessor's Map
Book 0468 Page 22
San Bernardino County

REVISED
05/21/10 RU
04/26/11 GW-MC