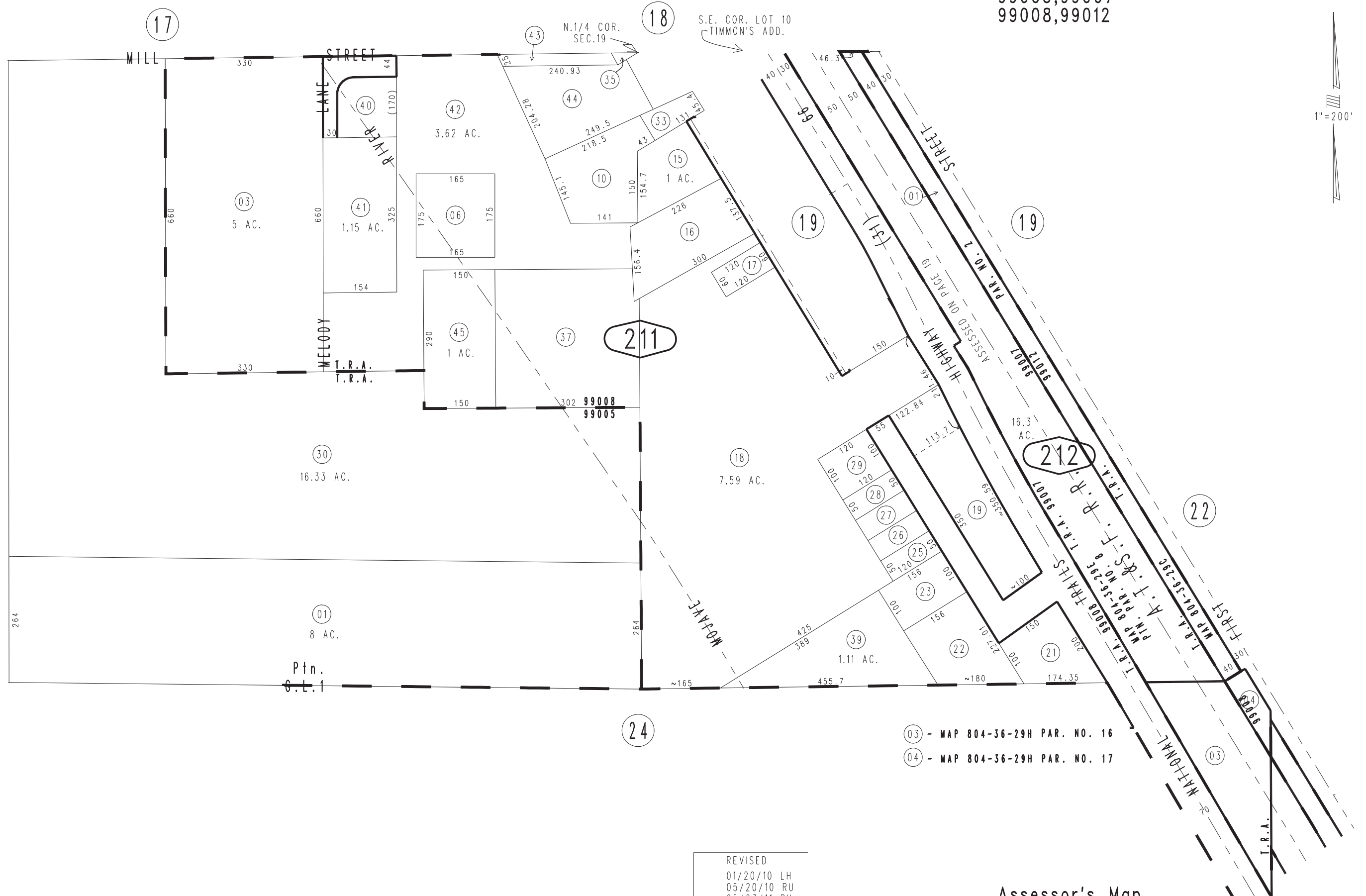


THIS MAP IS FOR THE PURPOSE
OF AD VALOREM TAXATION ONLY.

Ptn. N.1/2 Fract. Sec.19, T.6N.,R.4W., S.B.B.&M.

Oro Grande
Tax Rate Area
99005,99007
99008,99012

0468-21



24

24

- (03) - MAP 804-36-29H PAR. NO. 16
- (04) - MAP 804-36-29H PAR. NO. 17

REVISED
01/20/10 LH
05/20/10 RU
05/03/11 RU

Assessor's Map
Book 0468 Page 21
San Bernardino County