

THIS MAP IS FOR THE PURPOSE  
OF AD VALOREM TAXATION ONLY.

Ptn. N.1/2 Fract. Sec. 19, T.6N.,R.4W., S.B.B.&M.  
H.W. Timmon's Addition, M.B. 8/89 (14)

Oro Grande  
Tax Rate Area  
99007.99008

0468-18



1" = 50'

A.T.&S.F. R.R.

MAP 804-36-29

ASSESSED ON PAGE 17

PTN. PAR. NO. 2

T.R.A. 99040

T.R.A.

99007

T.R.A. 99039

T.R.A.

99008

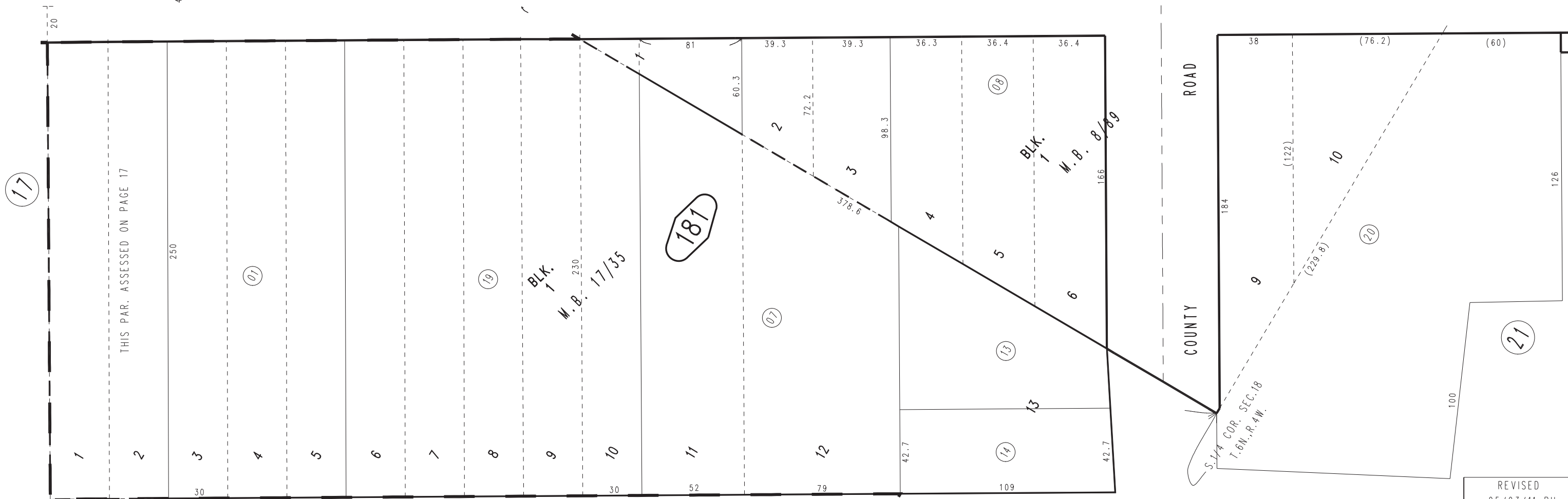
NATIONAL

TRAILS

HIGHWAY

(31)

66



(17)

THIS PAR. ASSESSED ON PAGE 17

181

BLK. 19  
M.B. 17/35

BLK. 13  
M.B. 8/89

COUNTY ROAD

(21)

S. 1/4 COR. SEC. 18  
T. 6N., R. 4W.

(17)