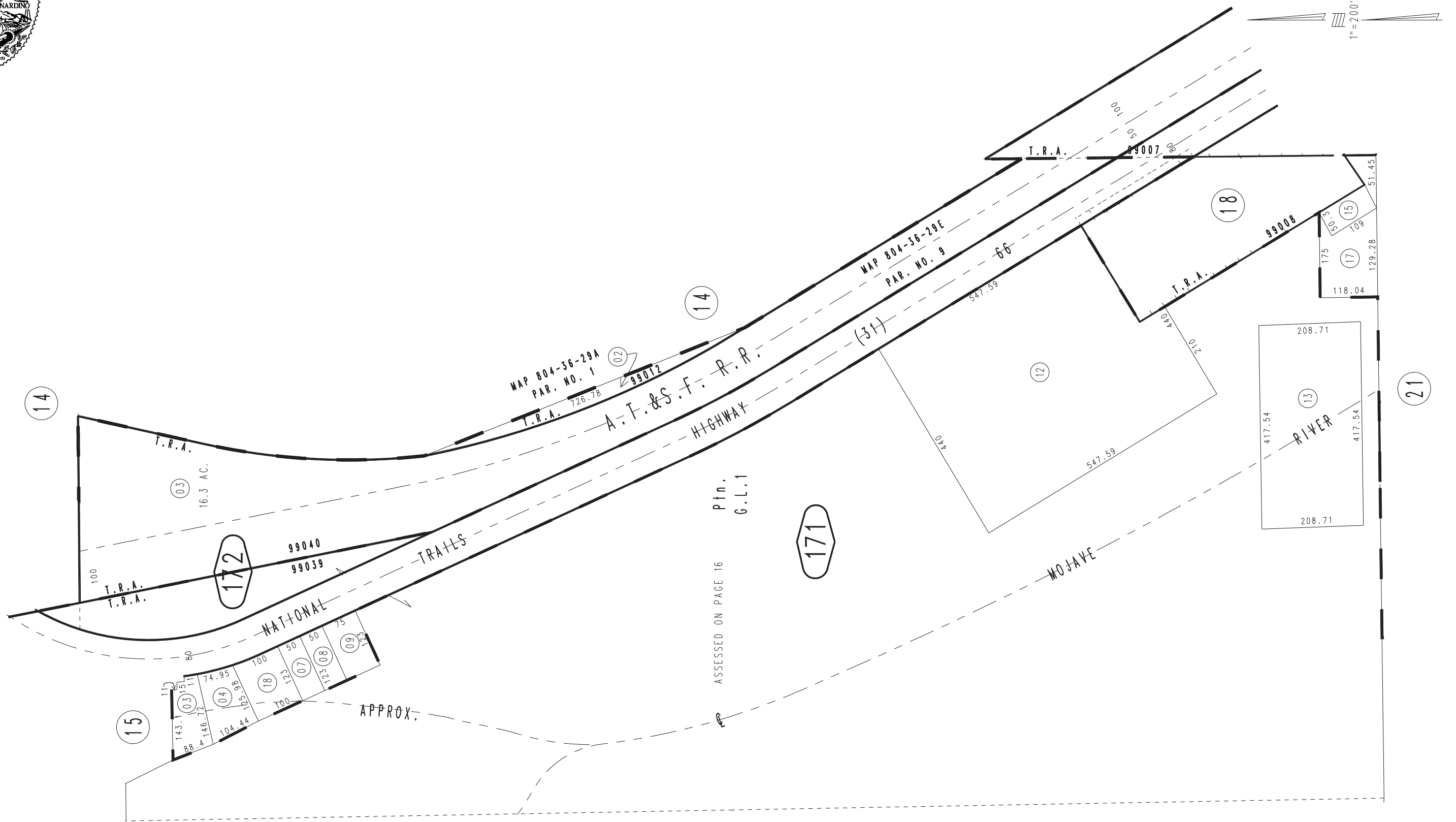


THIS MAP IS FOR THE PURPOSE
OF AD VALOREM TAXATION ONLY.

Ptn. Fract. Sec.18, T.6N.,R.4W., S.B.B.&M.
Ptn. Lawrence Addition, M.B. 17/35

Oro Grande
Tax Rate Area
99007 99008
99012 99039 99040

0468-17



1" = 200'

Ptn.
G.L.1
ASSESSED ON PAGE 16