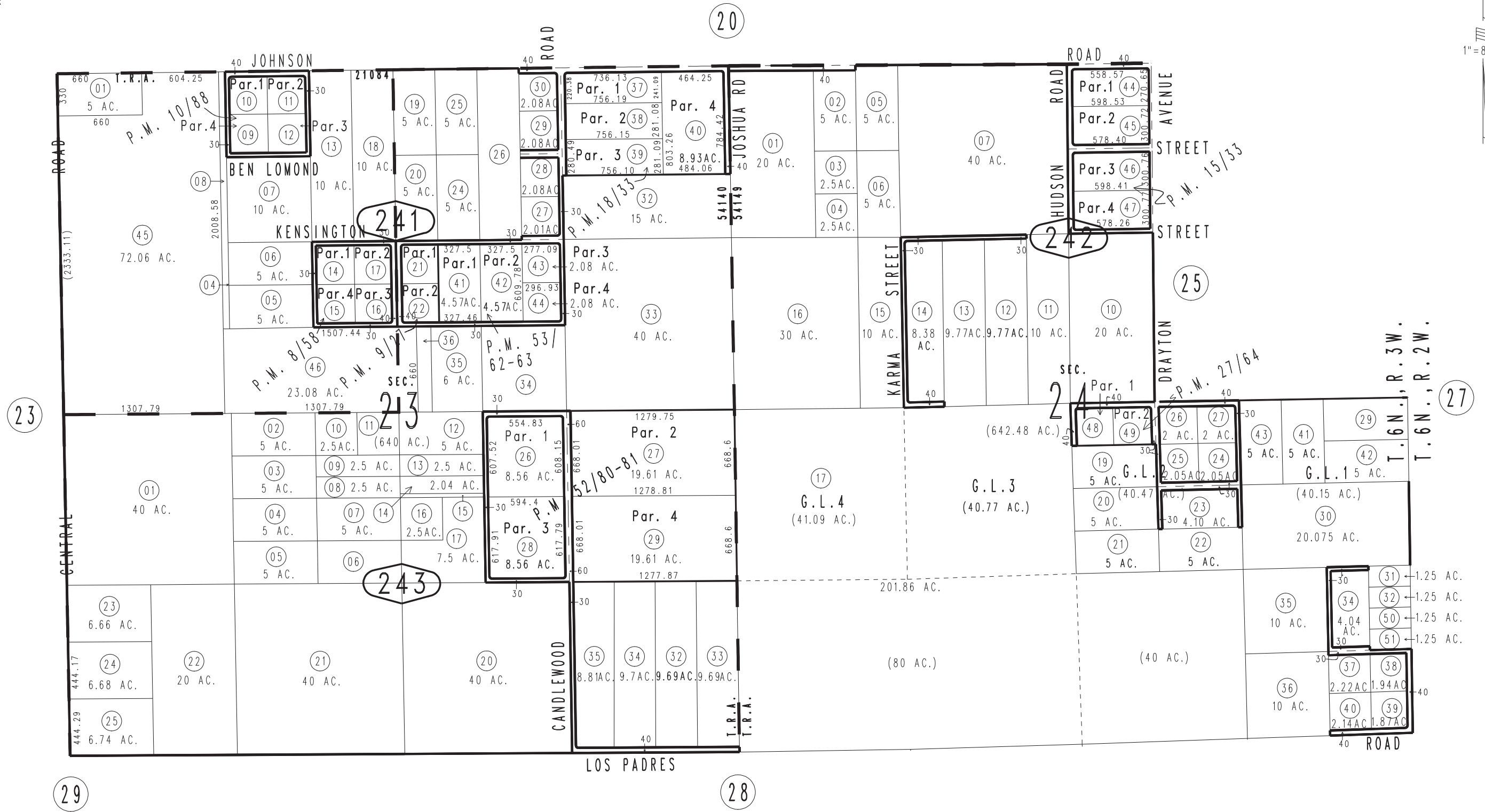
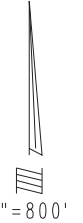


THIS MAP IS FOR THE PURPOSE OF AD VALOREM TAXATION ONLY.

Sec.23 & Ptn. Fractional Sec.24, T.6N.,R.3W., S.B.B.&M.

Town of Apple Valley 0463-24
Apple Valley Unified
Tax Rate Area
21084,54140,54149



- Parcel Map No. 2630, P.M. 27/64
- Parcel Map No. 2066, P.M. 18/33
- Parcel Map No. 1631, P.M. 15/33
- Parcel Map No. 1064, P.M. 10/88
- Parcel Map No. 1065, P.M. 9/27
- Parcel Map No. 933, P.M. 8/58
- Parcel Map No. 5208, P.M. 53/62-63
- Parcel Map No. 5427, P.M. 52/80-81

Assessor's Map
Book 0463 Page 24
San Bernardino County

REVISED
06/13/24 KA