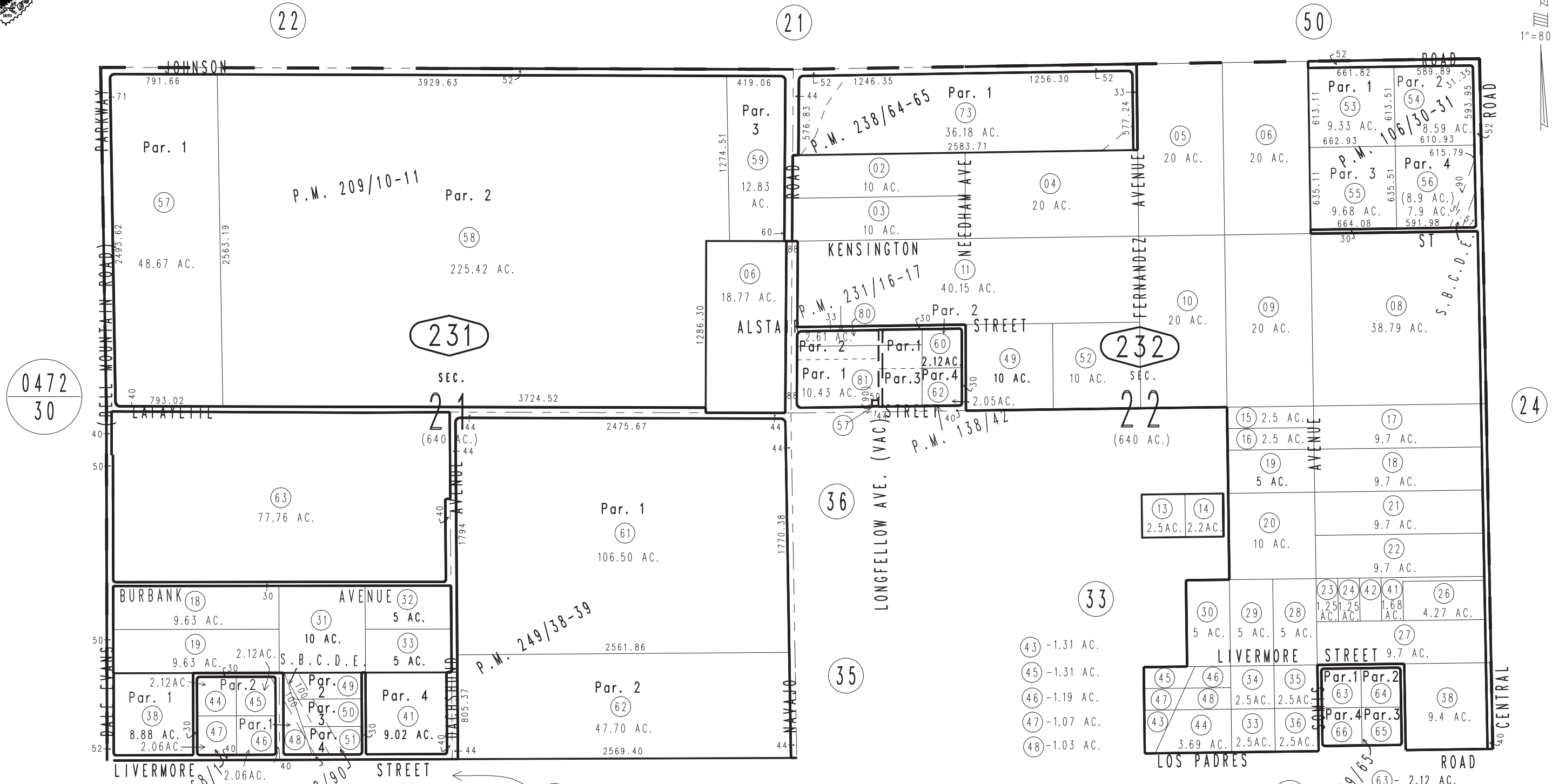
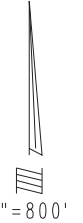


THIS MAP IS FOR THE PURPOSE OF AD VALOREM TAXATION ONLY.

Sec.21 & Ptn. Sec.22, T.6N.,R.3W., S.B.B.&M.

Town of Apple Valley 0463-23
Tax Rate Area
21038



0472
30

231

232

24

- (48)-1.67 AC., 1.14 AC. NET
- (49)-2.63 AC., 2.05 AC. NET
- (50)-2.44 AC., 1.58 AC. NET
- (51)-2.09 AC., 1 AC. NET

- Parcel Map No. 11998, P.M. 139/65
- Parcel Map No. 10088, P.M. 138/42
- Parcel Map No. 10863, P.M. 129/90
- Parcel Map No. 9574, P.M. 106/30-31
- Parcel Map No. 6738, P.M. 68/1

- Parcel Map No. 19645, P.M. 249/38-39
- Parcel Map No. 19191, P.M. 238/64-65
- Parcel Map No. 18790, P.M. 231/16-17
- Parcel Map No. 15771, P.M. 209/10-11

- (63)- 2.12 AC.
- (64)- 2.12 AC.
- (65)- 2.05 AC.
- (66)- 2.05 AC.

Assessor's Map
Book 0463 Page 23
San Bernardino County

REVISED
12/05/24 KA