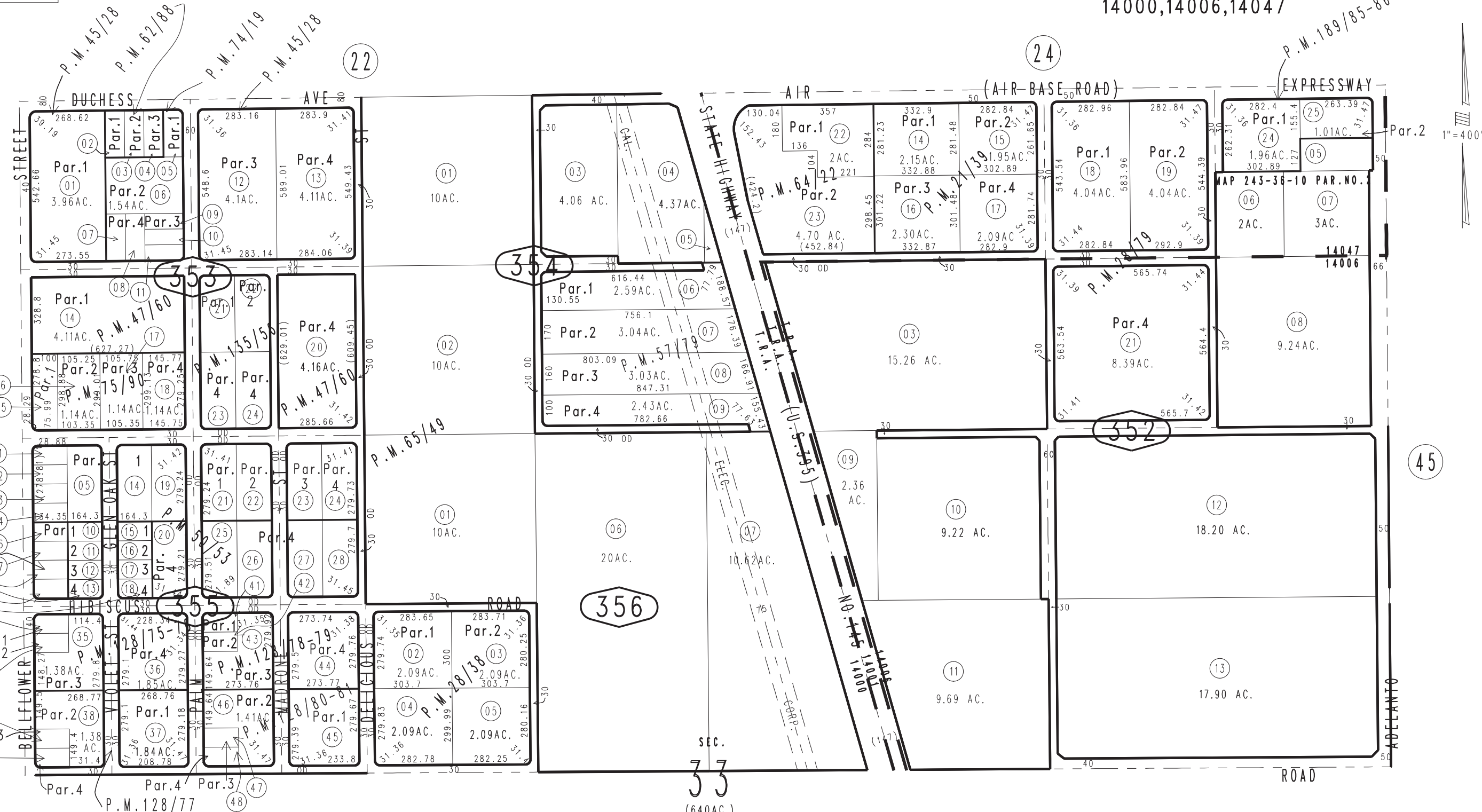


THIS MAP IS FOR THE PURPOSE OF AD VALOREM TAXATION ONLY.

N.1/2. Sec.33, T.6N.,R.5W., S.B.B.&M.

City of Adelanto
Tax Rate Area
14000,14006,14047

0459-35



Ptn. Parcel Map No.6511, P.M.62/88
Parcel Map No.6207, P.M.57/79
Ptn. Parcel Map No.5397, P.M.50/53
Ptn. Parcel Map No.4948, P.M.47/60
Ptn. Parcel Map No.4646, P.M.45/28
Ptn. Parcel Map No.3117, P.M.28/79
Parcel Map No.3165, P.M.28/38
Parcel Map No.2502, P.M.21/39

Parcel Map No.9679, P.M.113/52-53
Parcel Map No.9743, P.M.113/50-51
Parcel Map No.7455, P.M.75/90
Parcel Map No.7316, P.M.74/19
Ptn. Parcel Map No.6772, P.M.68/55
Parcel Map No.6507, P.M.65/49
Parcel Map No.6669, P.M.64/22

Parcel Map No.15421, P.M.189/85-86
Parcel Map No.11009, P.M.135/56
Parcel Map No.7749, P.M.128/80-81
Parcel Map No.7748, P.M.128/78-79
Parcel Map No.7747, P.M.128/77
Parcel Map No.7746, P.M.128/75-76

Assessor's Map
Book 0459 Page 35
San Bernardino County

REVISED
07/18/18 KA
06/26/19 KA