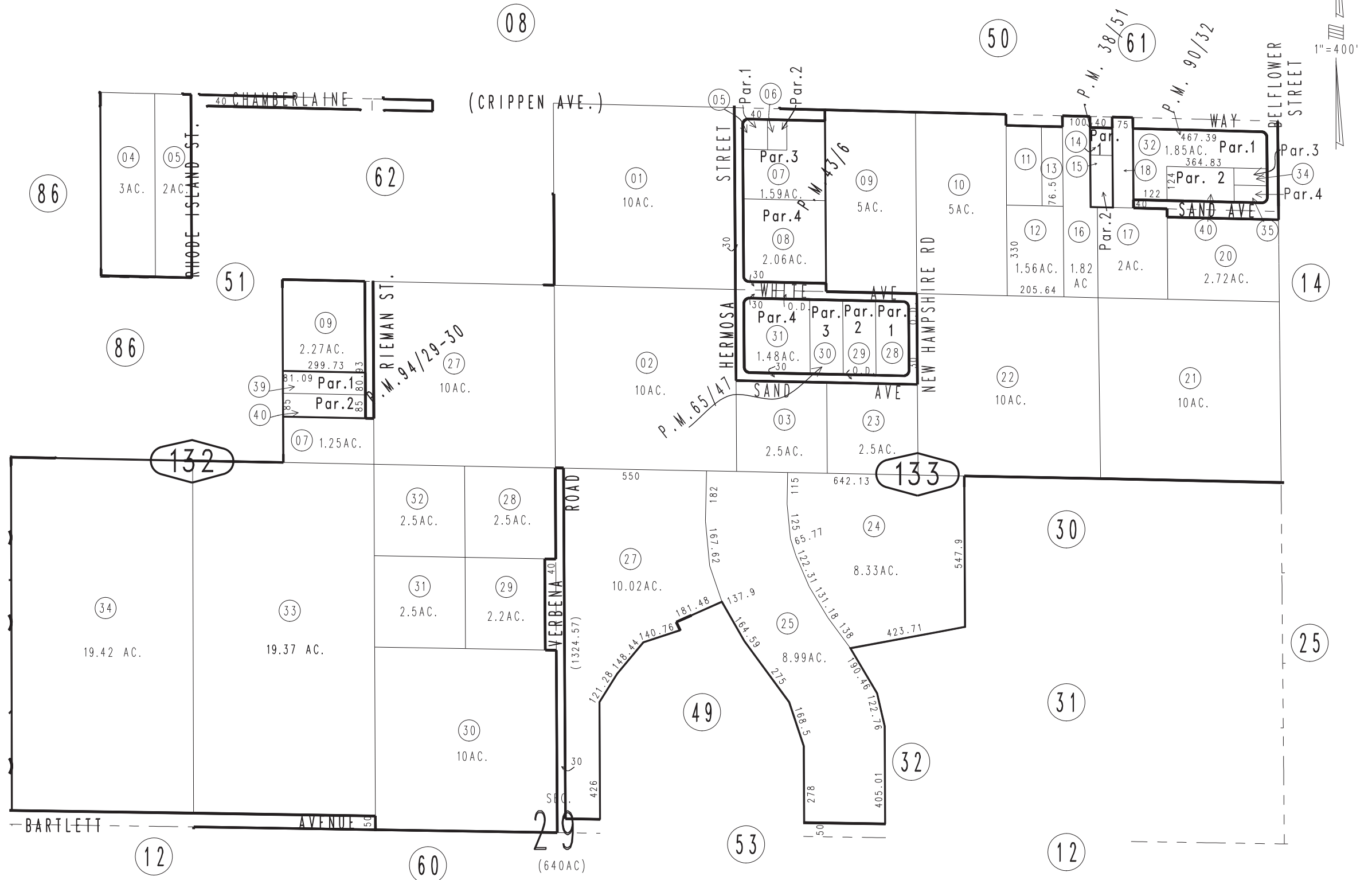


THIS MAP IS FOR THE PURPOSE  
OF AD VALOREM TAXATION ONLY.

Ptn. North 1/2, Sec.29, T.6N,R.5W., S.B.B.&M.

City of Adelanto  
Tax Rate Area  
14000

0459-13



Parcel Map No.8947, P.M.94/29-30  
 Parcel Map No.8727, P.M.90/32  
 Parcel Map No.6704, P.M.65/47  
 Parcel Map No.4412, P.M.43/6  
 Parcel Map No.3932, P.M.38/51

November 2003

Assessor's Map  
 Book 0459 Page 13  
 San Bernardino County

REVISED  
 07/19/21 GW-MC  
 11/18/22 KC