

THIS MAP IS FOR THE PURPOSE
OF AD VALOREM TAXATION ONLY.

S.1/2, Fractional Sec.19, T.6N.,R.6W., S.B.B.&M.

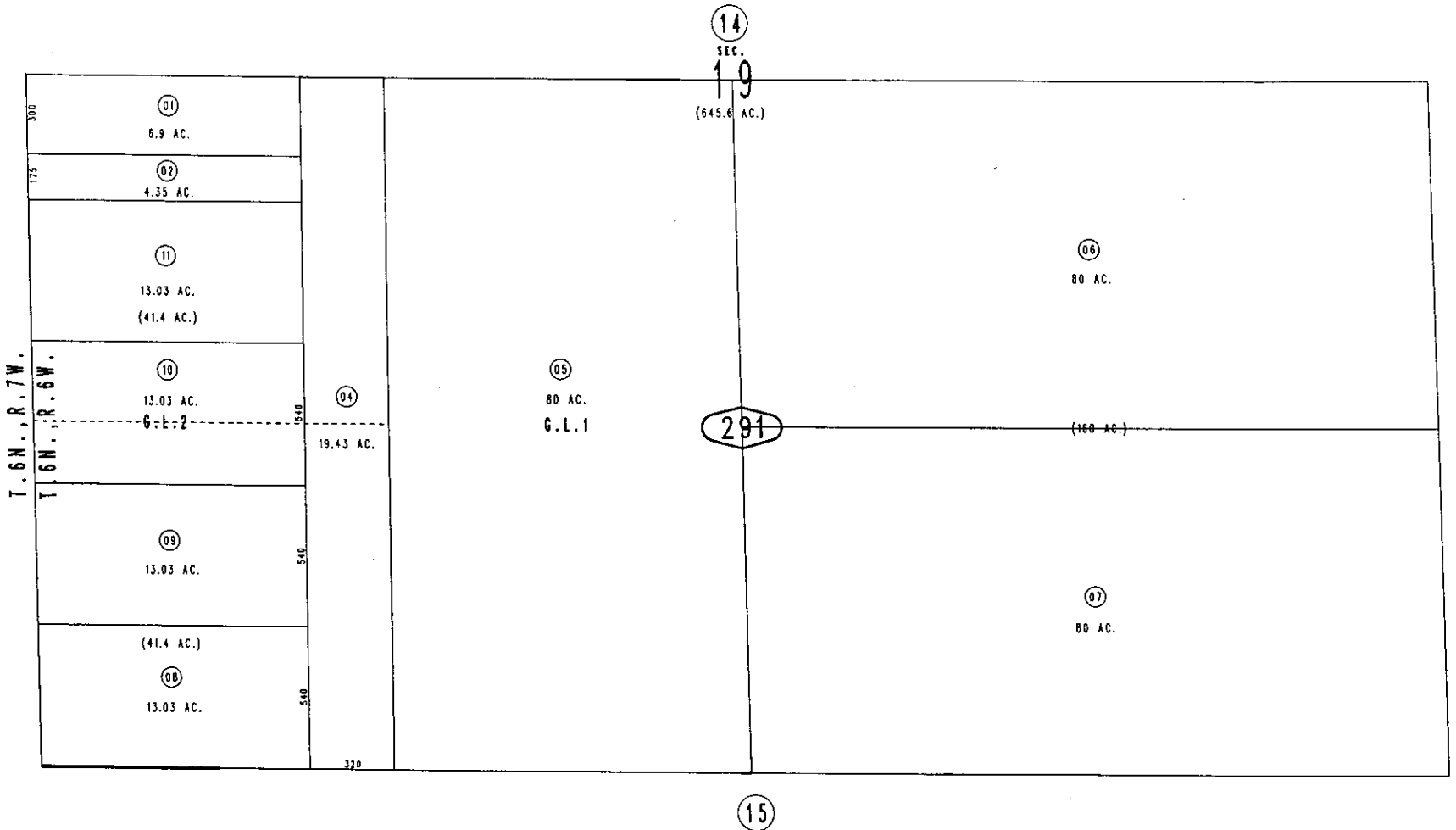
Adelanto Unified
Tax Rate Area
51036

0458-29



1"=400'

0457
11



February 2004

Assessor's Map
Book 0458 Page 29
San Bernardino County

REVISED