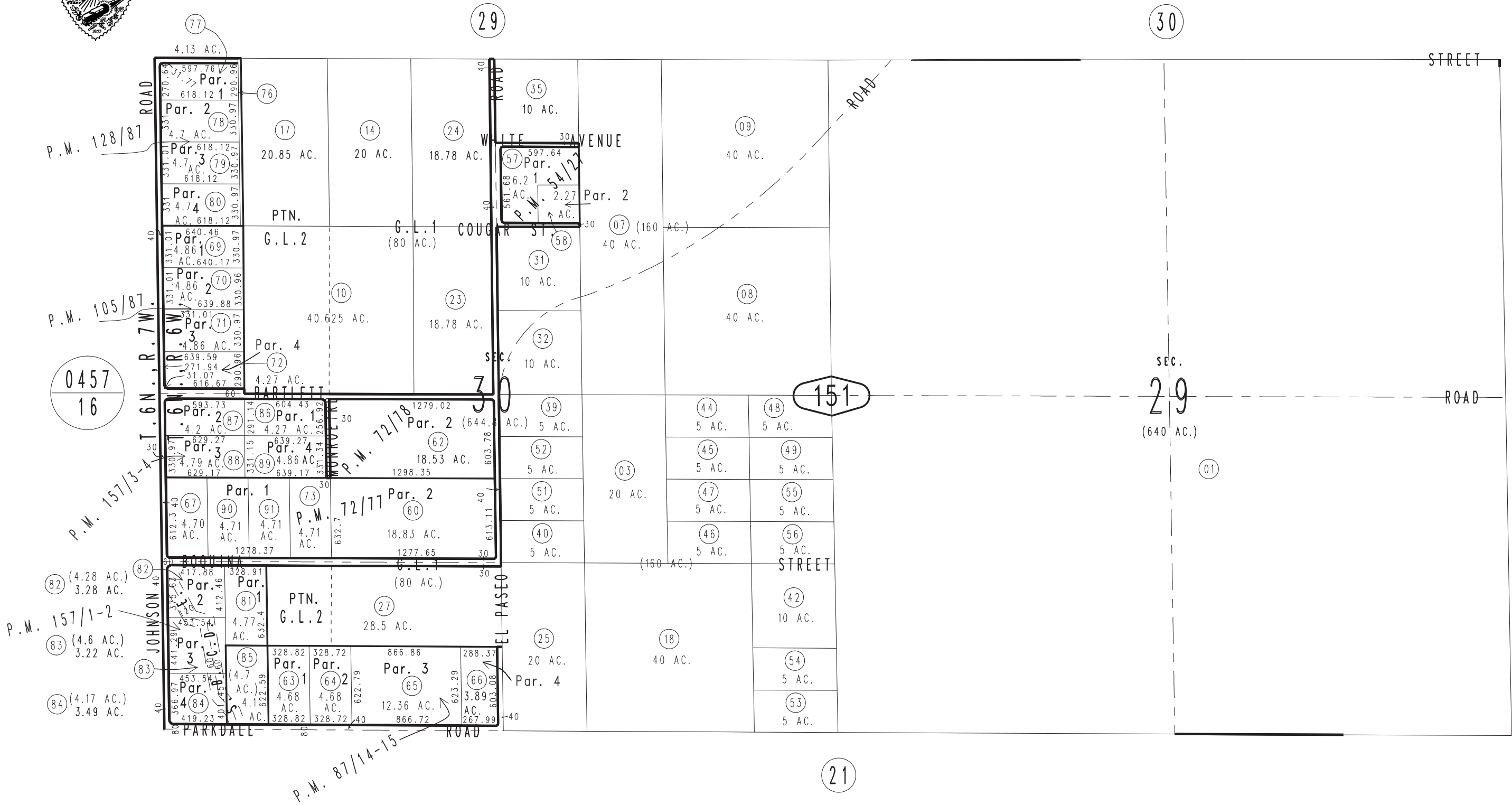


THIS MAP IS FOR THE PURPOSE OF AD VALOREM TAXATION ONLY.

Sec.29, & Fractional Sec.30, T.6N.,R.6W., S.B.B.&M.

Adelanto Unified
Tax Rate Area
51036

0458-15



Parcel Map No. 11073, P.M. 128/87
 Parcel Map No. 9811, P.M. 105/87
 Parcel Map No. 8422, P.M. 87/14-15
 Parcel Map No. 7303, P.M. 72/77
 Ptn. Parcel Map No. 7304, P.M. 72/78 P.M. 12693, P.M. 157/3-4
 Parcel Map No. 3212, P.M. 54/27 P.M. 12695, P.M. 157/1-2

February 2004

Assessor's Map
Book 0458 Page 15
San Bernardino County

REVISED
06/05/12 GW-MC