

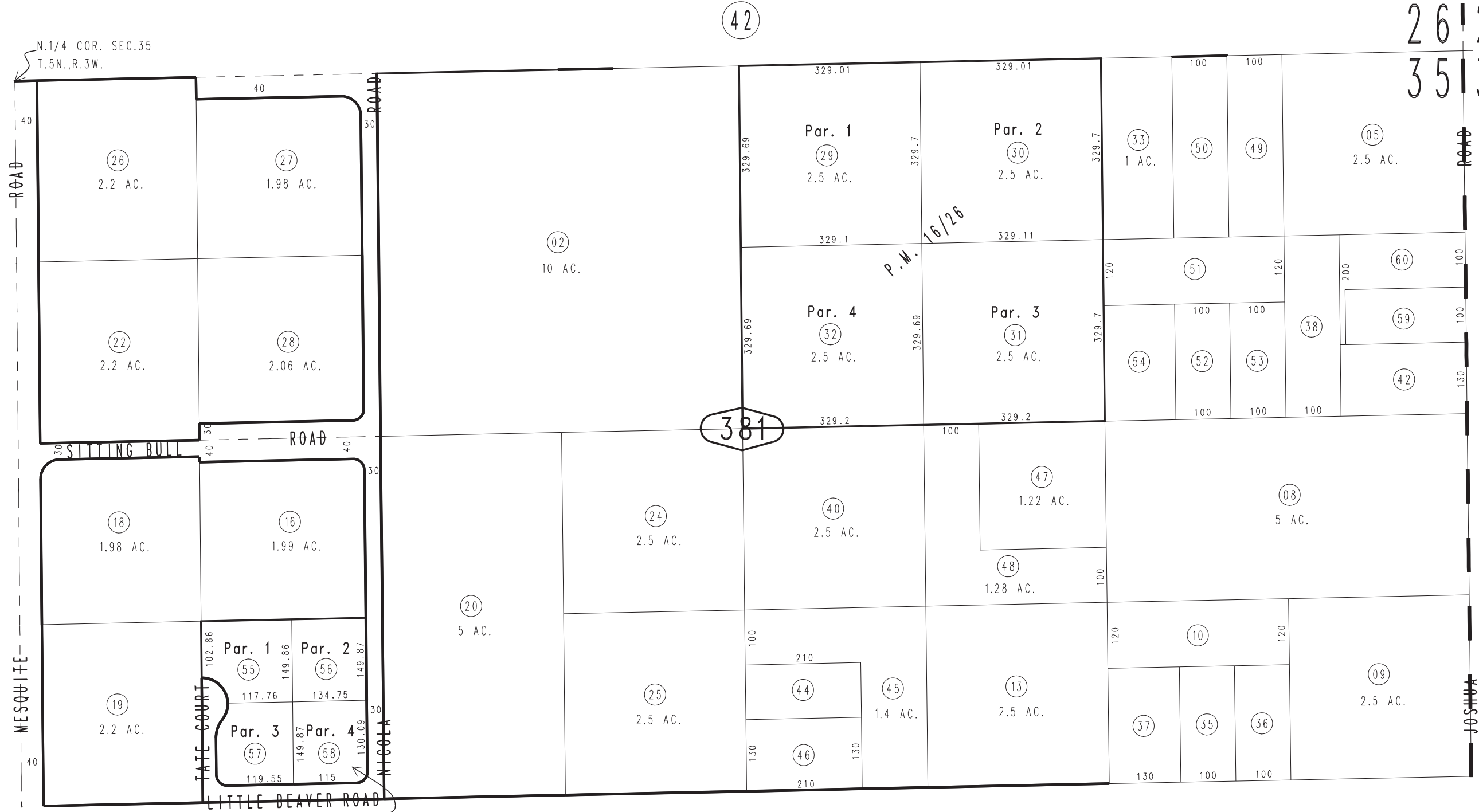
THIS MAP IS FOR THE PURPOSE
OF AD VALOREM TAXATION ONLY.

Ptn. N.E.1/4 Sec.35, T.5N.,R.3W., S.B.B.&M.

Town of Apple Valley 0439-38
Tax Rate Area
21000



26 | 25
35 | 36



12

41

42

381

14

N.1/4 COR. SEC.35
T.5N.,R.3W.

MESQUITE ROAD

MESQUITE

SITTING BULL ROAD

TATE COURT

LITTLE BEAVER ROAD

P.M. 153/44-45

P.M. 16/26

26
2.2 AC.

27
1.98 AC.

22
2.2 AC.

28
2.06 AC.

18
1.98 AC.

16
1.99 AC.

19
2.2 AC.

Par. 1
55
117.76

Par. 2
56
134.75

Par. 3
57
149.87

Par. 4
58
115

20
5 AC.

24
2.5 AC.

25
2.5 AC.

02
10 AC.

Par. 1
29
2.5 AC.

Par. 2
30
2.5 AC.

Par. 4
32
2.5 AC.

Par. 3
31
2.5 AC.

47
1.22 AC.

48
1.28 AC.

45
1.4 AC.

13
2.5 AC.

33
1 AC.

50

49

05
2.5 AC.

51

54

52

53

38

60

59

42

08
5 AC.

10

37

35

36

09
2.5 AC.

Parcel Map No. 11665, P.M. 153/44-45
Parcel Map No. 1827, P.M. 16/26

May 2004

Assessor's Map
Book 0439 Page 38
San Bernardino County

REVISED
03/07/05 LH
11/28/05 GW
04/13/06 GL