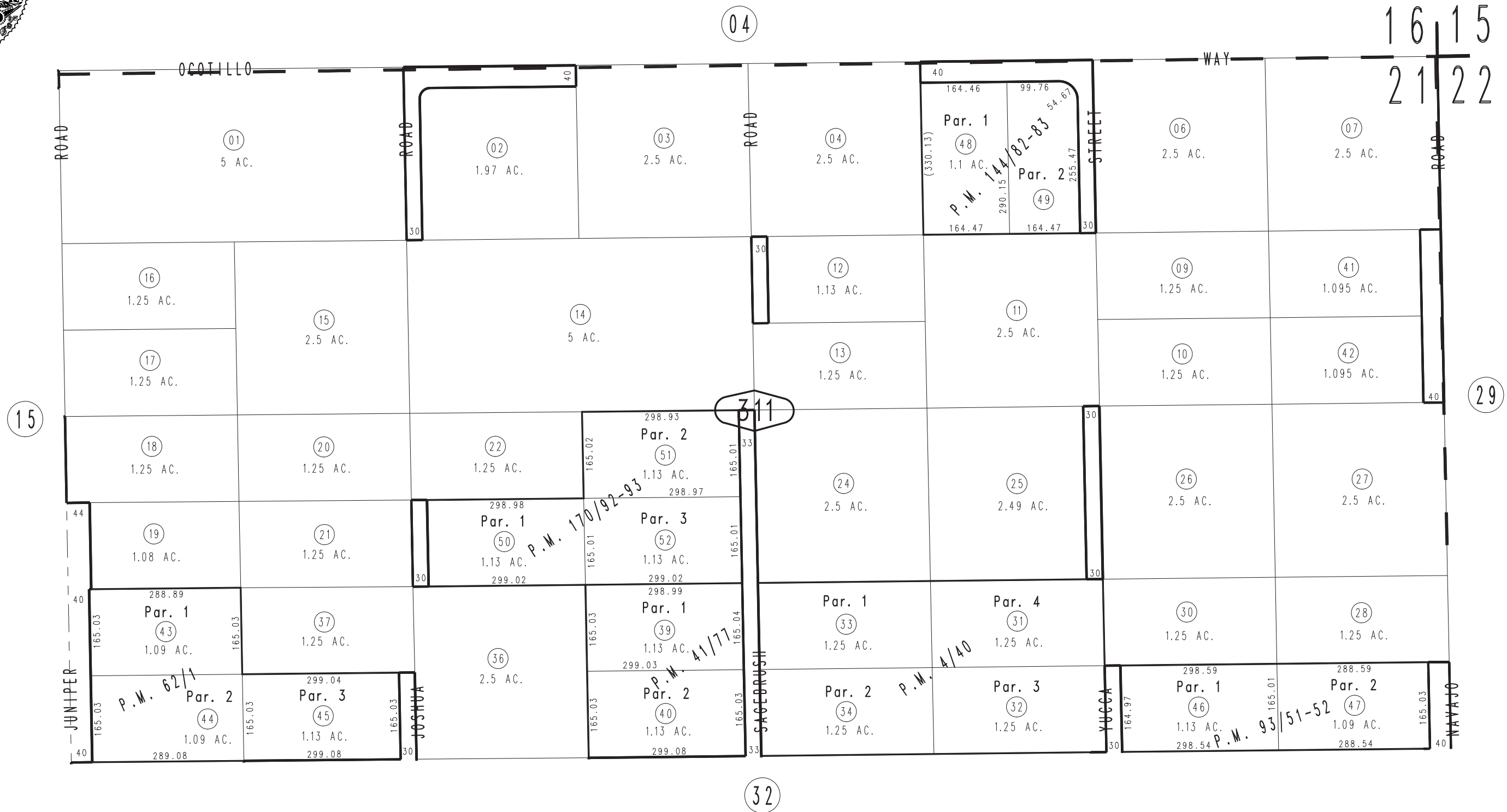


THIS MAP IS FOR THE PURPOSE
OF AD VALOREM TAXATION ONLY.

N.1/2, N.E.1/4, Sec.21, T.4N.,R.3W., S.B.B.&M.

Apple Valley
Tax Rate Area
54005

0438-31



- Parcel Map No. 13464, P.M. 170/92-93
- Parcel Map No. 12283, P.M. 144/82-83
- Parcel Map No. 8436, P.M. 93/51-52
- Parcel Map No. 6378, P.M. 62/1
- Parcel Map No. 4508, P.M. 41/77
- Parcel Map No. 426, P.M. 4/40

April 2004

Assessor's Map
Book 0438 Page 31
San Bernardino County

REVISED
03/07/16 KC