

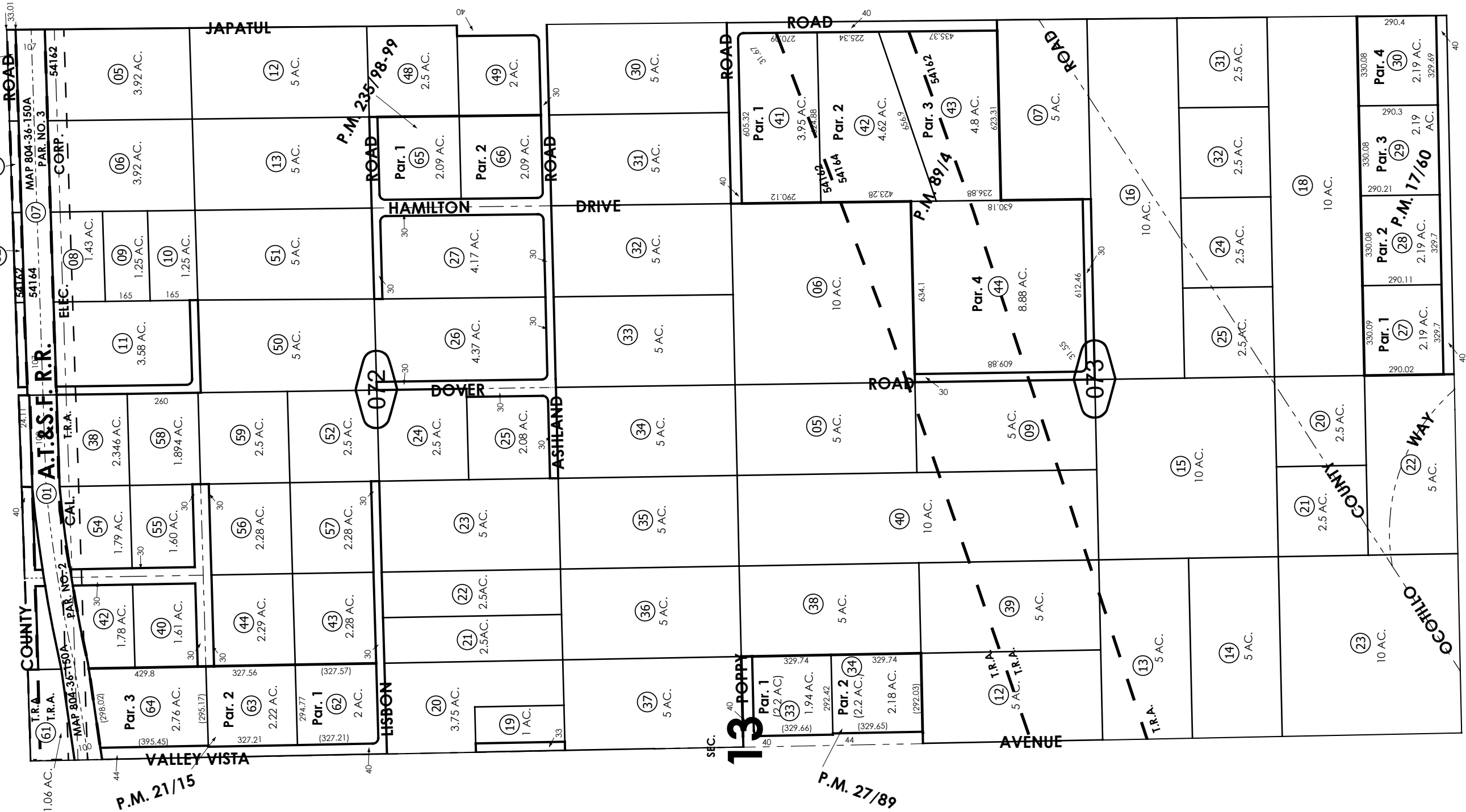


0435
10

3080
21

08

23



Parcel Map No. 2014, P.M. 17/60
 Parcel Map No. 2427, P.M. 21/15
 Parcel Map No. 3072, P.M. 27/89
 Parcel Map No. 8267, P.M. 89/4
 Parcel Map No. 19008, P.M. 235/98-99

April 2004

Assessor's Map
 Book 0438 Page 07
 San Bernardino County

REVISED
 06/25/25 BS