

THIS MAP IS FOR THE PURPOSE OF AD VALOREM TAXATION ONLY.

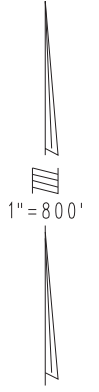
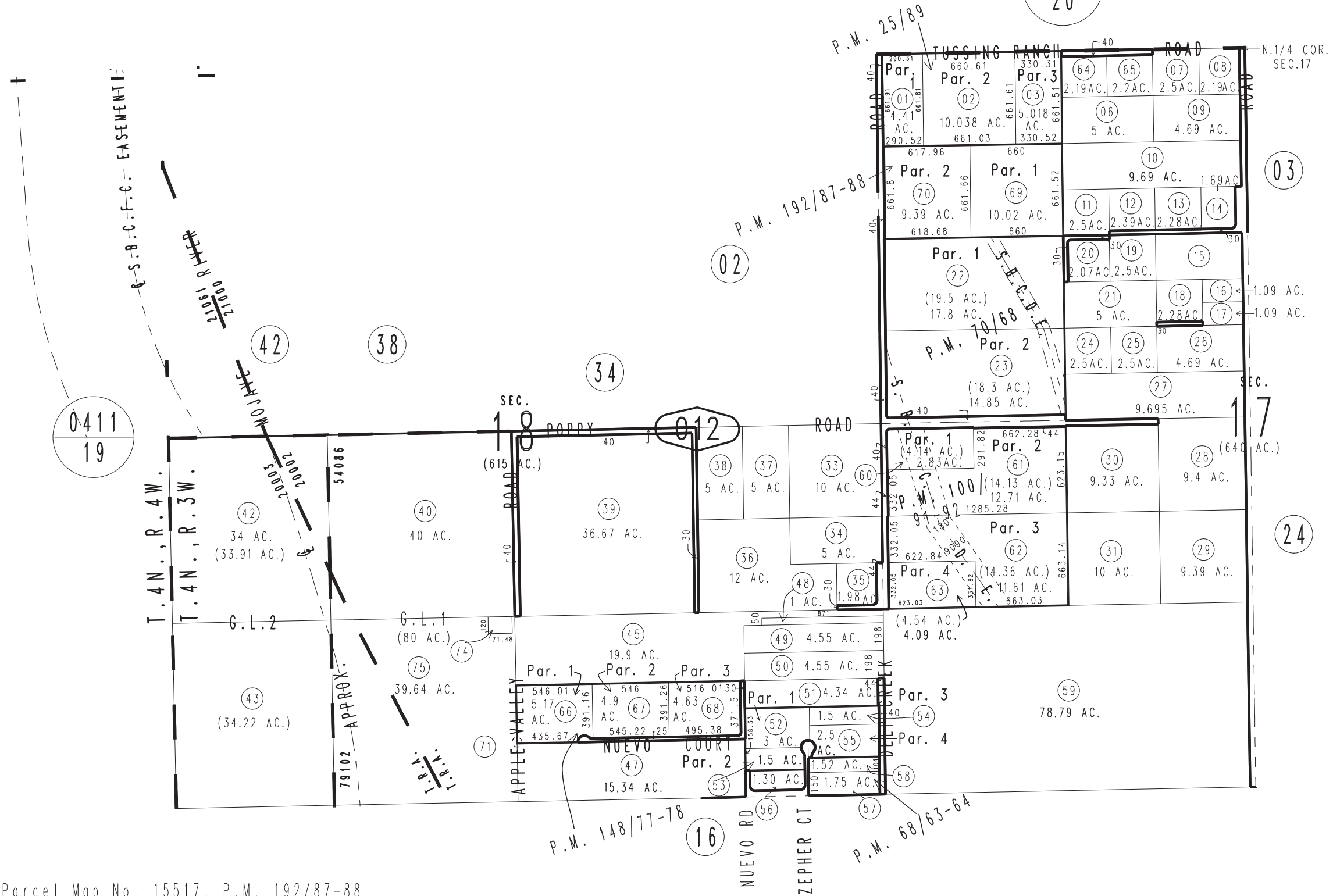


W.1/2 Sec.17 & Ptn. Fractional Sec.18, T.4N.,R.3W., S.B.B.&M.

Hesperia Unified
City of Hesperia
Apple Valley Unified
Tax Rate Area
20002 20003
54086 79102

0438-01

0434
20



Parcel Map No. 15517, P.M. 192/87-88
Parcel Map No. 12688, P.M. 148/77-78
Parcel Map No. 9371, P.M. 100/91-92
Parcel Map No. 7085, P.M. 70/68
Parcel Map No. 6483, P.M. 68/63-64
Ptn. Parcel Map No. 2926, P.M. 25/89

April 2004

Assessor's Map
Book 0438 Page 01
San Bernardino County

REVISED
07/25/24 CA
08/26/24 KC-MC