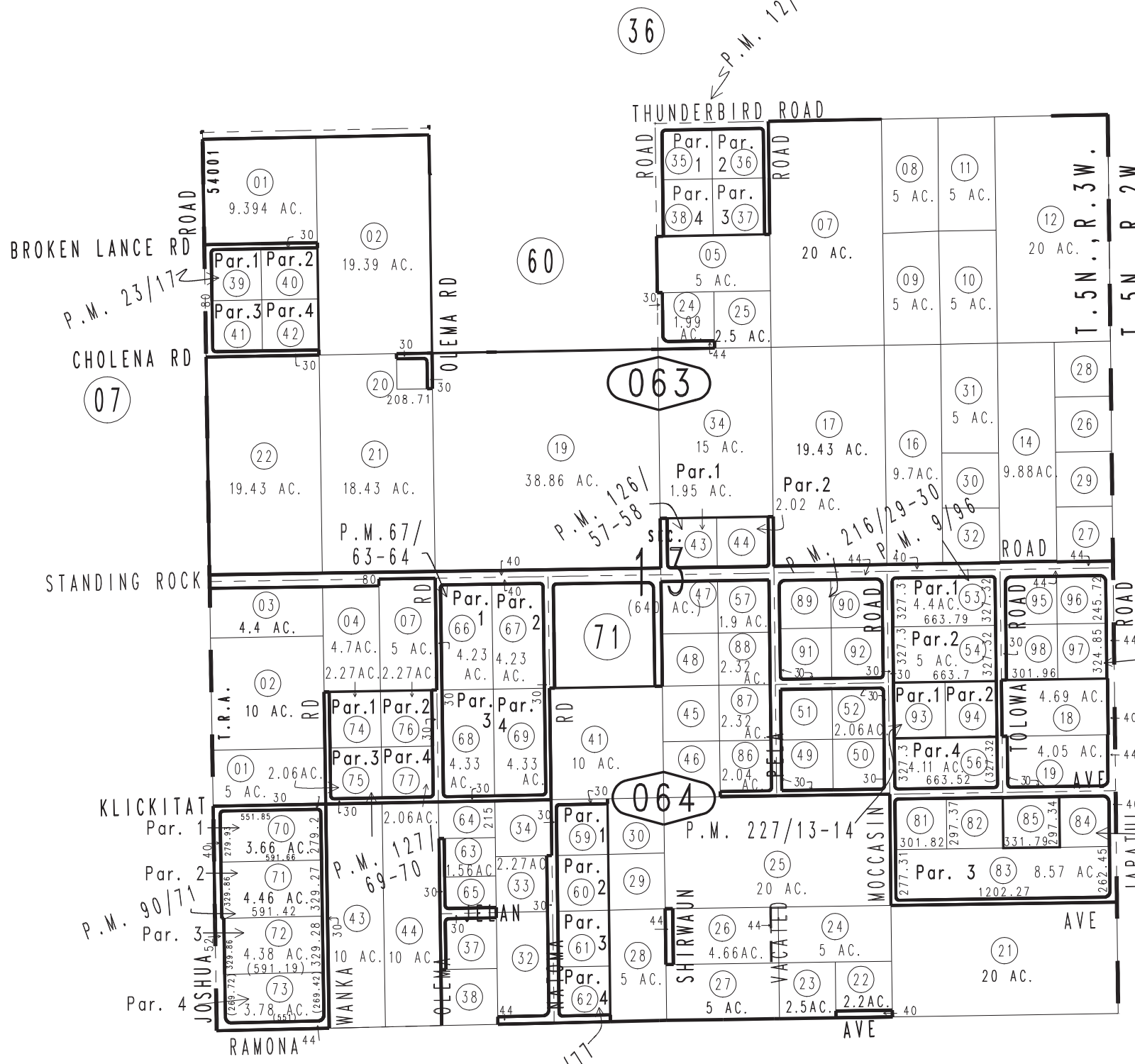
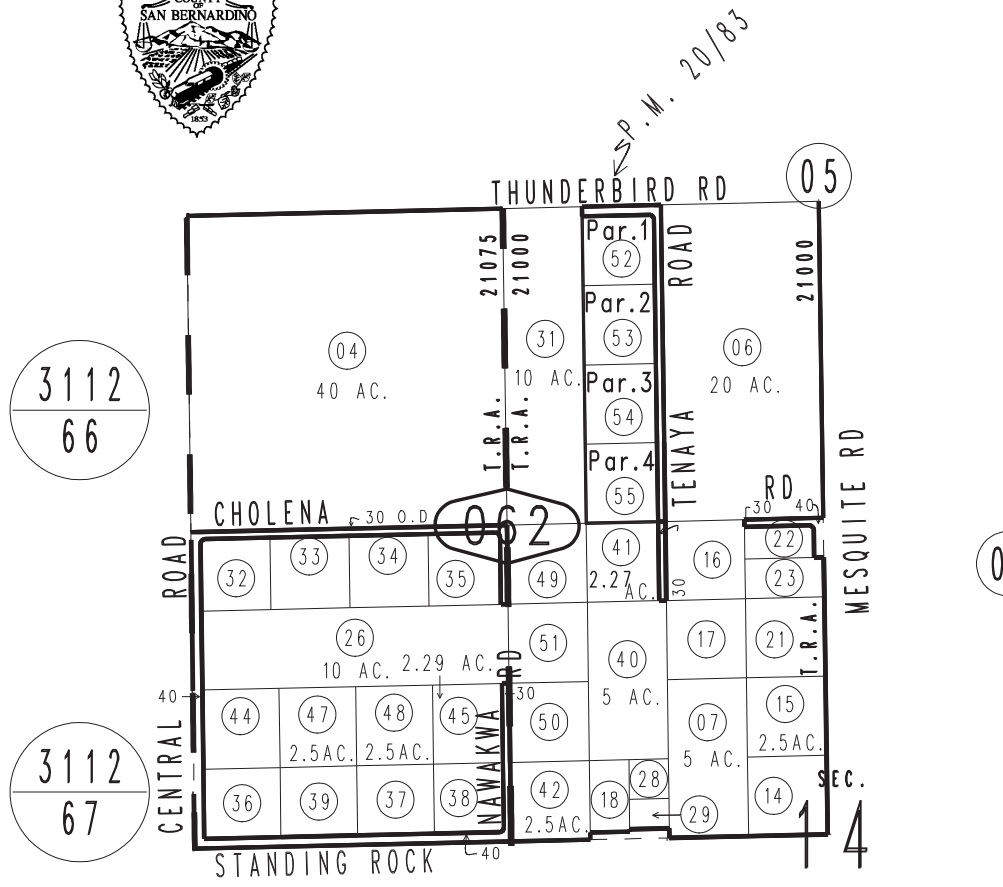


THIS MAP IS FOR THE PURPOSE OF AD VALOREM TAXATION ONLY.

Sec.13 & N.W.1/4 Sec.14, T.5N.,R.3W., S.B.B.&M.

Town of Apple Valley 0437-06  
 Apple Valley  
 Tax Rate Area  
 21000 21075 54001



- (89) Par. 1 1.96 AC.
- (90) Par. 2 1.96 AC.
- (91) Par. 3 2.06 AC.
- (92) Par. 4 2.06 AC.
- (93) Par. 1 2.27 AC.
- (94) Par. 2 2.27 AC.
- (95) Par. 1 1.94 AC.
- (96) Par. 2 1.85 AC.
- (97) Par. 3 2.15 AC.
- (98) Par. 4 2.25 AC.
- (99) → 1.28 AC.
- (81) → Par. 1 2.06 AC.
- (82) → Par. 2 2.26 AC.
- (84) → Par. 4 1.99 AC.
- (85) → 2.26 AC.
- (49) → 2.05 AC.
- (50) → 2.05 AC.

Parcel Map No. 8795, P.M. 90/71  
 Parcel Map No. 6447, P.M. 67/63-64  
 Parcel Map No. 3153, P.M. 29/77  
 Parcel Map No. 2506, P.M. 23/17  
 Parcel Map No. 2348, P.M. 20/83  
 Parcel Map No. 1487, P.M. 12/59  
 Parcel Map No. 974, P.M. 9/96

Parcel Map No. 17033, P.M. 238/82-83  
 Parcel Map No. 18099, P.M. 227/13-14  
 Parcel Map No. 16962, P.M. 216/29-30  
 Parcel Map No. 11938, P.M. 161/9-10  
 Parcel Map No. 10761, P.M. 127/69-70  
 Parcel Map No. 11321, P.M. 126/57-58

May 2004

Assessor's Map  
 Book 0437 Page 06  
 San Bernardino County

REVISED  
 01/20/23 KA  
 02/27/23 JH  
 03/06/23 JH  
 03/09/23 JH  
 01/19/24 KA  
 03/26/24 CA