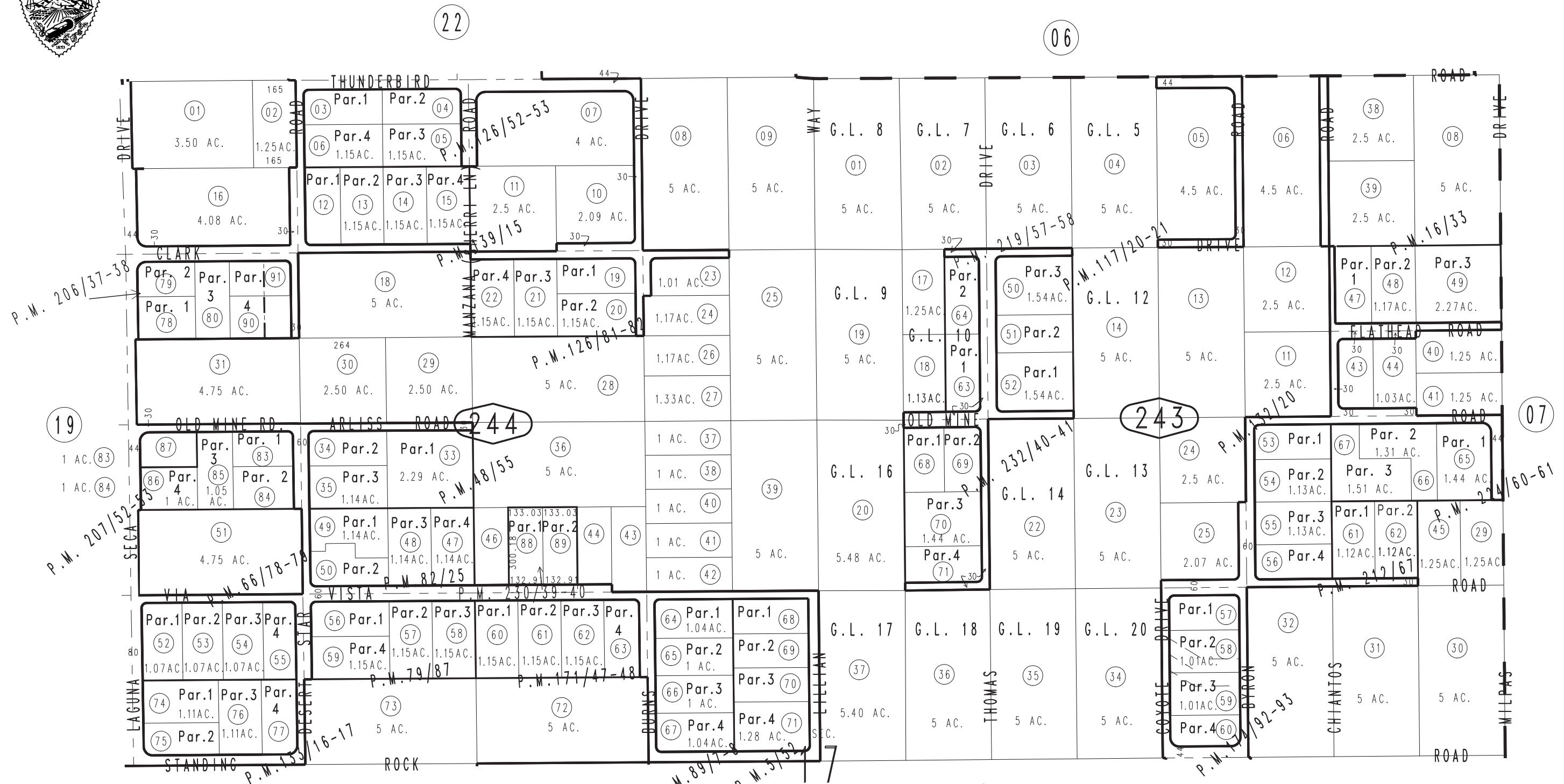


THIS MAP IS FOR THE PURPOSE
OF AD VALOREM TAXATION ONLY.

N.1/2 Fractional Sec. 17, T.5N., R.2W., S.B.M.

Apple Valley
Tax Rate Area
54021

0436-24



- | | | | |
|--------------------------------------|--------------------------------------|--------------------------------------|--------------------------------------|
| Parcel Map No. 10329, P.M. 117/20-21 | Parcel Map No. 13460, P.M. 174/92-93 | Parcel Map No. 17346, P.M. 219/57-58 | Parcel Map No. 18072, P.M. 232/40-41 |
| Parcel Map No. 8577, P.M. 89/7-8 | Parcel Map No. 13716, P.M. 171/47-48 | Parcel Map No. 15452, P.M. 212/67 | Parcel Map No. 17518, P.M. 230/39-40 |
| Parcel Map No. 7643, P.M. 82/25 | Parcel Map No. 10221, P.M. 139/15 | Parcel Map No. 16473, P.M. 207/52-53 | Parcel Map No. 17337, P.M. 224/60-61 |
| Parcel Map No. 7801, P.M. 79/87 | Parcel Map No. 11797, P.M. 133/16-17 | Parcel Map No. 16421, P.M. 206/37-38 | |
| Parcel Map No. 6631, P.M. 66/78-79 | Parcel Map No. 11611, P.M. 132/20 | | |
| Parcel Map No. 5004, P.M. 48/55 | Parcel Map No. 11346, P.M. 126/81-82 | | |
| Parcel Map No. 1920, P.M. 16/33 | Parcel Map No. 11328, P.M. 126/52-53 | | |
| Parcel Map No. 498, P.M. 5/52 | | | |

REVISED
05/03/13 RU
10/09/13 GW