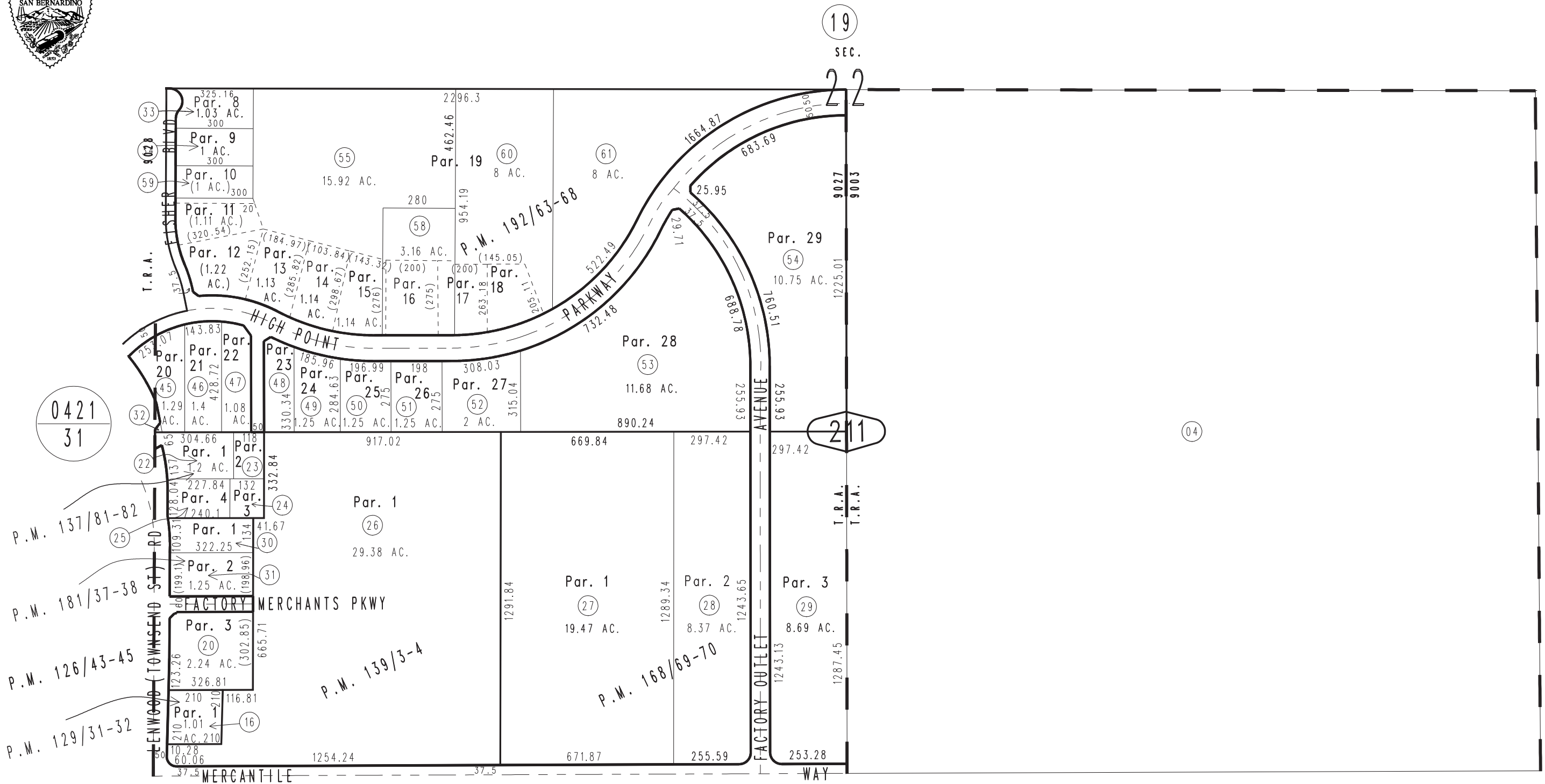
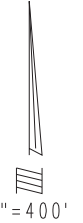


THIS MAP IS FOR THE PURPOSE OF AD VALOREM TAXATION ONLY.

S.1/2 Sec.22, T.9N.,R.2W., S.B.B.&M.

City of Barstow
Tax Rate Area
9003,9027,9028

0428-21



0421
31

211

22

35

17

Parcel Map No. 14869, P.M. 181/37-38
Parcel Map No. 14356, P.M. 168/69-70
Parcel Map No. 11753, P.M. 139/3-4
Parcel Map No. 11974, P.M. 137/81-82
Ptn. Parcel Map No. 11702, P.M. 129/31-32
Ptn. Parcel Map No. 11326, P.M. 126/43-45

Ptn. Parcel Map No. 14462, P.M. 184/100-104 Amending P.M. 192/63-68

Assessor's Map
Book 0428 Page 21
San Bernardino County

REVISED
04/11/24 KA