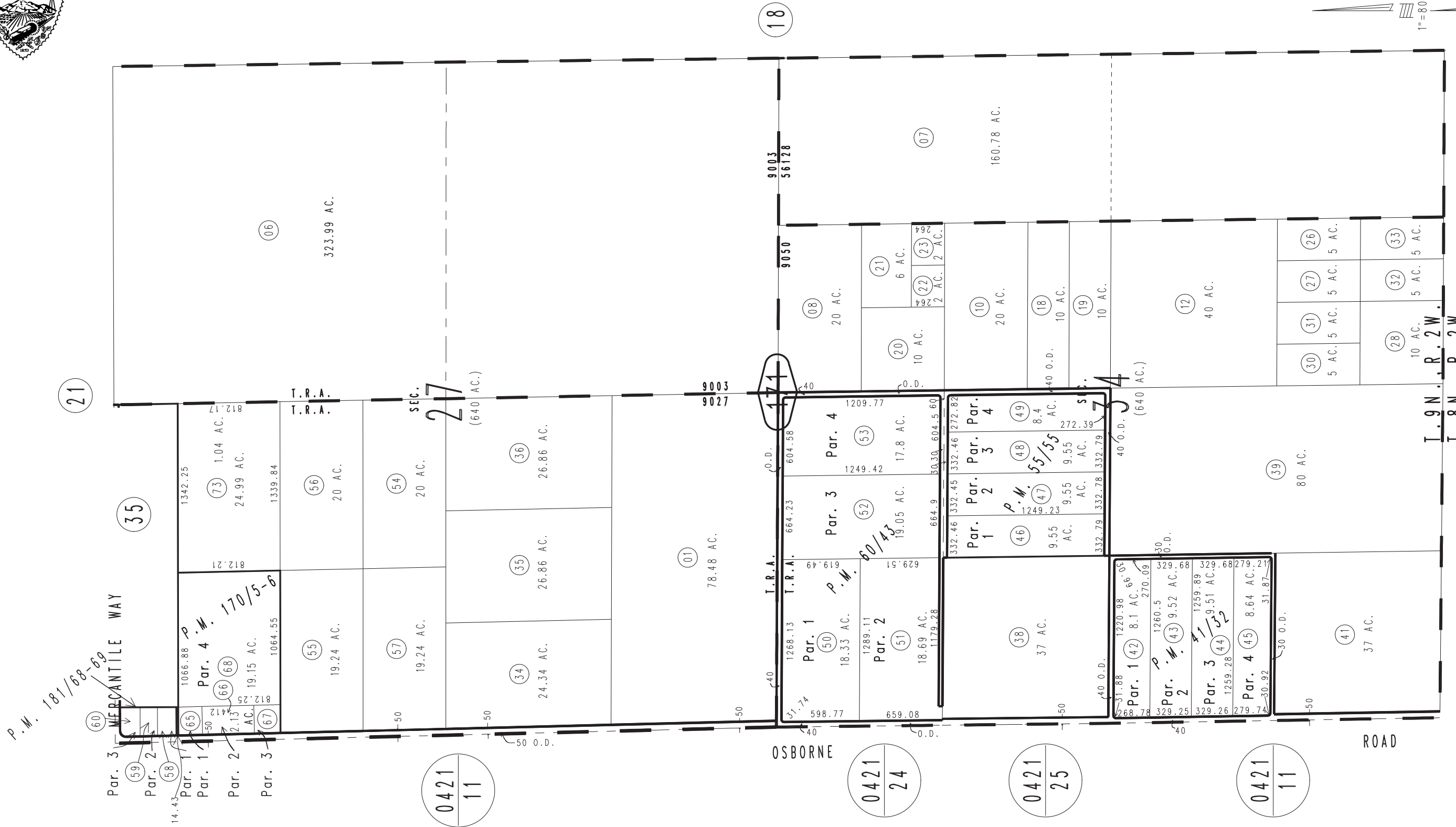
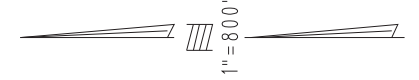


Sec.27&34, T.9N.,R.2W., S.B.B.&M.

City of Barstow  
 Barstow Unified  
 Tax Rate Area  
 9003,9027  
 9050,56128

0428-17

THIS MAP IS FOR THE PURPOSE  
 OF AD VALOREM TAXATION ONLY.



0419  
17

Parcel Map No. 14373, P.M. 170/5-6  
 Ptn. Parcel Map No. 12850, P.M. 145/93-94, Amended Map 181/68-69  
 Parcel Map No. 6465, P.M. 60/43  
 Parcel Map No. 5475, P.M. 55/55  
 Parcel Map No. 4407, P.M. 41/32

February 2004

Assessor's Map  
 Book 0428 Page 17  
 San Bernardino County

REVISED  
 01/23/07 LH  
 02/07/07 LH  
 04/27/07 LH  
 10/02/07 RM