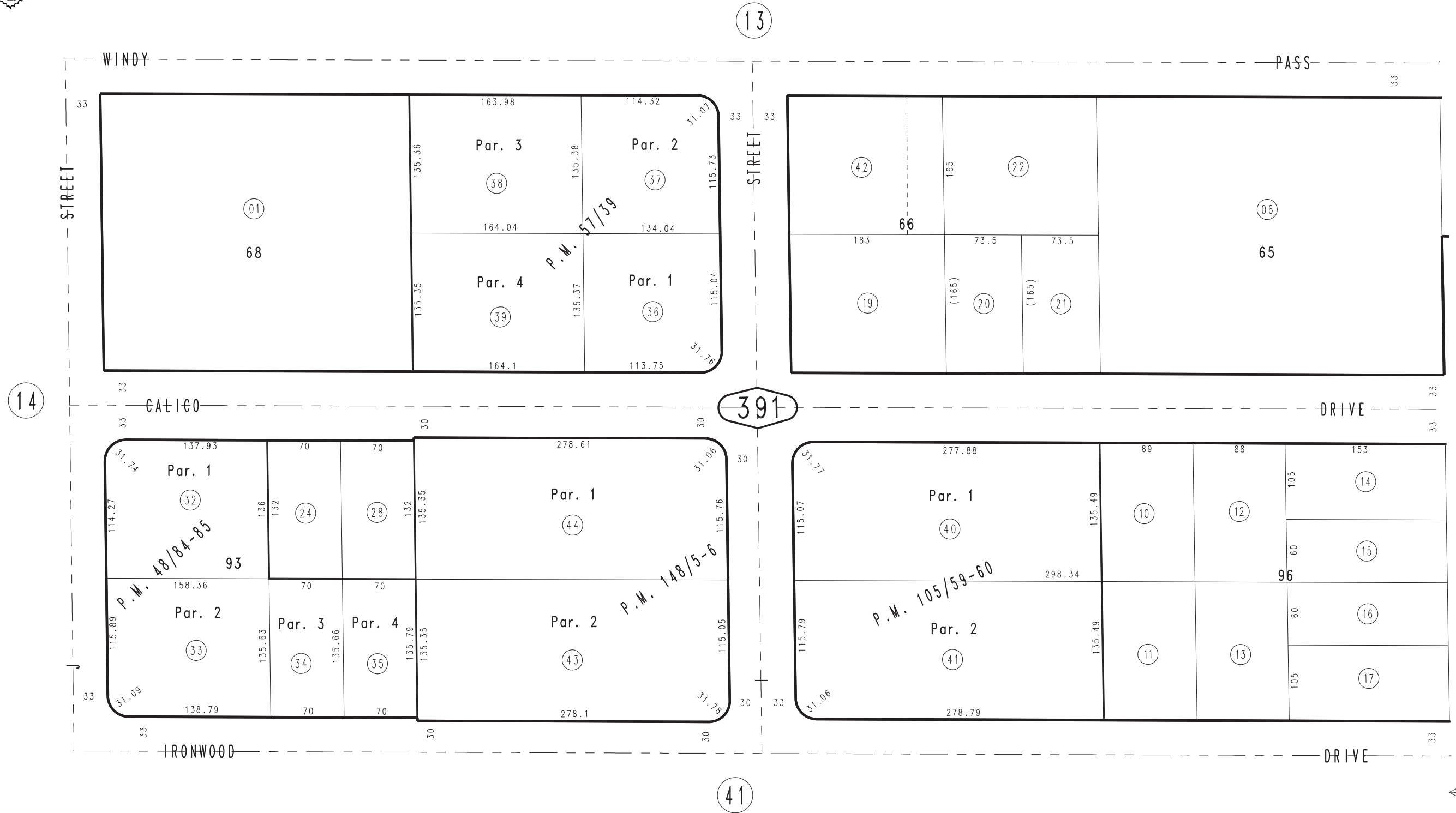


THIS MAP IS FOR THE PURPOSE
OF AD VALOREM TAXATION ONLY.

N.1/2, S.E.1/4, S.E.1/4, Sec.11, T.9N.,R.2W., S.B.B.&M.

Barstow Unified
Tax Rate Area
56005

0427-39



0428
15

S.E. COR. SEC. 11
T. 9N., R. 2W.

REVISED

Parcel Map No. 12515, P.M. 148/5-6
Parcel Map No. 9886, P.M. 105/59-60
Parcel Map No. 4536, P.M. 57/39
Parcel Map No. 5031, P.M. 48/84-85

Assessor's Map
Book 0427 Page 39
San Bernardino County

December 2003