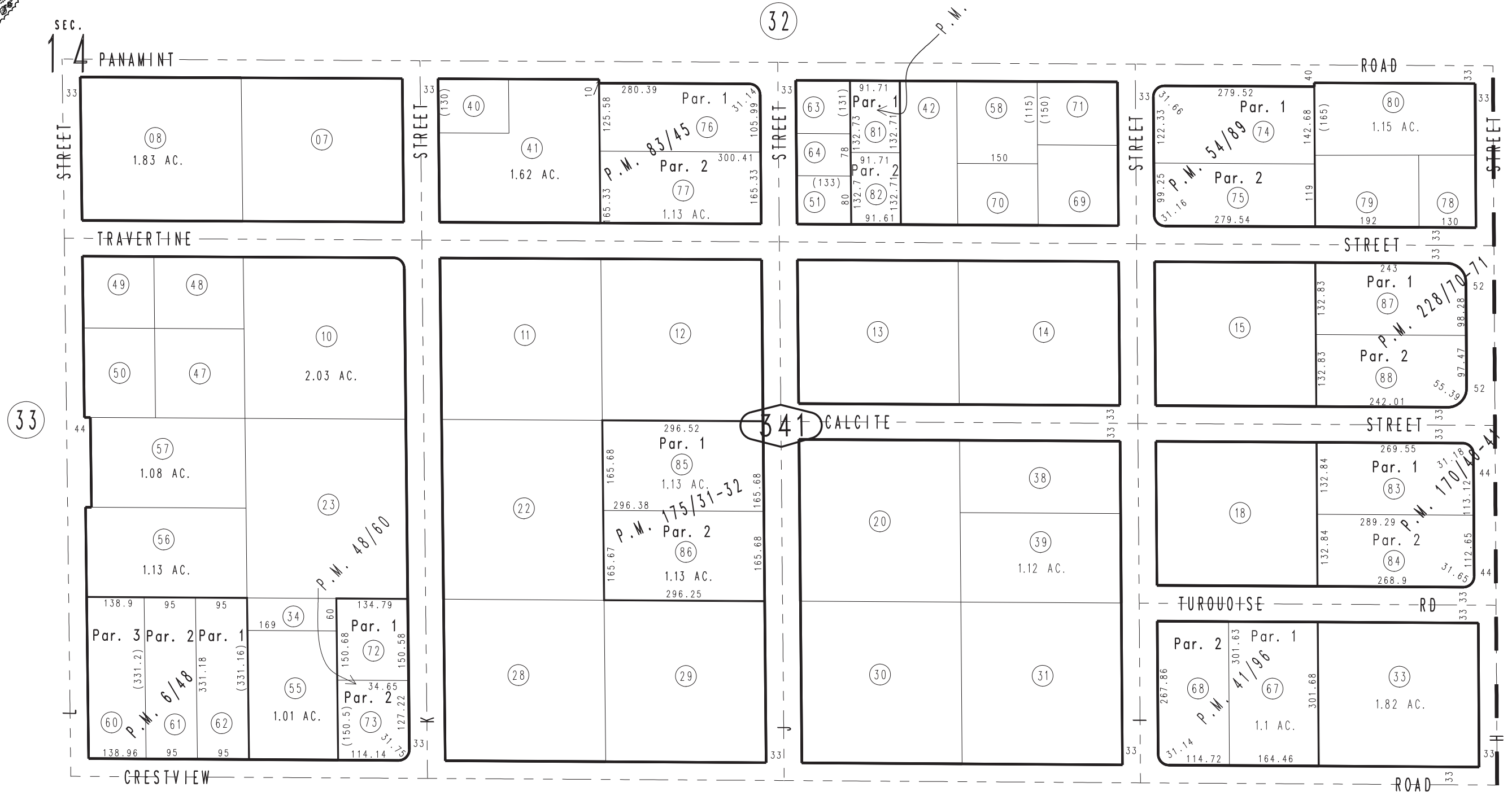


THIS MAP IS FOR THE PURPOSE OF AD VALOREM TAXATION ONLY.

N.1/2, S.E.1/4, Sec.14, T.9N., R.2W., S.B.B.&M.

Barstow Unified
Tax Rate Area
56006

0427-34



0428
02

- Parcel Map No. 14342, P.M. 170/40-41
- Parcel Map No. 13377, P.M. 157/86-87
- Parcel Map No. 6028, P.M. 83/45
- Parcel Map No. 5726, P.M. 54/89
- Parcel Map No. 4825, P.M. 48/60
- Parcel Map No. 4605, P.M. 41/96
- Parcel Map No. 685, P.M. 6/48

- Parcel Map No. 18039, P.M. 228/70-71
- Parcel Map No. 14529, P.M. 175/31-32

Assessor's Map
Book 0427 Page 34
San Bernardino County

REVISED
05/06/14 GW