

THIS MAP IS FOR THE PURPOSE OF AD VALOREM TAXATION ONLY.

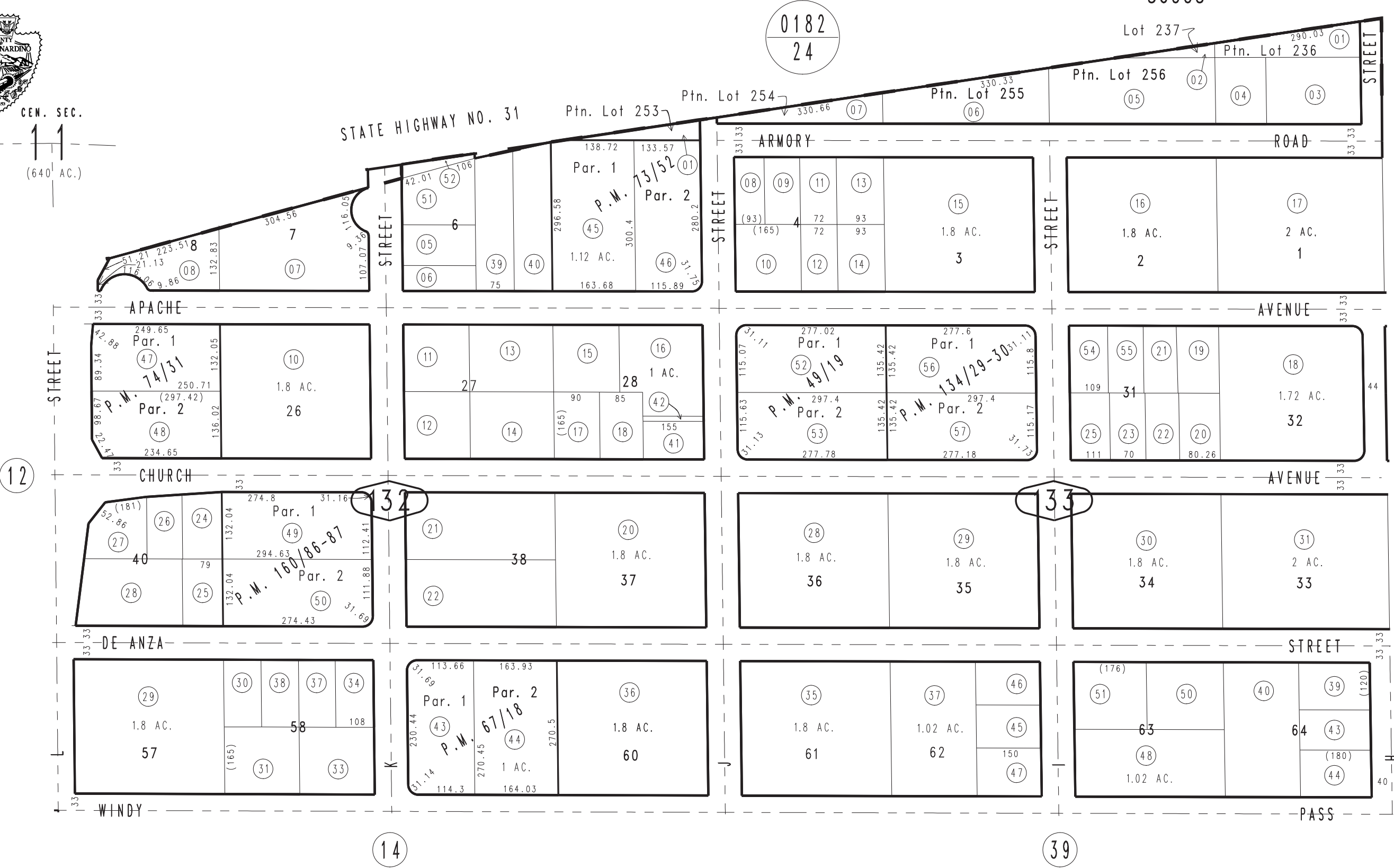
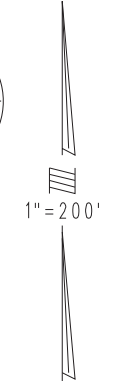
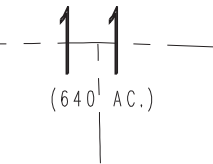
Ptn. of S.1/2, N.E.1/4, N.1/2, S.E.1/4, Sec.11, T.9N.,R.2W., S.B.B.&M. Barstow Unified Tax Rate Area 56005

0427-13



CEN. SEC.

(640' AC.)



- Parcel Map No. 13145, P.M. 160/86-87
- Parcel Map No. 10885, P.M. 134/29-30
- Parcel Map No. 7203, P.M. 74/31
- Parcel Map No. 7202, P.M. 73/52
- Parcel Map No. 6570, P.M. 67/18
- Parcel Map No. 5263, P.M. 49/19

December 2003

Assessor's Map Book 0427 Page 13 San Bernardino County

REVISED 01/15/10 LH 04/19/10 RM