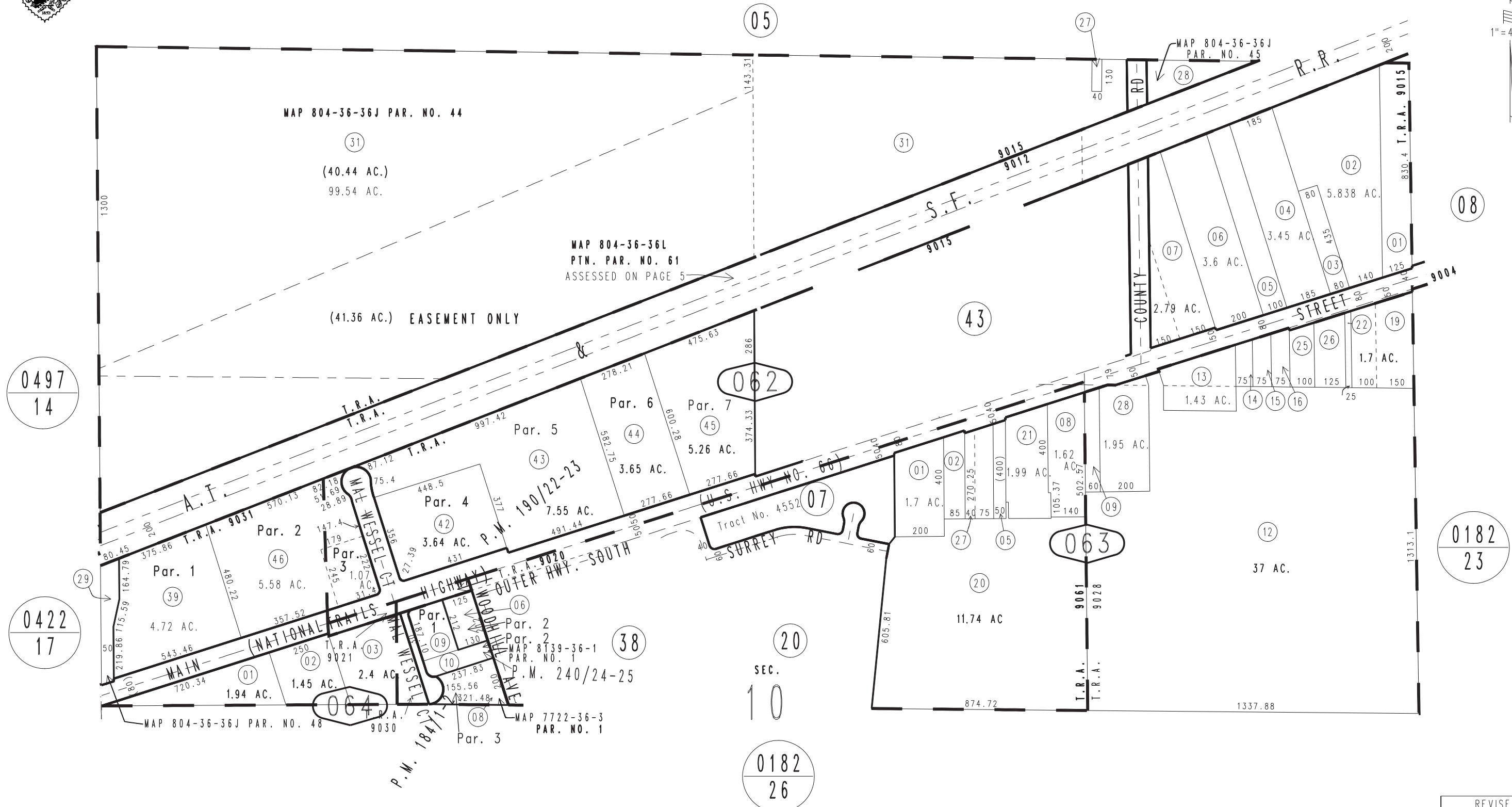


THIS MAP IS FOR THE PURPOSE OF AD VALOREM TAXATION ONLY.

Ptn. N.1/2, Sec.10, T.9N.,R.2W., S.B.B.&M.

City of Barstow  
Barstow Unified  
Tax Rate Area  
9012,9015,9020,9021  
9028,9030,9031,9061

0427-06



0497  
14

0422  
17

20  
10

0182  
26

0182  
23

December 2003

Parcel Map No. 19321, P.M. 240/24-25  
Parcel Map No. 15451, P.M. 190/22-23  
Parcel Map No. 15110, P.M. 184/1-2

Assessor's Map  
Book 0427 Page 06  
San Bernardino County

REVISED  
06/11/21 GW