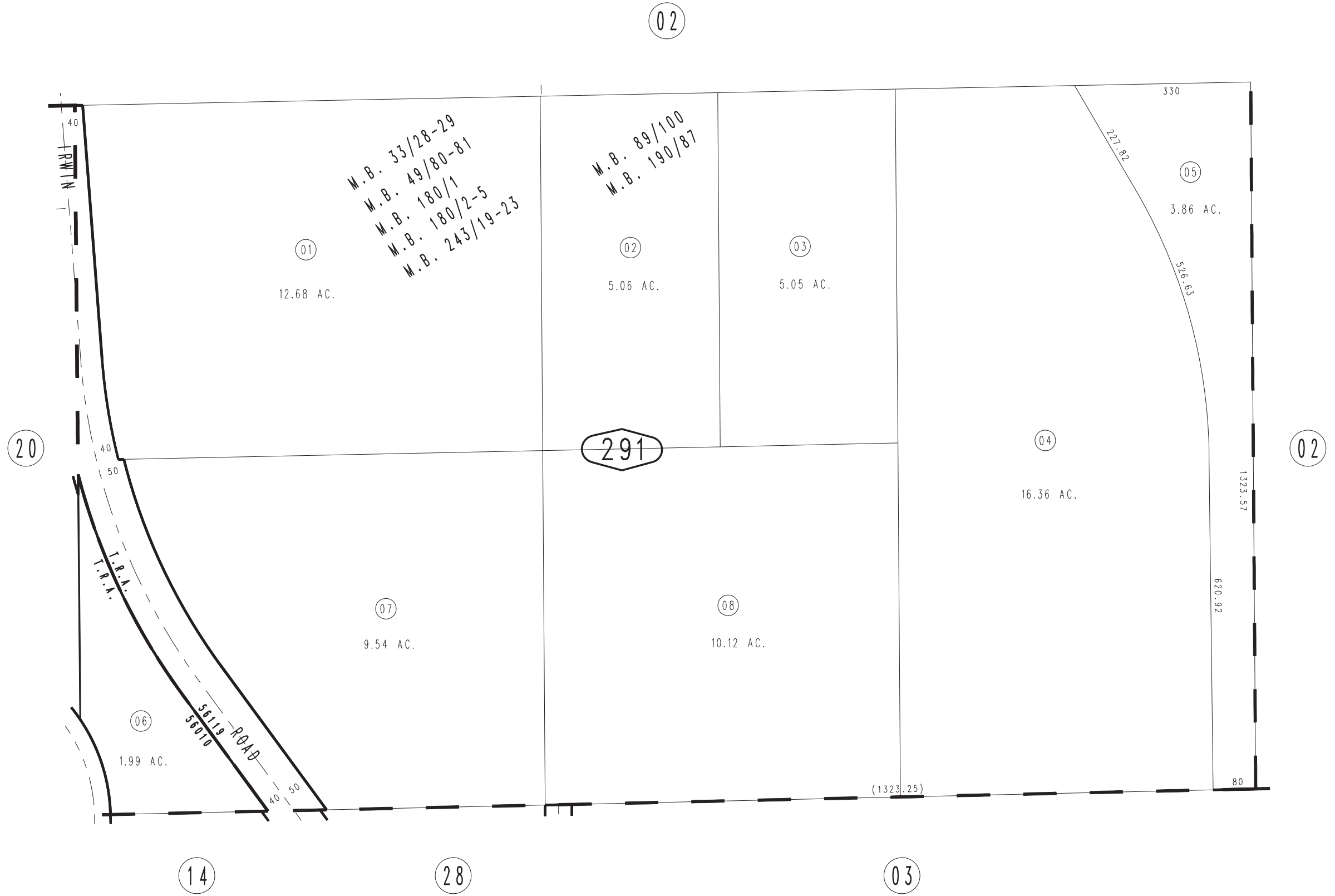


THIS MAP IS FOR THE PURPOSE
OF AD VALOREM TAXATION ONLY.

Ptn. S.1/2,S.1/2 Fractional Sec. 30, T.10N.,R1W., S.B.B.& M.

Barstow Unified
Tax Rate Area
56010,56119

0426-29



Tract No. 13064, M.B. 180/1 Cemetery
 Tract No. 6502, M.B. 89/100 Cemetery
 Tract No. 3668, M.B. 49/80-81 Cemetery
 Tract No. 2268, M.B. 33/28-29 Cemetery

Tract No. 15336, M.B. 243/19-23 Cemetery
 Tract No. 13293, M.B. 190/87 Cemetery
 Tract No. 13065, M.B. 180/2-5 Cemetery

Assessor's Map
 Book 0426 Page 29
 San Bernardino County