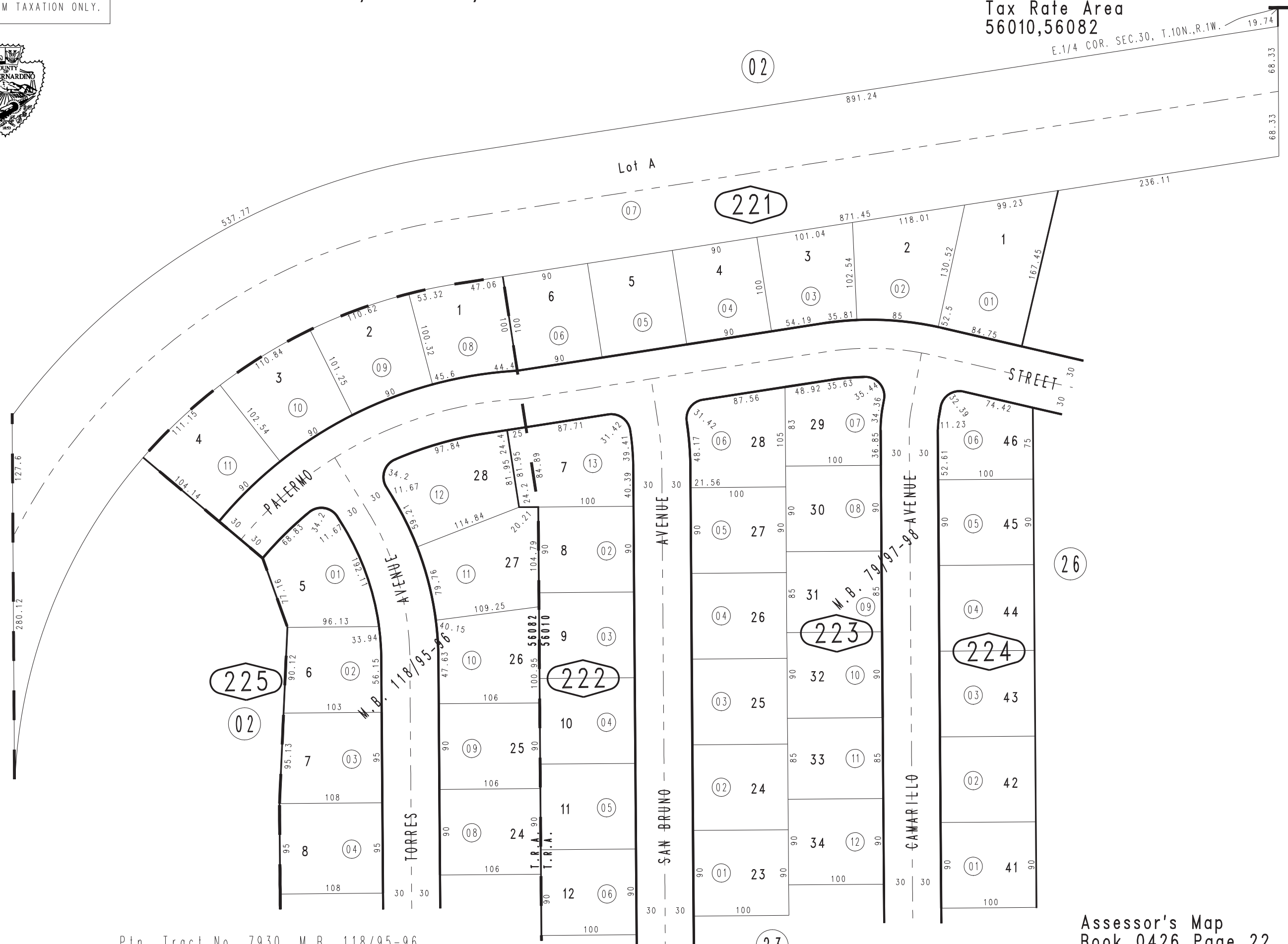


THIS MAP IS FOR THE PURPOSE OF AD VALOREM TAXATION ONLY.

Ptn. E.1/2 S.E.1/4 Sec.30, T.10N.,R.1W., S.B.B.&M.

Barstow Unified Tax Rate Area 56010,56082

0426-22



Ptn. Tract No. 7930, M.B. 118/95-96
Ptn. Tract No. 4280, M.B. 79/97-98

January 2004

Assessor's Map
Book 0426 Page 22
San Bernardino County

REVISED
03/31/09 TY
11/15/10 LH-MC