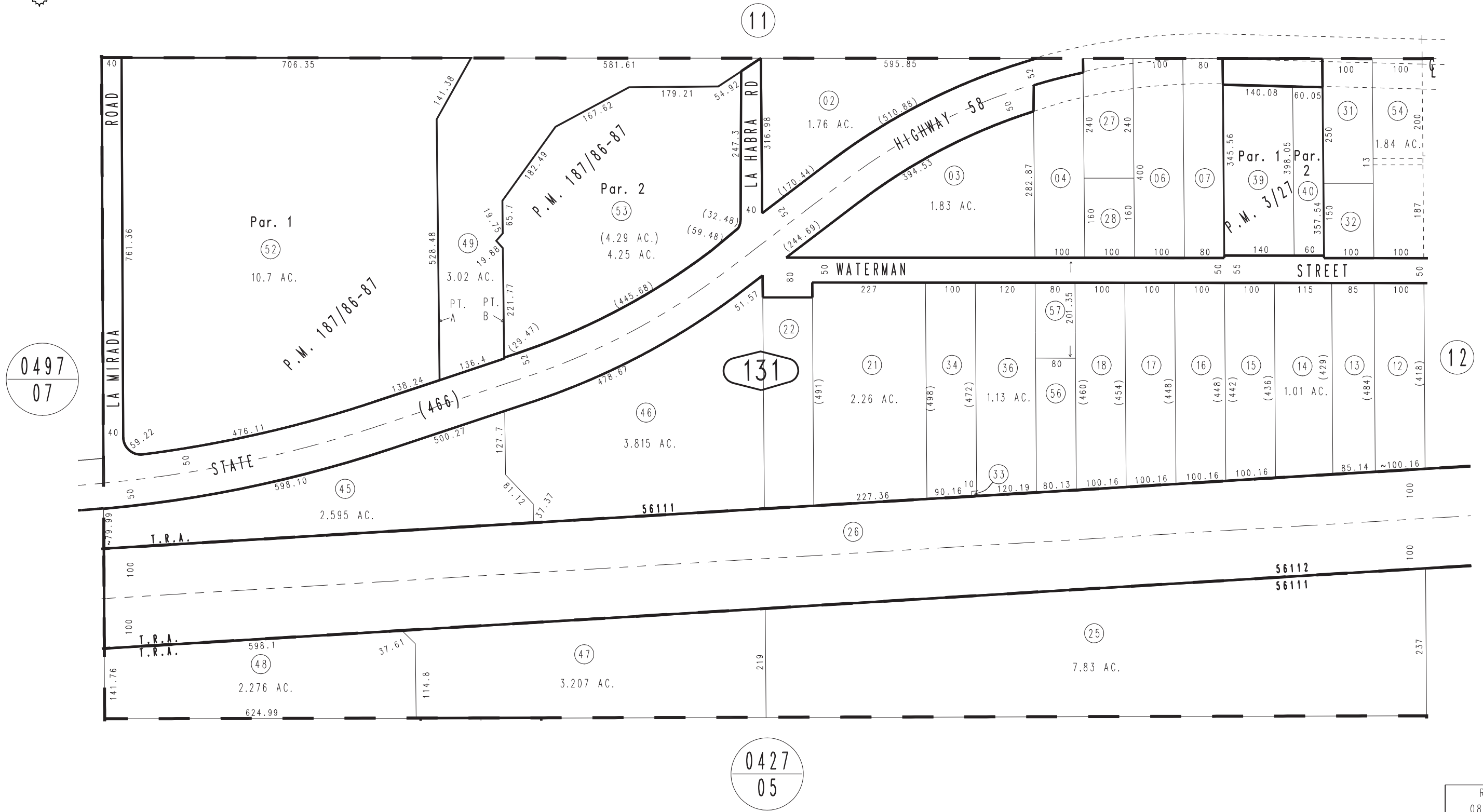


THIS MAP IS FOR THE PURPOSE
OF AD VALOREM TAXATION ONLY.

S.1/2 S.W.1/4 Sec.35, T.10N.,R.2W., S.B.B.&M.

Barstow Unified
Tax Rate Area
56111,56112

0426-13



0497
07

131

0427
05

January 2004

Parcel Map No. 14820, P.M. 187/86-87
Parcel Map No. 209, P.M. 3/27

Assessor's Map
Book 0426 Page 13
San Bernardino County

REVISED
08/01/22 KC
07/10/23 KC