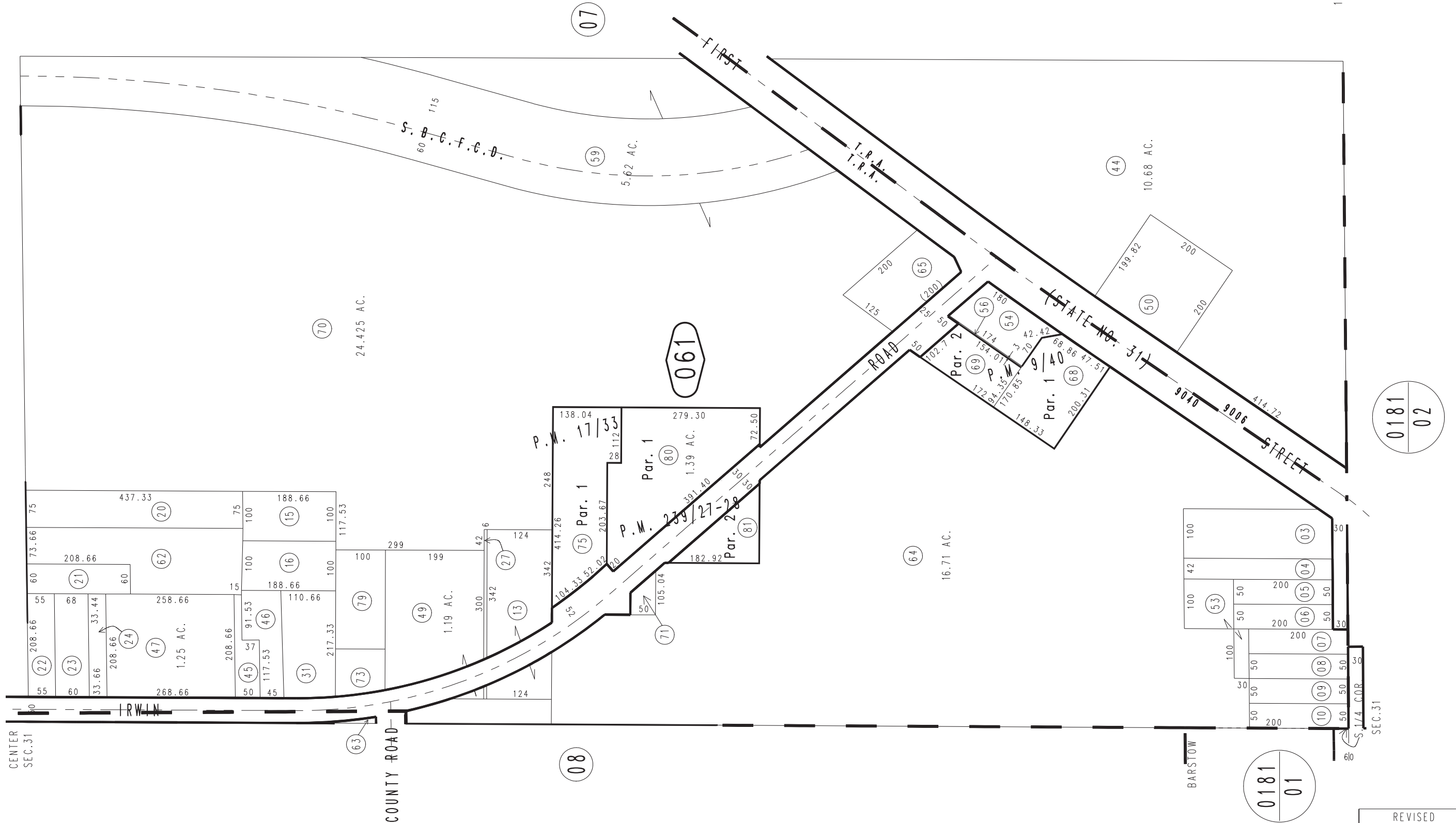


THIS MAP IS FOR THE PURPOSE
OF AD VALOREM TAXATION ONLY.

W.1/2, S.E.1/4 Sec.31, T.10N.,R.1W., S.B.B.&M.

City of Barstow
Tax Rate Area
9006,9040

0426-06



January 2004

Parcel Map No. 19287, P.M. 239/27-28
Ptn. Parcel Map No. 1866, P.M. 17/33
Parcel Map No. 980, P.M. 9/40

Assessor's Map
Book 0426 Page 06
San Bernardino County

REVISED
07/12/21 GW