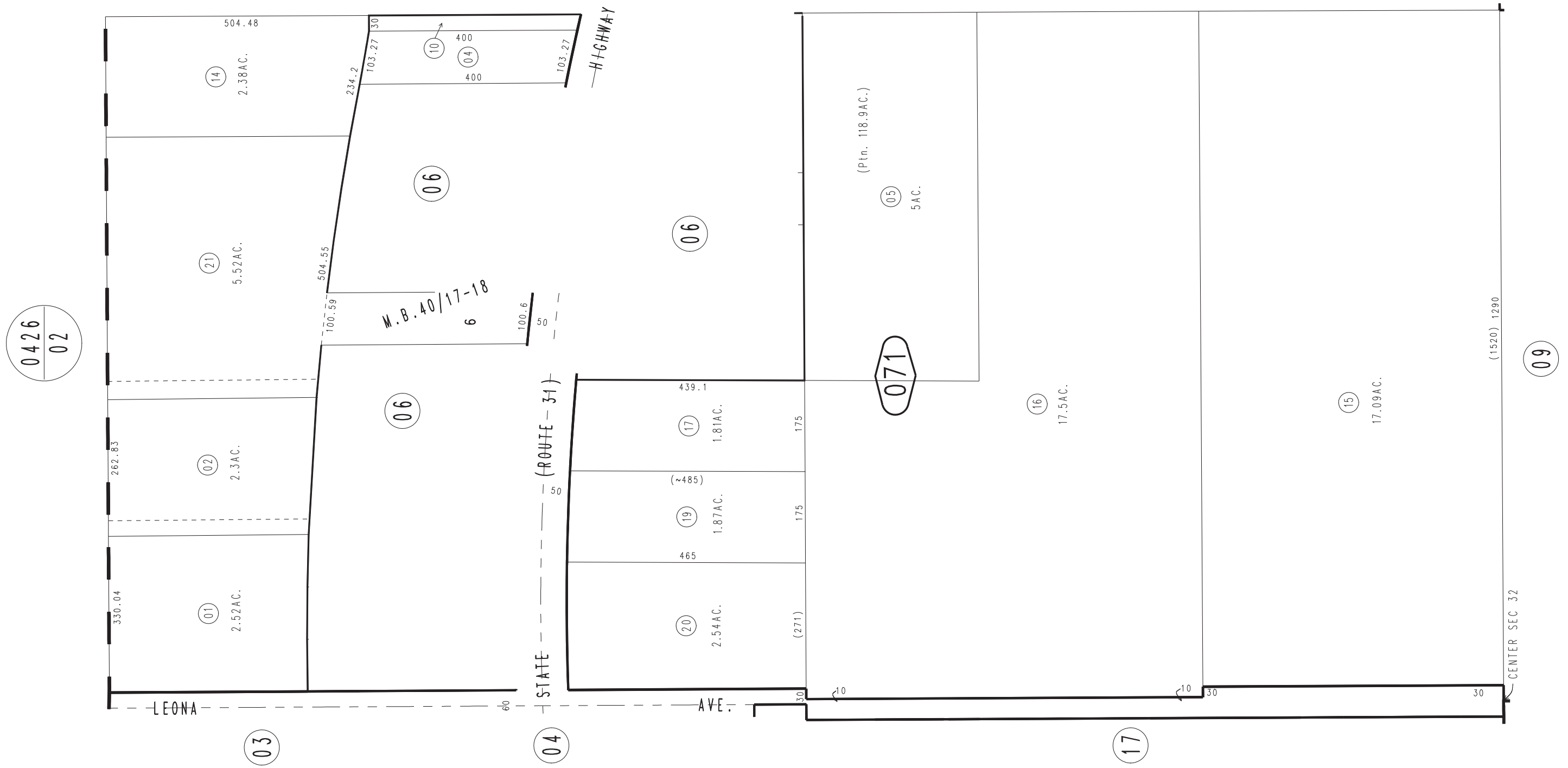


THIS MAP IS FOR THE PURPOSE
OF AD VALOREM TAXATION ONLY.

Ptn. N.E.1/4, Sec.32, T.10N.,R.1W., S.B.B.&M.

Barstow Unified
Tax Rate Area
56114

0425-07



Ptn. Tract No.2893, M.B.40/17-18

October 2003

Assessor's Map
Book 0425 Page 07
San Bernardino County

REVISED
03/23/09 GL