

THIS MAP IS FOR THE PURPOSE OF AD VALOREM TAXATION ONLY.

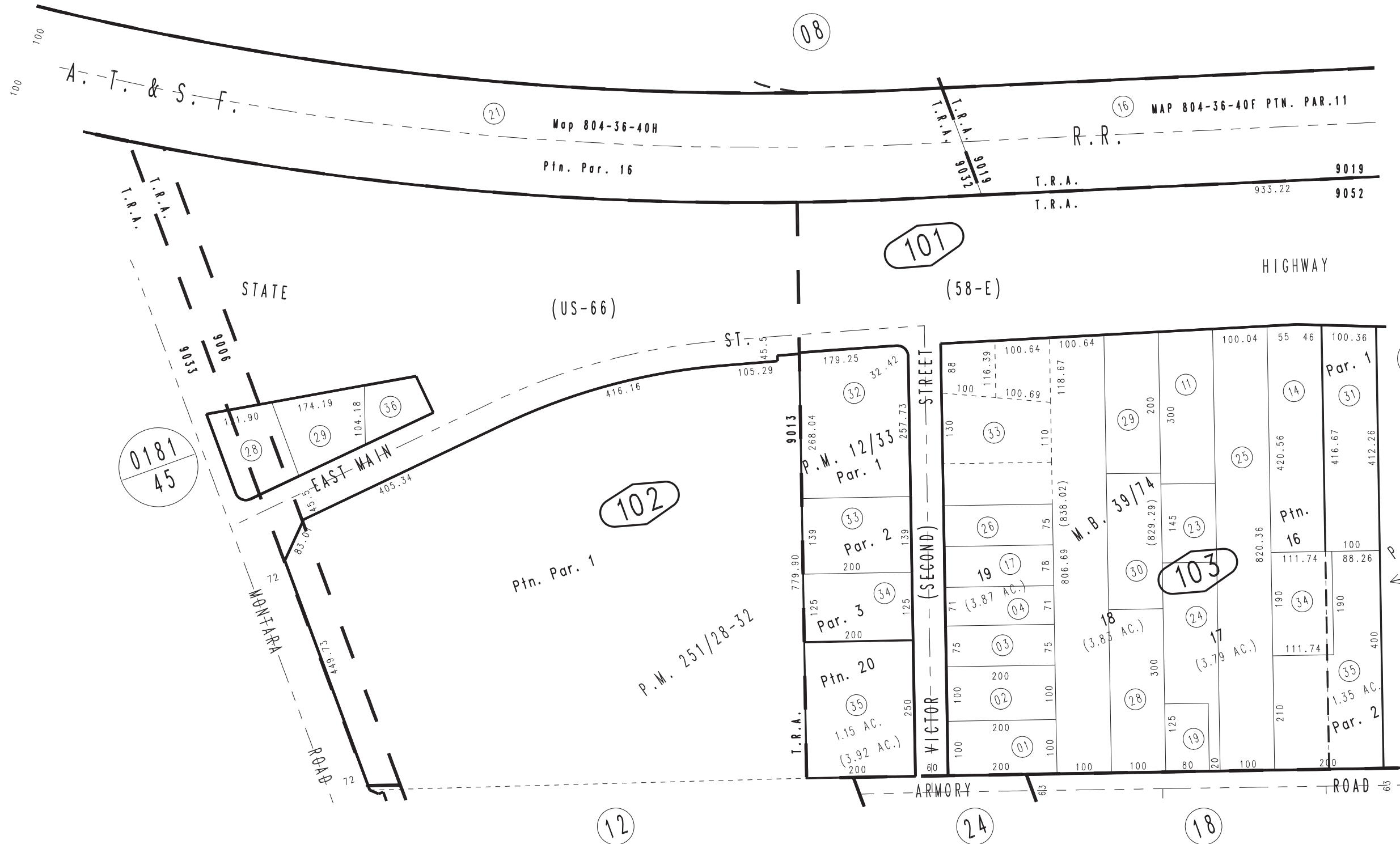


Ptn. Sec.9, T.9N.,R.1W., S.B.B.&M.
Ptn. East Barstow Highway Tr., Tract No. 2876, M.B.39/74

City of Barstow
Tax Rate Area
9006,9013,9019
9032,9033,9052

0424-10

1"=200'



Ptn. Parcel Map No. 19189, P.M. 251/28-32
Parcel Map No. 3077, P.M. 27/93
Parcel Map No. 1420, P.M. 12/33

July. 2003

Assessor's Map
Book 0424 Page 10
San Bernardino County

REVISED
12/26/18 KA
01/09/19 KA
03/30/22 RU