

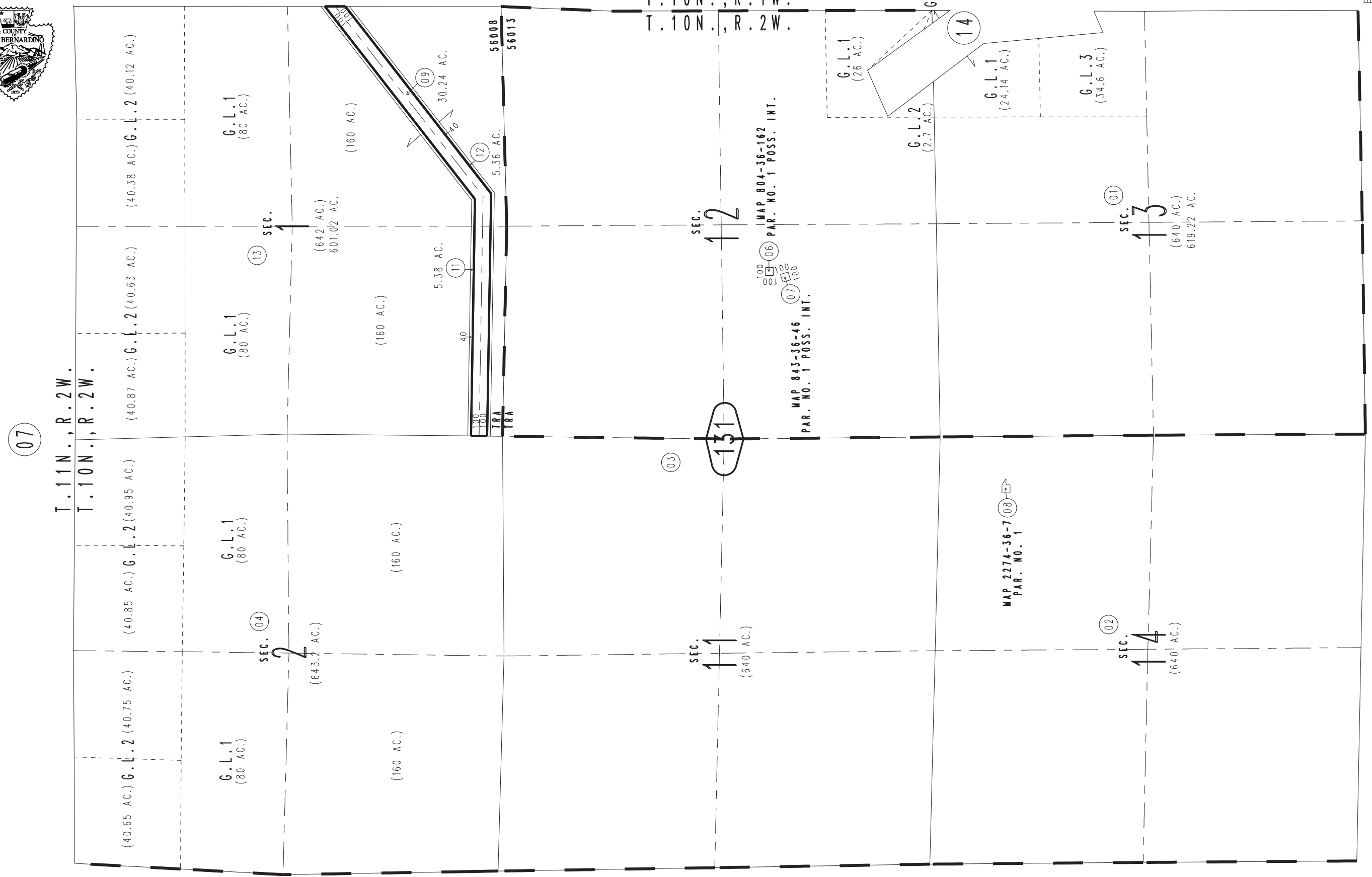
THIS MAP IS FOR THE PURPOSE OF AD VALOREM TAXATION ONLY.



Fractional Sec.1&2, & Sec.11,12,13,&14, T.10N.,R.2W., S.B.B.&M.

Barstow Unified 0423-13
Tax Rate Area
56008,56013

1"=1200'



June 2005

0489
05

Assessor's Map
Book 0423 Page 13
San Bernardino County

REVISED
06/01/10 GL-MC