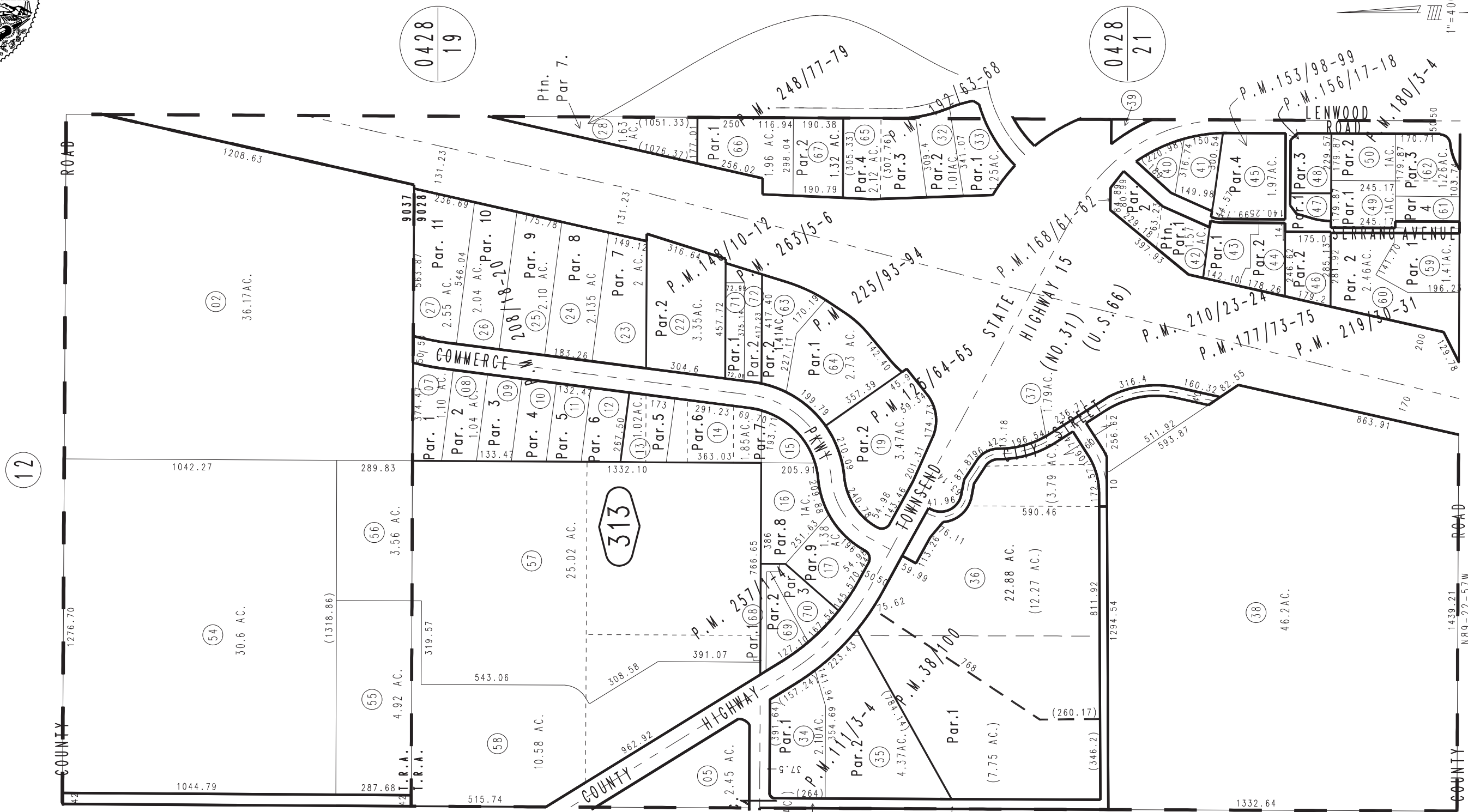
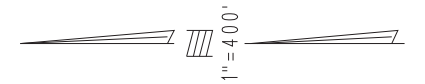


THIS MAP IS FOR THE PURPOSE
OF AD VALOREM TAXATION ONLY.

E.1/2 Sec.21, T.9N.,R.2W., S.B.B.&M.

City Of Barstow
Tax Rate Area
9028 9037

0421 - 31



Parcel Map No. 14561, P.M. 177/73-75
Parcel Map No. 14364, P.M. 168/61-62
Ptn. Parcel Map No. 13757, P.M. 156/17-18
Ptn. Parcel Map No. 13328, P.M. 153/98-99
Ptn. Parcel Map No. 13110, P.M. 148/10-12
Ptn. Parcel Map No. 11308, P.M. 125/64-65
Parcel Map No. 10424, P.M. 111/3-4
Ptn. Parcel Map No. 4351, P.M. 38/100

Parcel Map No. 18090, P.M. 219/30-31
Parcel Map No. 17245, P.M. 210/23-24
Parcel Map No. 16329, P.M. 208-18-20
Ptn. Parcel Map No. 14462, P.M. 184/100-104,
Amending P.M. 192/63-68
Parcel Map No. 14900, P.M. 180/3-4

Parcel Map No. 20671, P.M. 263/5-6
Parcel Map No. 20306, P.M. 357/1-4
Parcel Map No. 19876, P.M. 248/77-79
Parcel Map No. 18380, P.M. 225/93-94

Assessor's Map
Book 0421 Page 31
San Bernardino County

REVISED
03/12/24 KA
06/25/24 KA