

THIS MAP IS FOR THE PURPOSE OF AD VALOREM TAXATION ONLY.

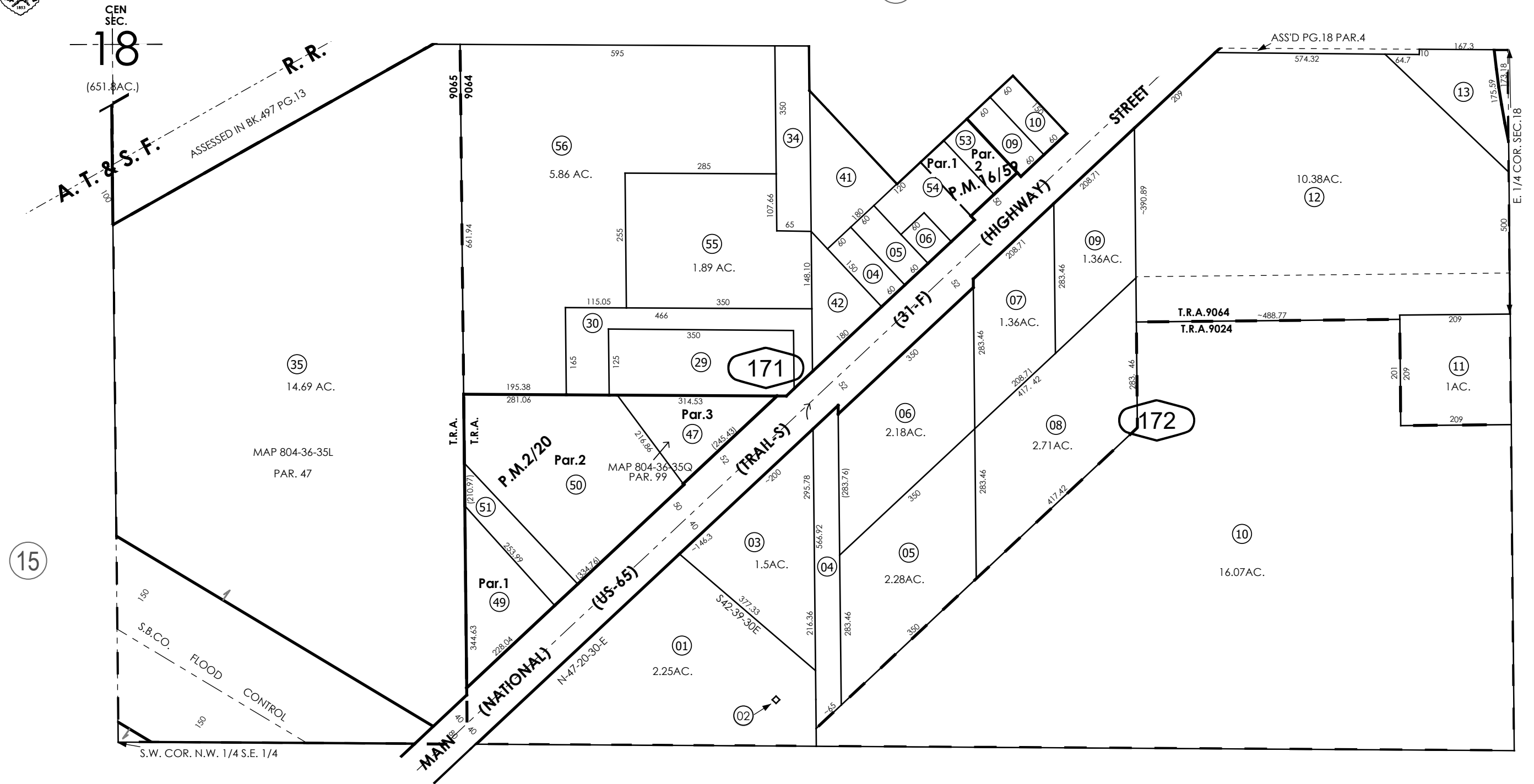
Ptn. N.1/2 S.E.1/4 Fractional Sec.18, T.9N.,R.2W., S.B.B.&M.

Barstow Unified Tax Rate Area 9024 9064 9065

0421 - 17



0497  
13



Parcel Map No.1924,P.M.16/59  
Parcel Map No.170,P.M.2/20

Assessor's Map  
Book 0421 Page 17  
San Bernardino County

REVISED  
03/25/25 XM