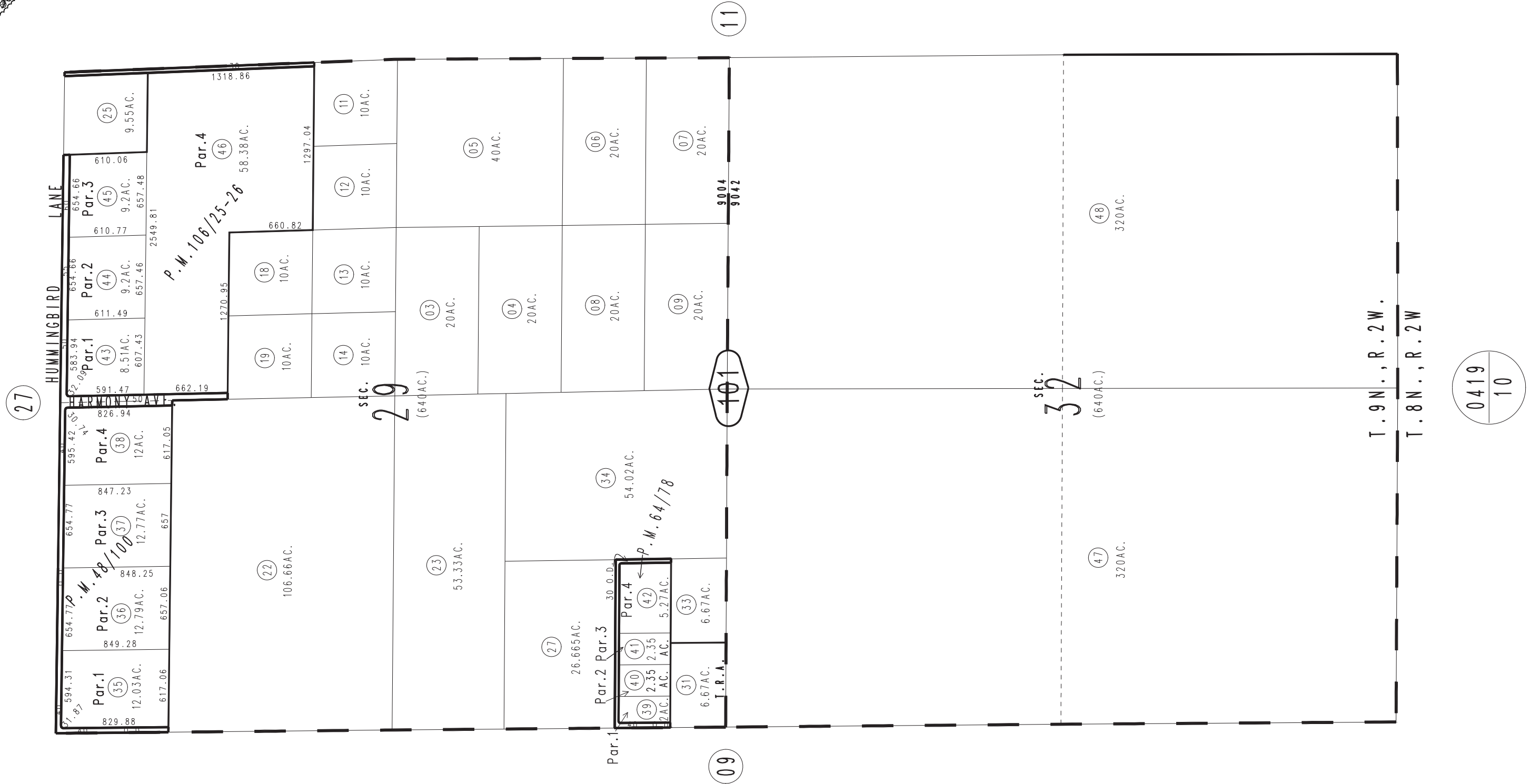
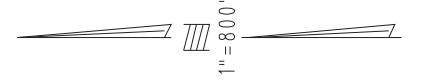


THIS MAP IS FOR THE PURPOSE OF AD VALOREM TAXATION ONLY.

Sec.29 & 32, T.9N.,R.2W., S.B.B.&M.

City Of Barstow
Tax Rate Area
9004 9042

0421 - 10



October 2003

Parcel Map No.9682,P.M.106/25-26
Parcel Map No.6678,P.M.64/78
Parcel Map No.5294,P.M.48/100

Assessor's Map
Book 0421 Page 10
San Bernardino County

REVISED

0419
10