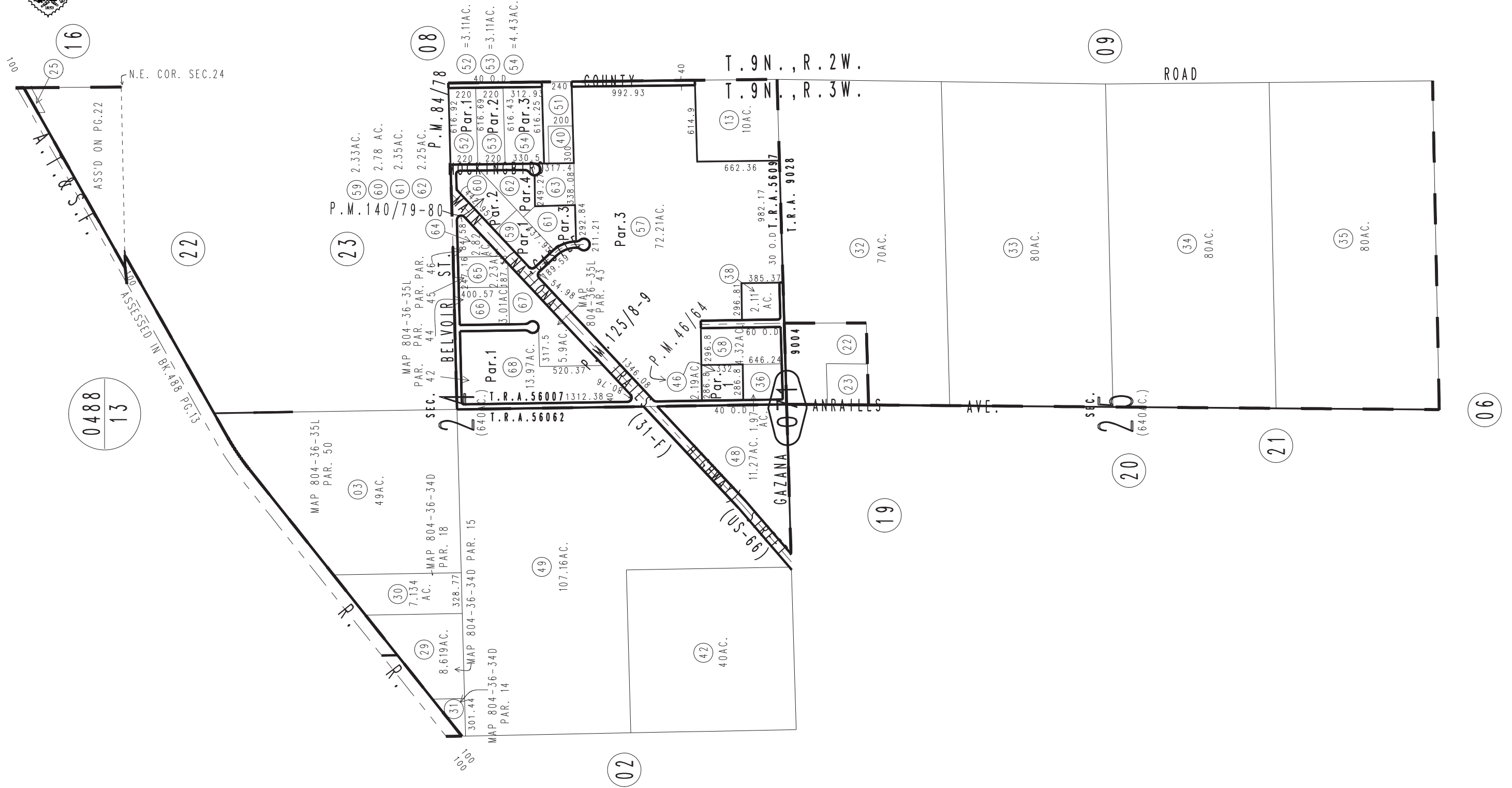
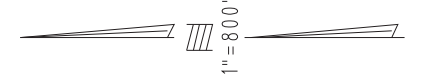


THIS MAP IS FOR THE PURPOSE
OF AD VALOREM TAXATION ONLY.

Ptn. Sec.13 & 24, & Sec.25, T.9N.,R.3W., S.B.B.&M.

City Of Barstow
Barstow Unified
Tax Rate Area
9004 9028 56062 56097

0421-07



October 2003

Parcel Map No.11842,P.M.140/79-80
Ptn.Parcel Map No.11089,P.M.125/8-9
Parcel Map No.8044,P.M.84/78
Parcel Map No.4951, P.M.46/64

Assessor's Map
Book 0421 Page 07
San Bernardino County

REVISED
12/05/19 GW
06/12/20 GW