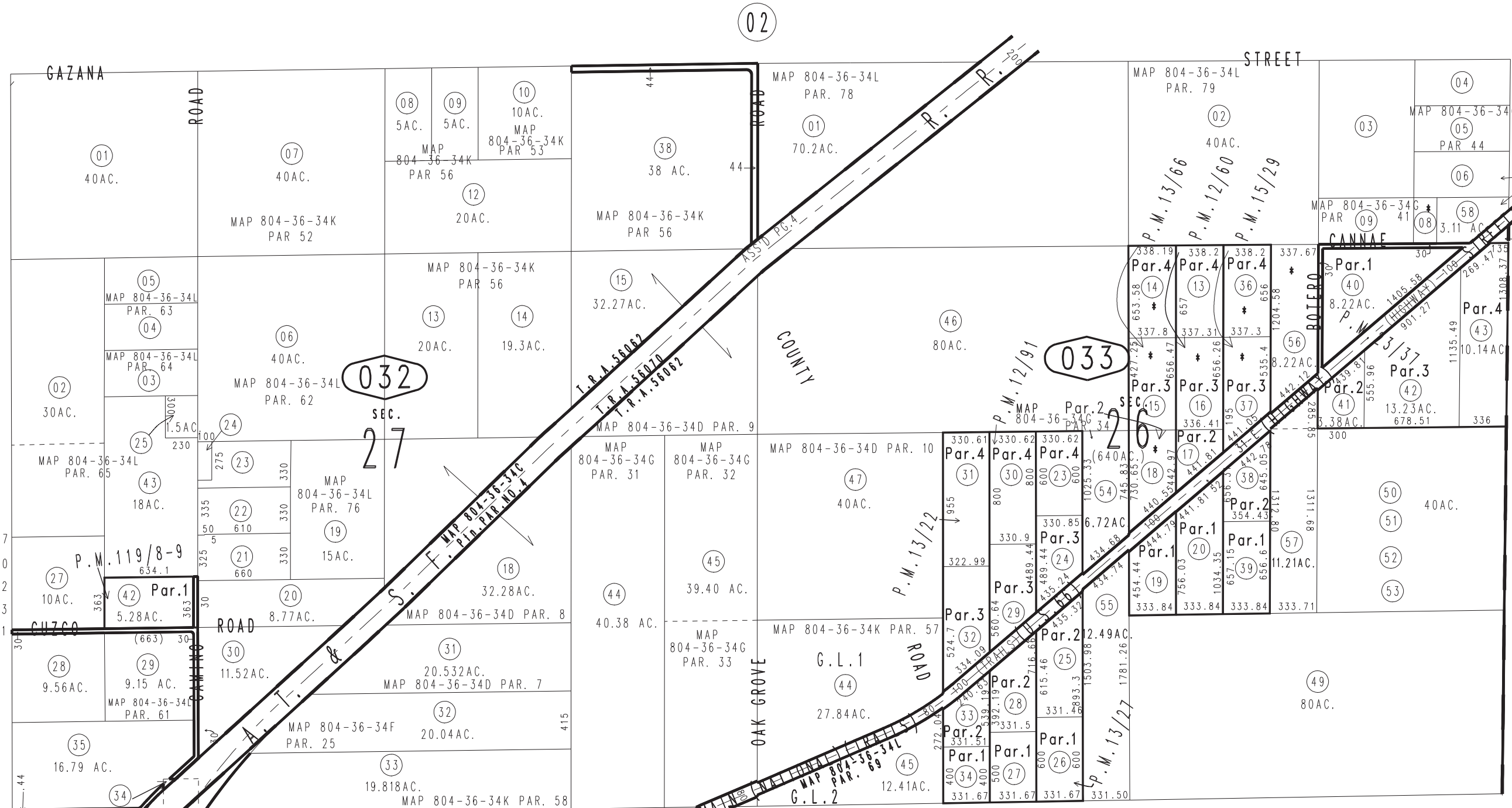


THIS MAP IS FOR THE PURPOSE OF AD VALOREM TAXATION ONLY.

Sec.26 & 27, T.9N.,R.3W., S.B.B.&M.

Barstow Unified
Tax Rate Area
56062 56070

0421 - 03



0420
08

- * SBE-UTILITY MAPS
- (23) MAP 804-36-34L PAR. 67
- (21) MAP 804-36-34L PAR. 70
- (42) MAP 804-36-34L PAR. 72
- (27) MAP 804-36-34L PAR. 73
- (20) MAP 804-36-34L PAR. 81

- Parcel Map No. 1303, P.M.13/66
- Parcel Map No. 1304, P.M.13/27
- Parcel Map No. 1301, P.M.13/22
- Parcel Map No. 1305, P.M.12/91
- Parcel Map No. 1300, P.M.12/60
- Parcel Map No. 10679, P.M.119/8-9
- Parcel Map No. 2587, P.M.23/37
- Parcel Map No. 1302, P.M.15/29

- * SBE-UTILITY MAPS
- (08) MAP 804-36-34G PAR 42
- (14) MAP 804-36-34G PAR 37
- (15) MAP 804-36-34G PAR 36
- (16) MAP 804-36-34G PAR 38
- (18) MAP 804-36-34G PAR 35
- (36) (37) MAP 804-36-34G PAR 39
- (56) MAP 804-36-34G PAR 40
- (06) * SBE-UTILITY MAPS
- (29) (30) MAP 804-36-34L PAR. 77

Assessor's Map
Book 0421 Page 03
San Bernardino County

REVISED
07/31/23 GW
09/08/23 GW
06/04/24 KA